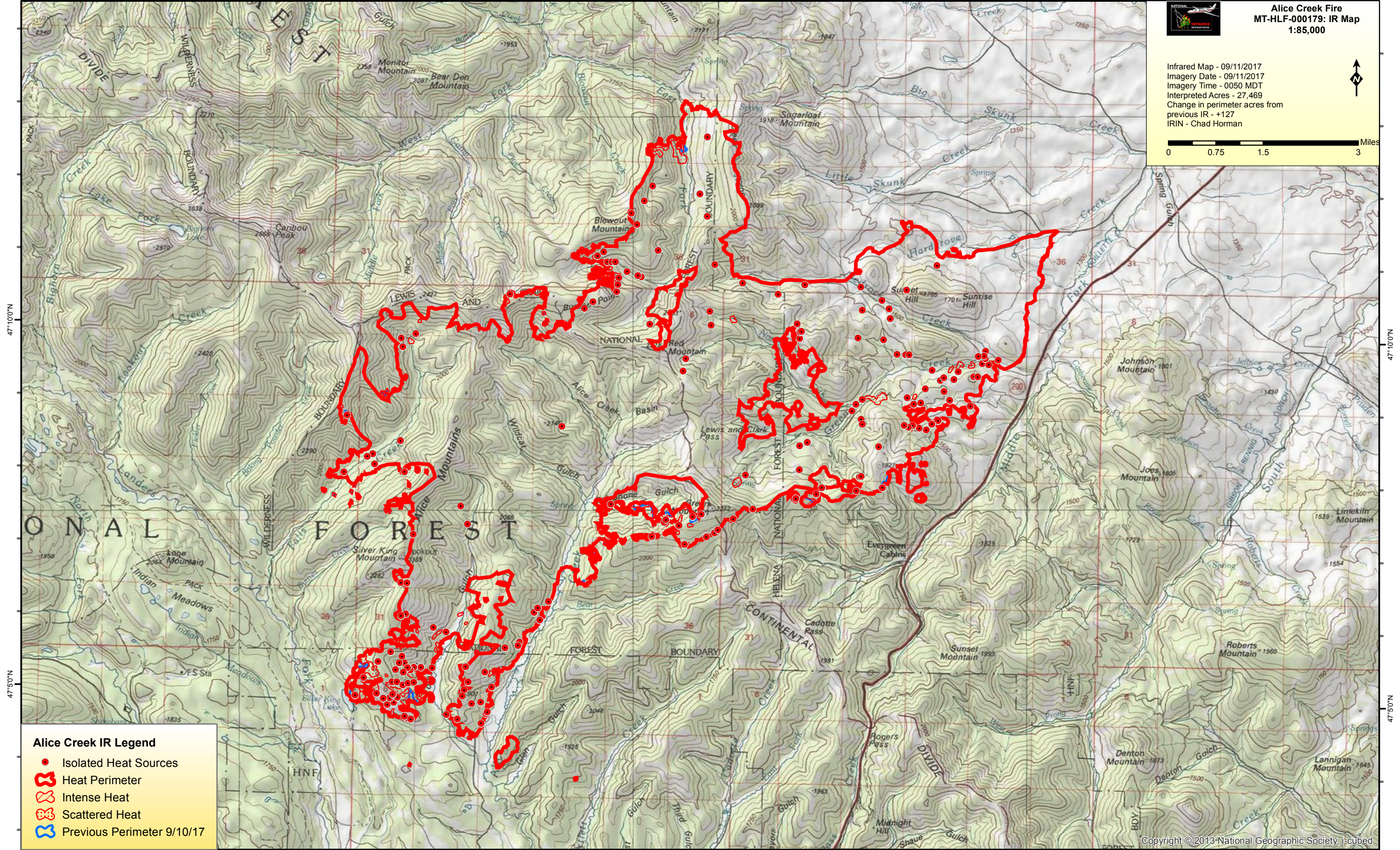
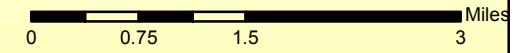


112°35'0"W 112°30'0"W 112°25'0"W 112°20'0"W 112°15'0"W



**Alice Creek Fire**  
MT-HLF-000179: IR Map  
1:85,000

Infrared Map - 09/11/2017  
Imagery Date - 09/11/2017  
Imagery Time - 0050 MDT  
Interpreted Acres - 27,469  
Change in perimeter acres from  
previous IR - +127  
IRIN - Chad Horman



47°0'0"N

47°5'0"N

47°10'0"N

47°5'0"N

**Alice Creek IR Legend**

- Isolated Heat Sources
- Heat Perimeter
- Intense Heat
- Scattered Heat
- Previous Perimeter 9/10/17

112°35'0"W 112°30'0"W 112°25'0"W 112°20'0"W 112°15'0"W