

112°35'0"W

112°30'0"W

112°25'0"W

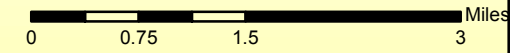
112°20'0"W

112°15'0"W



### Alice Creek Fire MT-HLF-000179: IR Map 1:85,000

Infrared Map - 09/12/2017  
Imagery Date - 09/11/2017  
Imagery Time - 2349 MDT  
Interpreted Acres - 27,982  
Change in perimeter acres from  
previous IR - +513  
IRIN - Chad Horman  
UTM NAD83 Zone 12



47°10'0"N

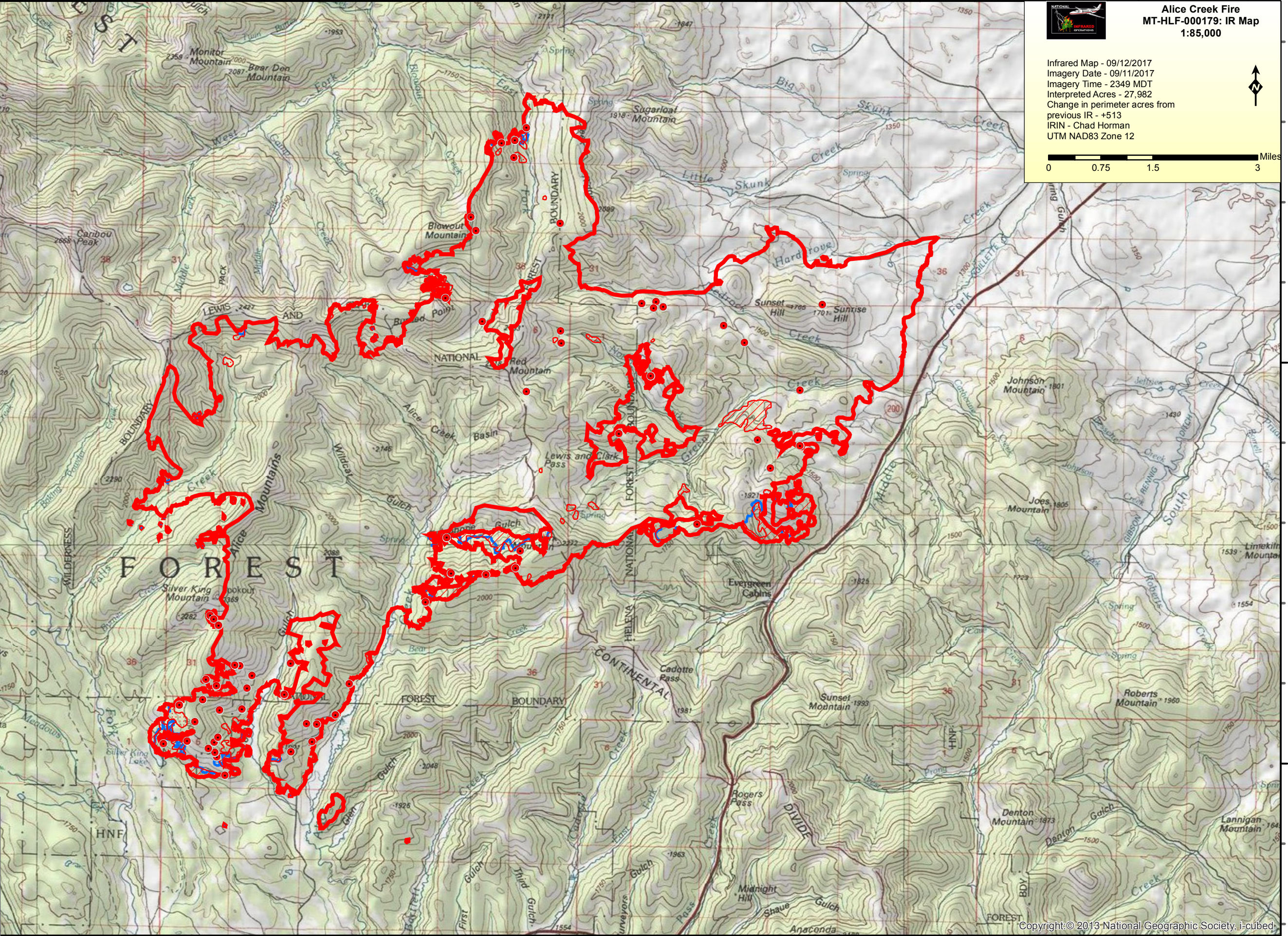
47°10'0"N

47°50'N

47°50'N

**Alice Creek IR Legend**

- Isolated Heat Sources
- Heat Perimeter
- Intense Heat
- Scattered Heat
- Previous Perimeter 9/11/17



112°35'0"W

112°30'0"W

112°25'0"W

112°20'0"W

112°15'0"W