

112°49'0"W 112°48'30"W 112°48'0"W 112°47'30"W 112°47'0"W 112°46'30"W 112°46'0"W 112°45'30"W 112°45'0"W 112°44'30"W 112°44'0"W 112°43'30"W 112°43'0"W 112°42'30"W



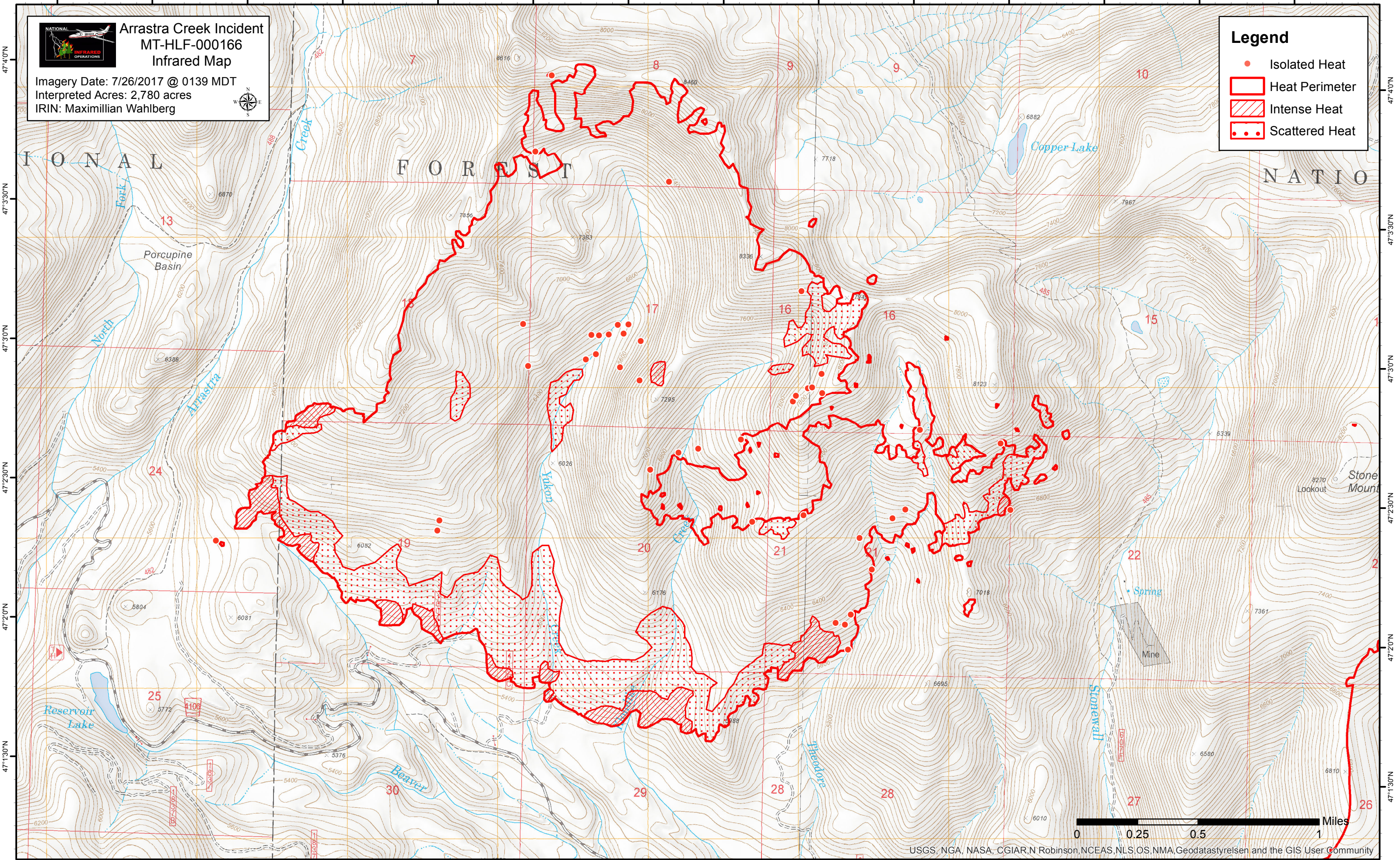
Arastra Creek Incident MT-HLF-000166 Infrared Map

Imagery Date: 7/26/2017 @ 0139 MDT
Interpreted Acres: 2,780 acres
IRIN: Maximillian Wahlberg



Legend

- Isolated Heat
- Heat Perimeter
- ▨ Intense Heat
- Scattered Heat



USGS, NGA, NASA, CGIAR, N Robinson, NCEAS, NLS, OS, NMA, Geodatastyrelsen and the GIS User Community

112°49'0"W 112°48'30"W 112°48'0"W 112°47'30"W 112°47'0"W 112°46'30"W 112°46'0"W 112°45'30"W 112°45'0"W 112°44'30"W 112°44'0"W 112°43'30"W 112°43'0"W 112°42'30"W