

112°49'0"W 112°48'30"W 112°48'0"W 112°47'30"W 112°47'0"W 112°46'30"W 112°46'0"W 112°45'30"W 112°45'0"W 112°44'30"W 112°44'0"W 112°43'30"W 112°43'0"W 112°42'30"W



Arrastra Creek Incident MT-HLF-000166 Infrared Map

Imagery Date: 7/26/2017 @ 0139 MDT
Interpreted Acres: 2,780 acres
IRIN: Maximillian Wahlberg

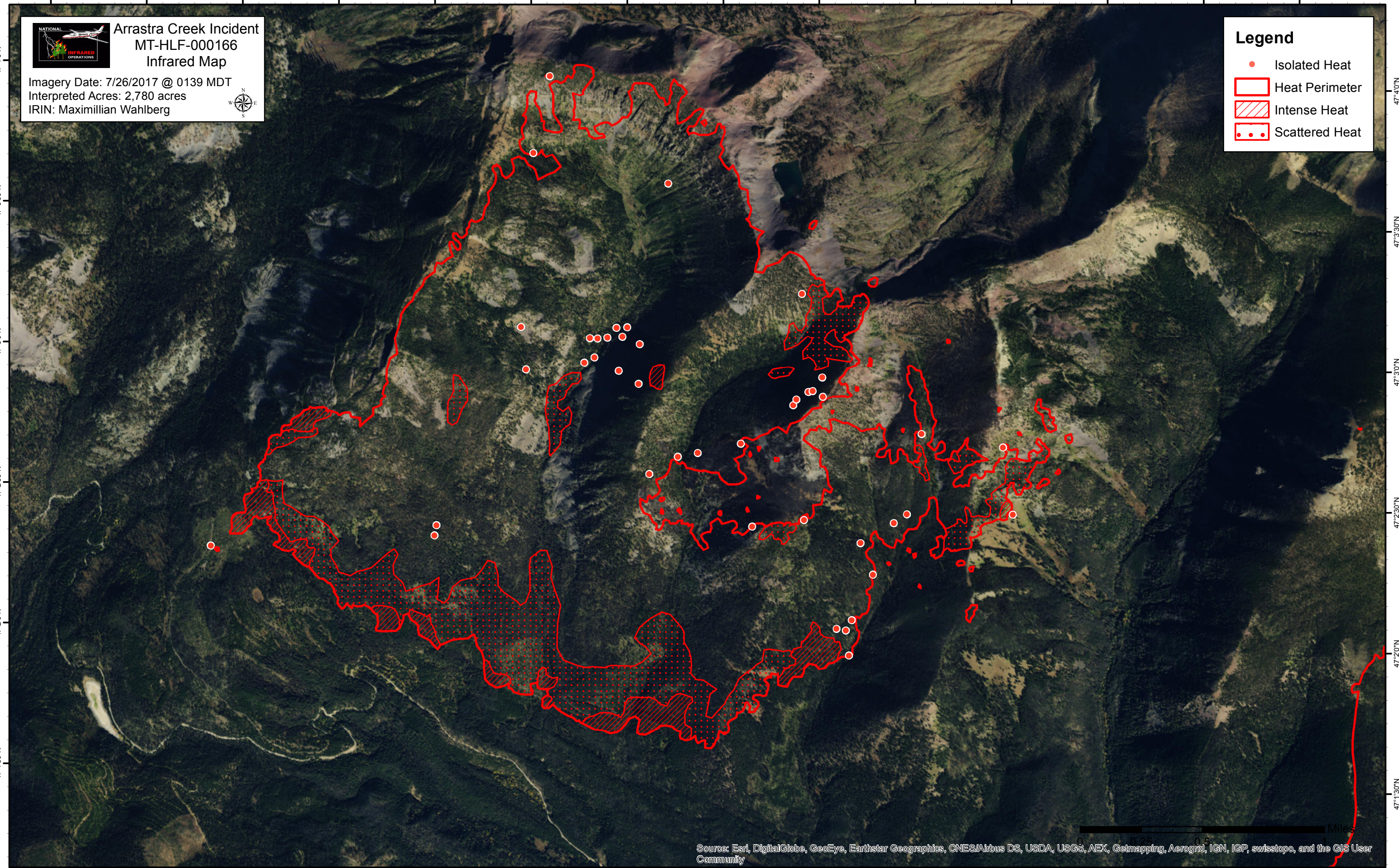


Legend

- Isolated Heat
- Heat Perimeter
- Intense Heat
- Scattered Heat

47°4'0"N
47°3'30"N
47°3'0"N
47°2'30"N
47°2'0"N
47°1'30"N

47°4'0"N
47°3'30"N
47°3'0"N
47°2'30"N
47°2'0"N
47°1'30"N



0 0.25 0.5 Miles

Source: Esri, DigitalGlobe, GeoEye, Earthstar Geographics, CNES/Airbus DS, USDA, USGS, AEX, Getmapping, Aerogrid, IGN, IGP, swisstopo, and the GIS User Community

112°49'0"W 112°48'30"W 112°48'0"W 112°47'30"W 112°47'0"W 112°46'30"W 112°46'0"W 112°45'30"W 112°45'0"W 112°44'30"W 112°44'0"W 112°43'30"W 112°43'0"W 112°42'30"W 112°42'0"W