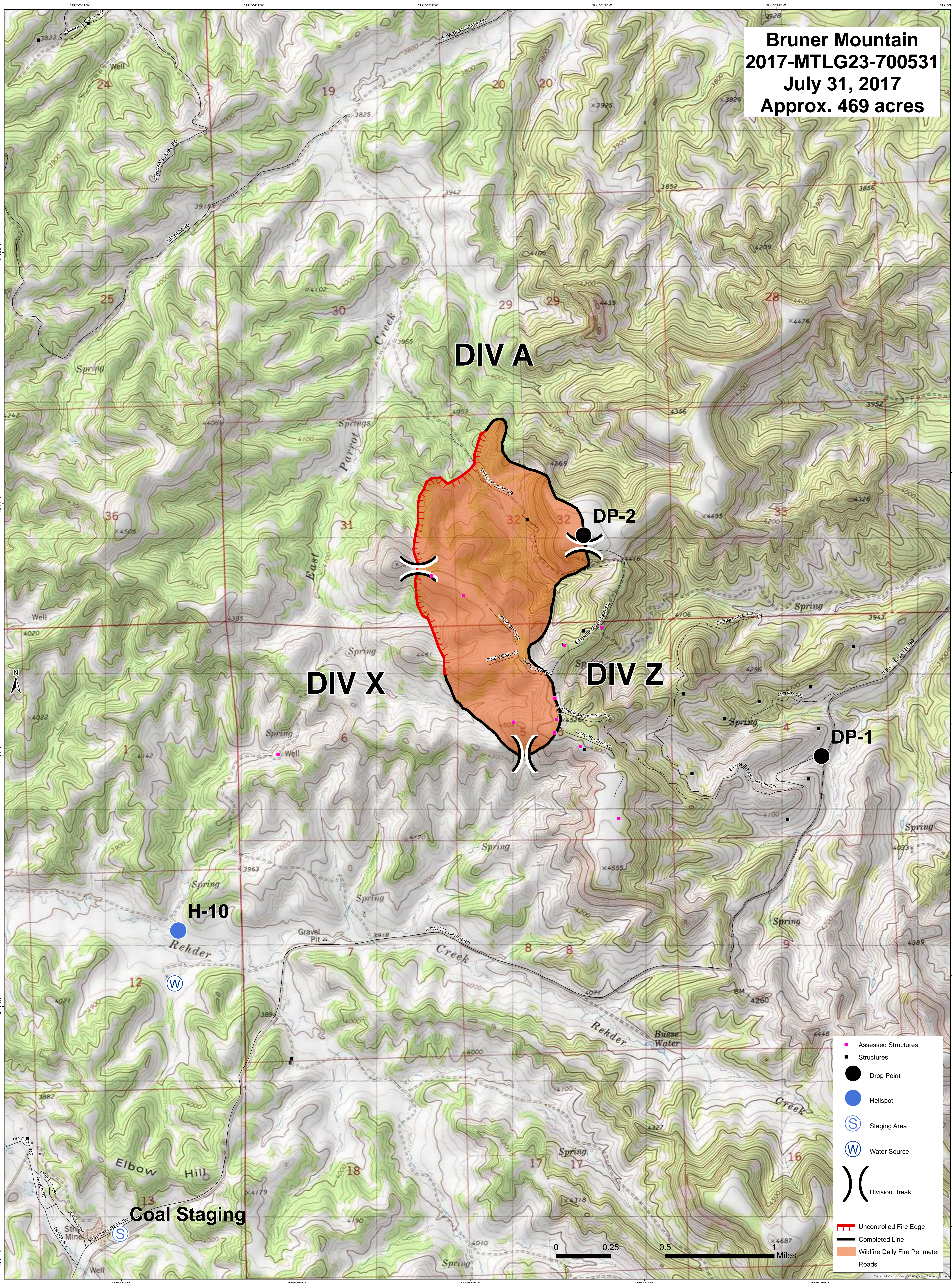


**Bruner Mountain**  
**2017-MTLG23-700531**  
**July 31, 2017**  
**Approx. 469 acres**



- Assessed Structures
- Structures
- Drop Point
- Helispot
- Ⓢ Staging Area
- Ⓜ Water Source
- )) Division Break
- Uncontrolled Fire Edge
- Completed Line
- ▭ Wildfire Daily Fire Perimeter
- Roads

0 0.25 0.5 1 Miles

**Coal Staging**

**H-10**

**DP-2**

**DP-1**

**DIV A**

**DIV X**

**DIV Z**

Map labels include: Parrot Creek, East Parrot Springs, Rehder Creek, Busse Water, Spring, Well, Gravel Pit, Elbow Hill, Coal Staging, and various elevation points (e.g., 3822, 3925, 4020, 4100, 4200, 4300, 4400, 4500, 4600).