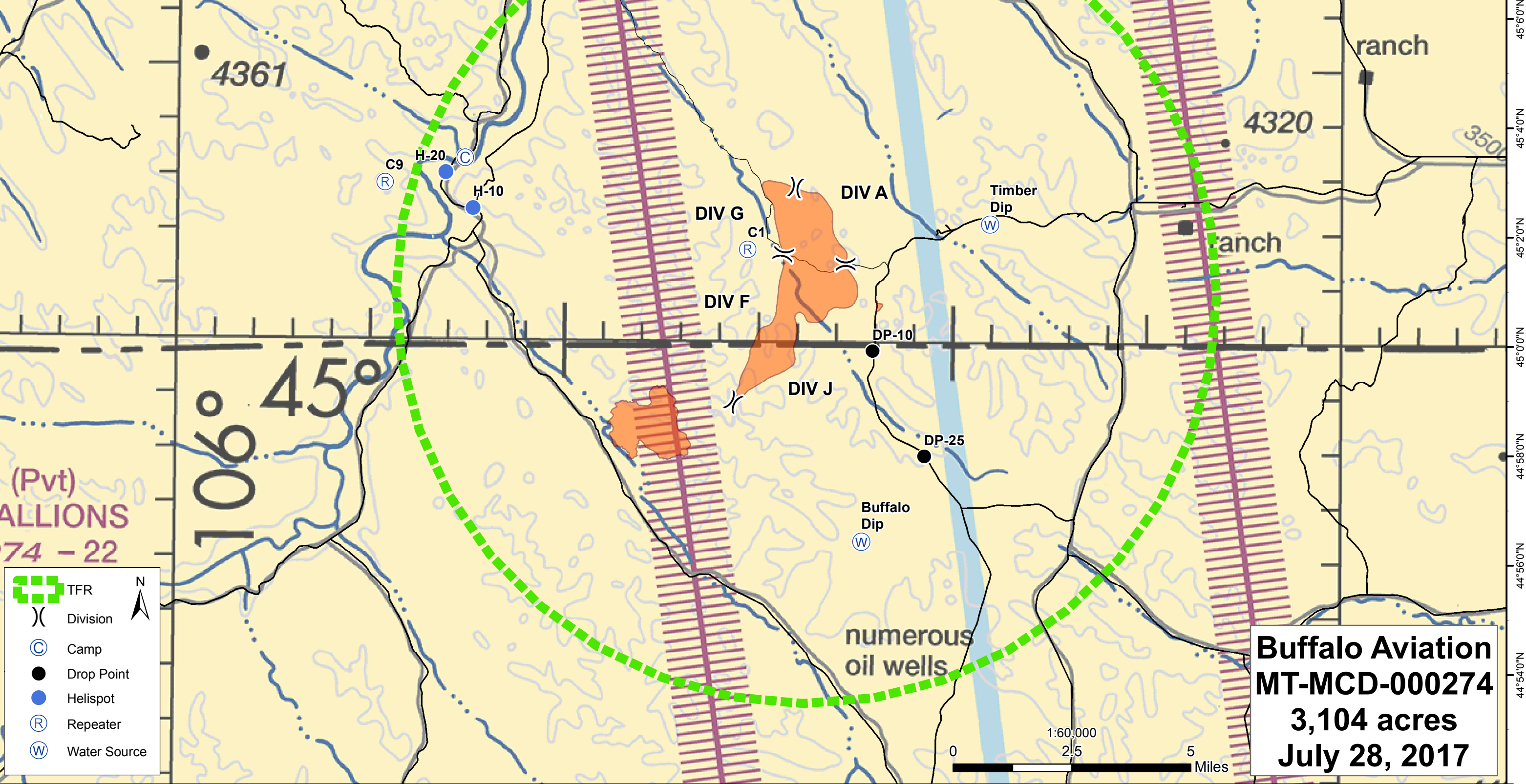


106°4'0"W 106°2'0"W 106°0'0"W 105°58'0"W 105°56'0"W 105°54'0"W 105°52'0"W 105°50'0"W 105°48'0"W 105°46'0"W 105°44'0"W 105°42'0"W 105°40'0"W 105°38'0"W 105°36'0"W 105°34'0"W 105°32'0"W 105°30'0"W 105°28'0"W 105°26'0"W

Name	Lat	Long	Elev (ft)
H-10	N 42 02.400	W 105 52.360	3,701
H-20	N 45 03.057	W 105 53.068	3,370
Timber Dip	N 45 02.180	W 105 39.030	4,045
Buffalo Dip	N 44 56.360	W 105 42.280	4,209



(Pvt)
ALLIONS
 74 - 22

106° 45'

- TFR
- Division
- Camp
- Drop Point
- Helispot
- Repeater
- Water Source

Buffalo Aviation
MT-MCD-000274
3,104 acres
July 28, 2017

106°4'0"W 106°2'0"W 106°0'0"W 105°58'0"W 105°56'0"W 105°54'0"W 105°52'0"W 105°50'0"W 105°48'0"W 105°46'0"W 105°44'0"W 105°42'0"W 105°40'0"W 105°38'0"W 105°36'0"W 105°34'0"W 105°32'0"W 105°30'0"W 105°28'0"W 105°26'0"W