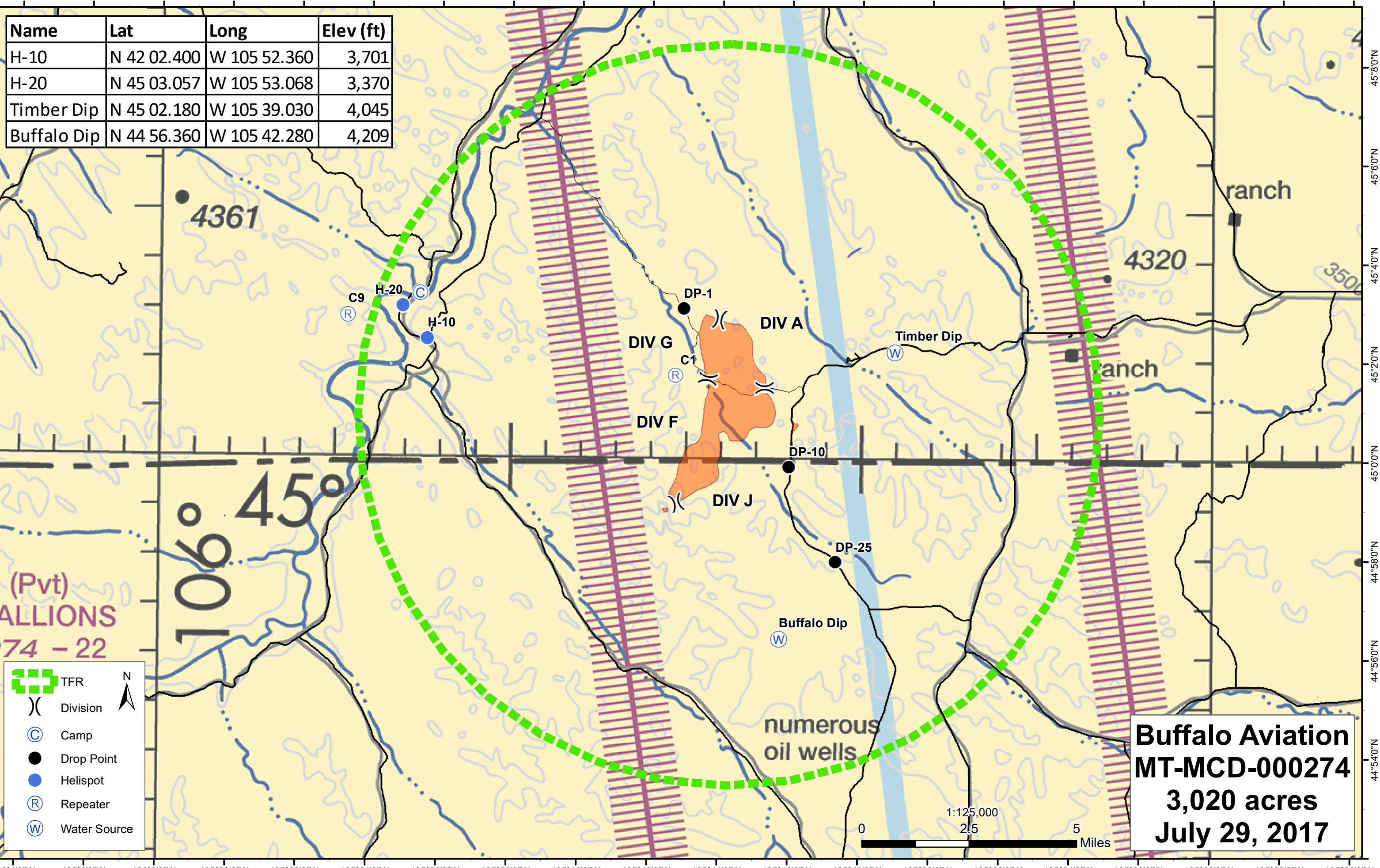


106°40'W 106°20'W 106°00'W 105°58'W 105°56'W 105°54'W 105°52'W 105°50'W 105°48'W 105°46'W 105°44'W 105°42'W 105°40'W 105°38'W 105°36'W 105°34'W 105°32'W 105°30'W 105°28'W 105°26'W

Name	Lat	Long	Elev (ft)
H-10	N 42 02.400	W 105 52.360	3,701
H-20	N 45 03.057	W 105 53.068	3,370
Timber Dip	N 45 02.180	W 105 39.030	4,045
Buffalo Dip	N 44 56.360	W 105 42.280	4,209



(Pvt)
ALLIONS
 74 - 22

106° 45'

- TFR
- Division
- Camp
- Drop Point
- Helispot
- Repeater
- Water Source

Buffalo Aviation
MT-MCD-000274
3,020 acres
July 29, 2017

1:125,000
 0 2.5 5 Miles

106°40'W 106°20'W 106°00'W 105°58'W 105°56'W 105°54'W 105°52'W 105°50'W 105°48'W 105°46'W 105°44'W 105°42'W 105°40'W 105°38'W 105°36'W 105°34'W 105°32'W 105°30'W 105°28'W 105°26'W