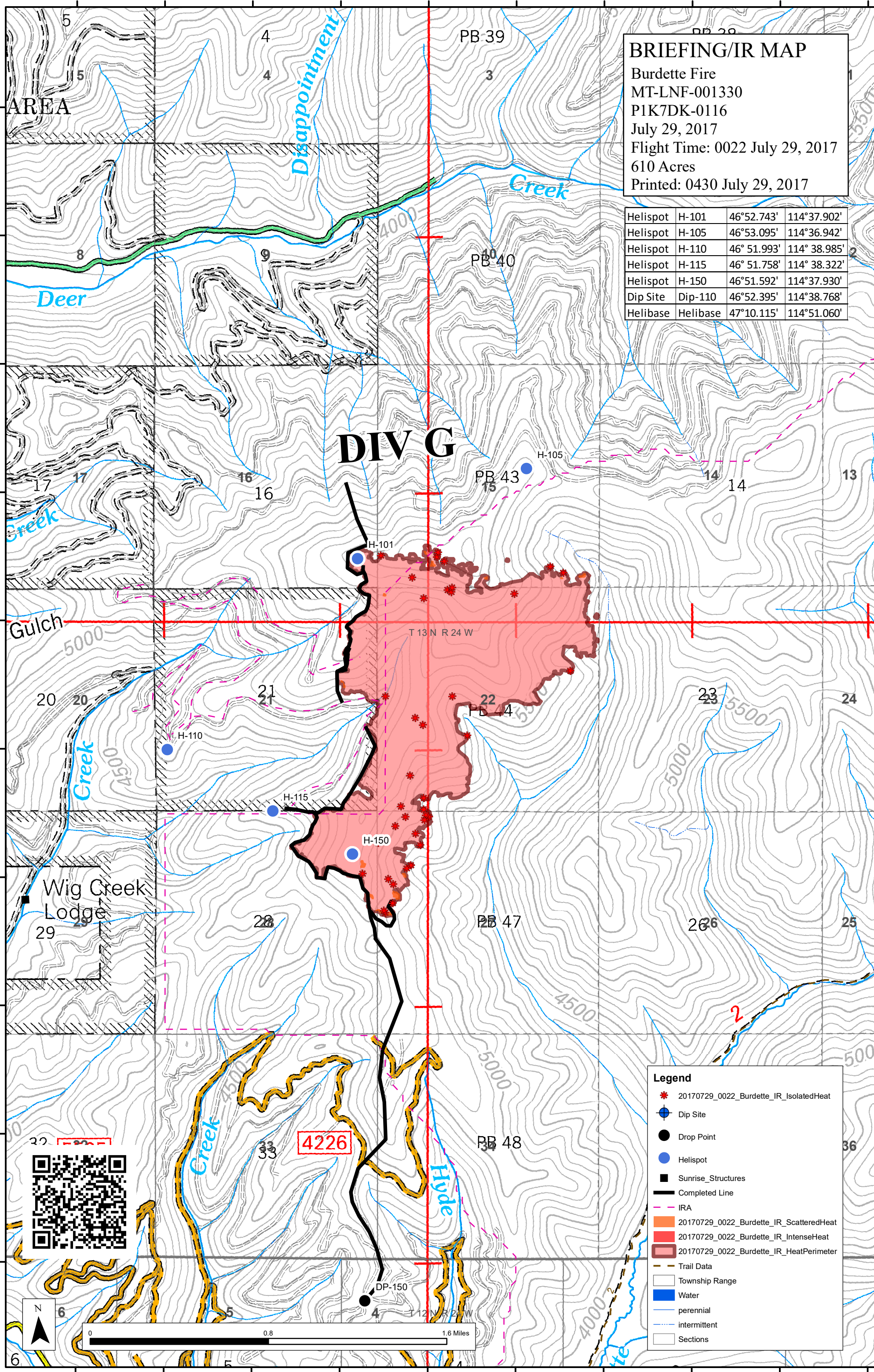


114°39'30"W 114°39'0"W 114°38'30"W 114°38'0"W 114°37'30"W 114°37'0"W 114°36'30"W 114°36'0"W 114°35'30"W 114°35'0"W

**BRIEFING/IR MAP**  
 Burdette Fire  
 MT-LNF-001330  
 P1K7DK-0116  
 July 29, 2017  
 Flight Time: 0022 July 29, 2017  
 610 Acres  
 Printed: 0430 July 29, 2017

Helispot	H-101	46°52.743'	114°37.902'
Helispot	H-105	46°53.095'	114°36.942'
Helispot	H-110	46° 51.993'	114° 38.985'
Helispot	H-115	46° 51.758'	114° 38.322'
Helispot	H-150	46°51.592'	114°37.930'
Dip Site	Dip-110	46°52.395'	114°38.768'
Helibase	Helibase	47°10.115'	114°51.060'

**DIV G**

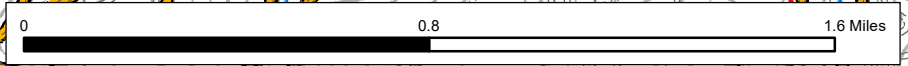


**Legend**

- \* 20170729\_0022\_Burdette\_IR\_IsolatedHeat
- Dip Site
- Drop Point
- Helispot
- Sunrise\_Structures
- Completed Line
- IRA
- 20170729\_0022\_Burdette\_IR\_ScatteredHeat
- 20170729\_0022\_Burdette\_IR\_IntenseHeat
- 20170729\_0022\_Burdette\_IR\_HeatPerimeter
- Trail Data
- Township Range
- Water
- perennial
- - - intermittent
- Sections



**4226**



114°39'30"W 114°39'0"W 114°38'30"W 114°38'0"W 114°37'30"W 114°37'0"W 114°36'30"W 114°36'0"W 114°35'30"W 114°35'0"W