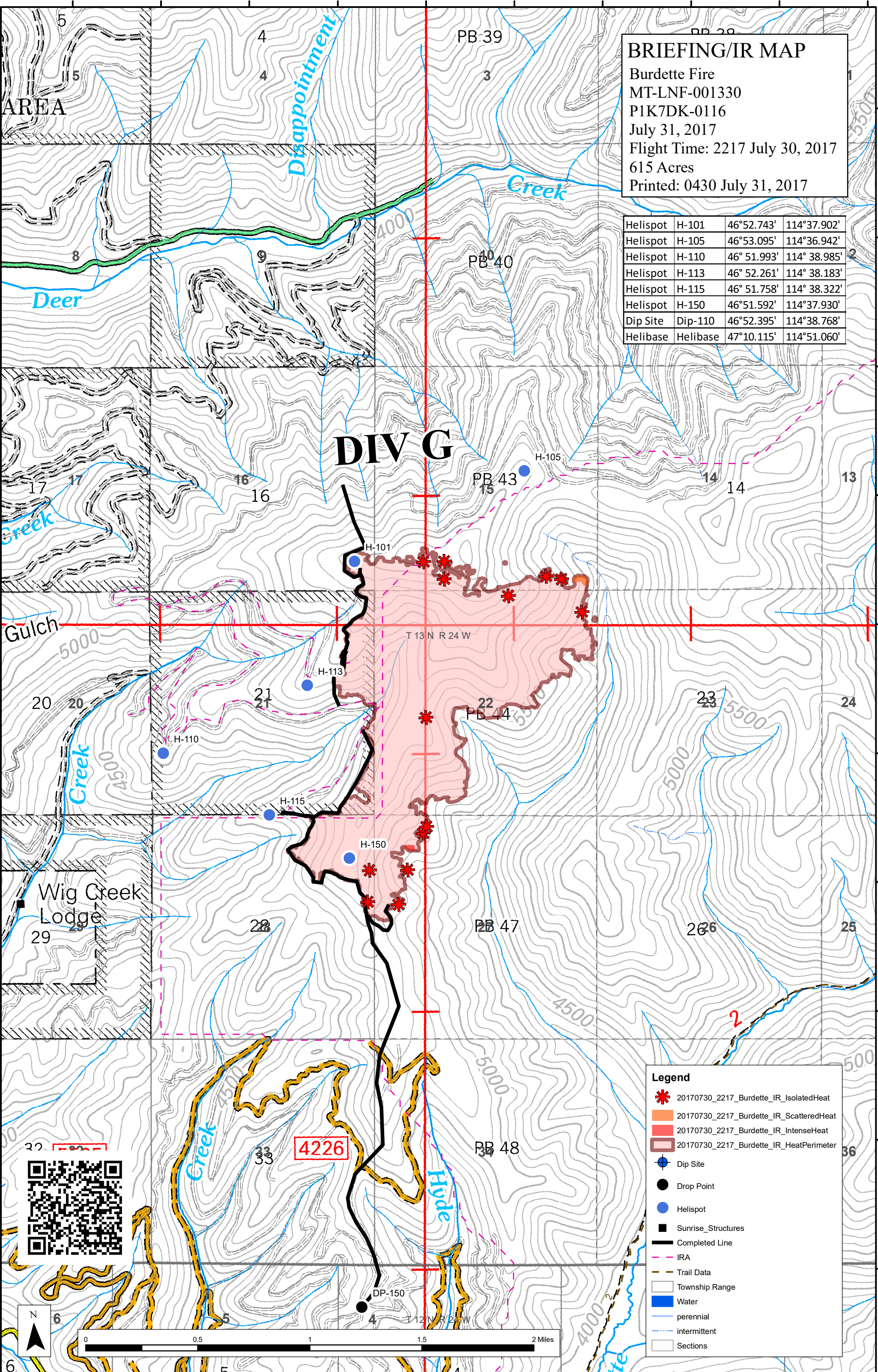


114°39'30"W 114°39'0"W 114°38'30"W 114°38'0"W 114°37'30"W 114°37'0"W 114°36'30"W 114°36'0"W 114°35'30"W 114°35'0"W

BRIEFING/IR MAP
 Burdette Fire
 MT-LNF-001330
 P1K7DK-0116
 July 31, 2017
 Flight Time: 2217 July 30, 2017
 615 Acres
 Printed: 0430 July 31, 2017

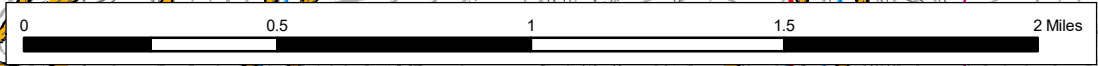
Helispot	H-101	46°52.743'	114°37.902'
Helispot	H-105	46°53.095'	114°36.942'
Helispot	H-110	46° 51.993'	114° 38.985'
Helispot	H-113	46° 52.261'	114° 38.183'
Helispot	H-115	46° 51.758'	114° 38.322'
Helispot	H-150	46°51.592'	114°37.930'
Dip Site	Dip-110	46°52.395'	114°38.768'
Helibase	Helibase	47°10.115'	114°51.060'

DIV G



Legend

- 20170730_2217_Burdette_IR_IsolatedHeat
- 20170730_2217_Burdette_IR_ScatteredHeat
- 20170730_2217_Burdette_IR_IntenseHeat
- 20170730_2217_Burdette_IR_HeatPerimeter
- Dip Site
- Drop Point
- Helispot
- Sunrise_Structures
- Completed Line
- IRA
- Trail Data
- Township Range
- Water
- perennial
- intermittent
- Sections



114°39'30"W 114°39'0"W 114°38'30"W 114°38'0"W 114°37'30"W 114°37'0"W 114°36'30"W 114°36'0"W 114°35'30"W 114°35'0"W