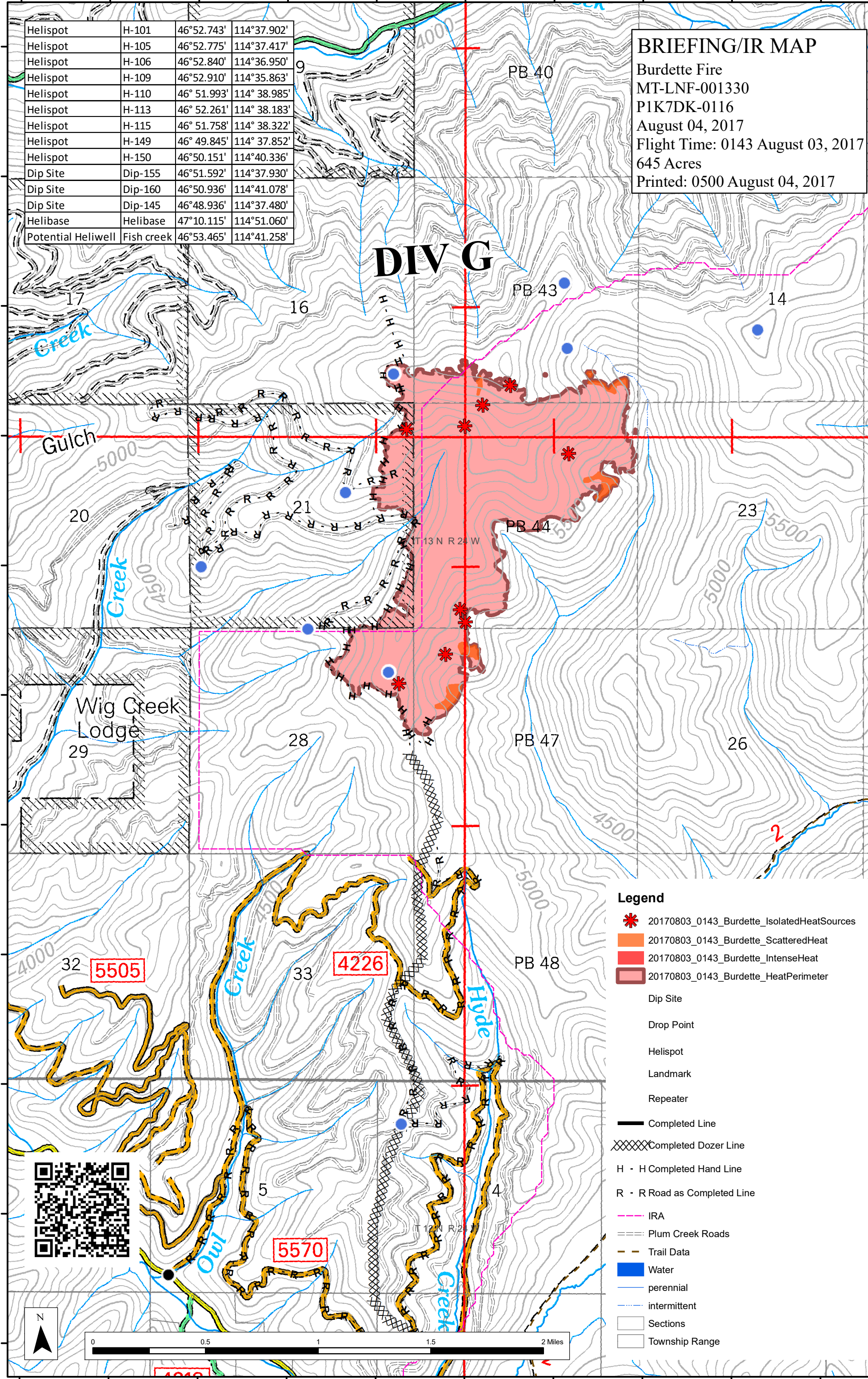


114°40'0"W 114°39'30"W 114°39'0"W 114°38'30"W 114°38'0"W 114°37'30"W 114°37'0"W 114°36'30"W 114°36'0"W 114°35'30"W

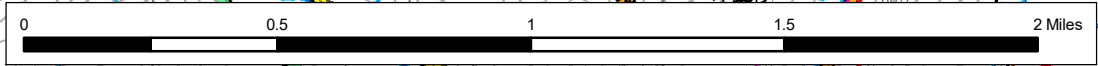


**BRIEFING/IR MAP**  
 Burdette Fire  
 MT-LNF-001330  
 PIK7DK-0116  
 August 04, 2017  
 Flight Time: 0143 August 03, 2017  
 645 Acres  
 Printed: 0500 August 04, 2017

|                    |            |             |              |
|--------------------|------------|-------------|--------------|
| Helispot           | H-101      | 46°52.743'  | 114°37.902'  |
| Helispot           | H-105      | 46°52.775'  | 114°37.417'  |
| Helispot           | H-106      | 46°52.840'  | 114°36.950'  |
| Helispot           | H-109      | 46°52.910'  | 114°35.863'  |
| Helispot           | H-110      | 46° 51.993' | 114° 38.985' |
| Helispot           | H-113      | 46° 52.261' | 114° 38.183' |
| Helispot           | H-115      | 46° 51.758' | 114° 38.322' |
| Helispot           | H-149      | 46° 49.845' | 114° 37.852' |
| Helispot           | H-150      | 46°50.151'  | 114°40.336'  |
| Dip Site           | Dip-155    | 46°51.592'  | 114°37.930'  |
| Dip Site           | Dip-160    | 46°50.936'  | 114°41.078'  |
| Dip Site           | Dip-145    | 46°48.936'  | 114°37.480'  |
| Helibase           | Helibase   | 47°10.115'  | 114°51.060'  |
| Potential Heliwell | Fish creek | 46°53.465'  | 114°41.258'  |

**DIV G**

- Legend**
- 20170803\_0143\_Burdette\_IsolatedHeatSources
  - 20170803\_0143\_Burdette\_ScatteredHeat
  - 20170803\_0143\_Burdette\_IntenseHeat
  - 20170803\_0143\_Burdette\_HeatPerimeter
  - Dip Site
  - Drop Point
  - Helispot
  - Landmark
  - Repeater
  - Completed Line
  - Completed Dozer Line
  - H - H Completed Hand Line
  - R - R Road as Completed Line
  - IRA
  - Plum Creek Roads
  - Trail Data
  - Water
  - perennial
  - intermittent
  - Sections
  - Township Range



114°40'0"W 114°39'30"W 114°39'0"W 114°38'30"W 114°38'0"W 114°37'30"W 114°37'0"W 114°36'30"W 114°36'0"W 114°35'30"W