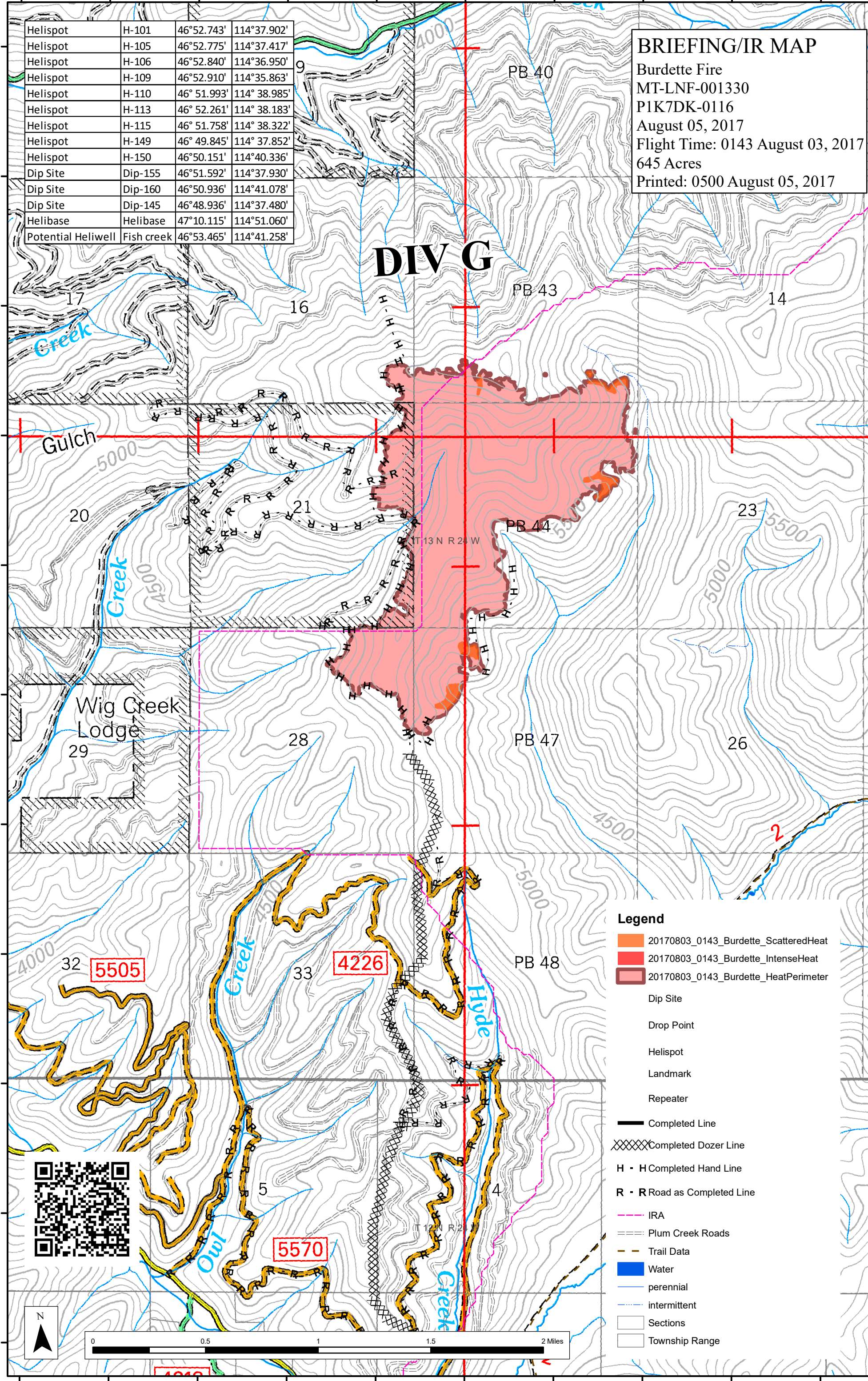


114°40'0"W 114°39'30"W 114°39'0"W 114°38'30"W 114°38'0"W 114°37'30"W 114°37'0"W 114°36'30"W 114°36'0"W 114°35'30"W

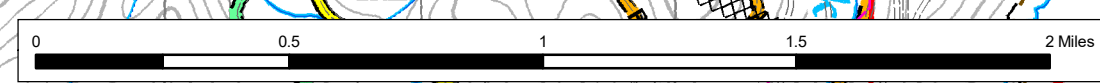


**BRIEFING/IR MAP**  
 Burdette Fire  
 MT-LNF-001330  
 PIK7DK-0116  
 August 05, 2017  
 Flight Time: 0143 August 03, 2017  
 645 Acres  
 Printed: 0500 August 05, 2017

**DIV G**

Helispot	H-101	46°52.743'	114°37.902'
Helispot	H-105	46°52.775'	114°37.417'
Helispot	H-106	46°52.840'	114°36.950'
Helispot	H-109	46°52.910'	114°35.863'
Helispot	H-110	46° 51.993'	114° 38.985'
Helispot	H-113	46° 52.261'	114° 38.183'
Helispot	H-115	46° 51.758'	114° 38.322'
Helispot	H-149	46° 49.845'	114° 37.852'
Helispot	H-150	46°50.151'	114°40.336'
Dip Site	Dip-155	46°51.592'	114°37.930'
Dip Site	Dip-160	46°50.936'	114°41.078'
Dip Site	Dip-145	46°48.936'	114°37.480'
Helibase	Helibase	47°10.115'	114°51.060'
Potential Heliwell	Fish creek	46°53.465'	114°41.258'

- Legend**
- 20170803\_0143\_Burdette\_ScatteredHeat
  - 20170803\_0143\_Burdette\_IntenseHeat
  - 20170803\_0143\_Burdette\_HeatPerimeter
  - Dip Site
  - Drop Point
  - Helispot
  - Landmark
  - Repeater
  - Completed Line
  - Completed Dozer Line
  - H · H Completed Hand Line
  - R · R Road as Completed Line
  - IRA
  - Plum Creek Roads
  - Trail Data
  - Water
  - perennial
  - intermittent
  - Sections
  - Township Range



114°40'0"W 114°39'30"W 114°39'0"W 114°38'30"W 114°38'0"W 114°37'30"W 114°37'0"W 114°36'30"W 114°36'0"W 114°35'30"W