


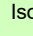

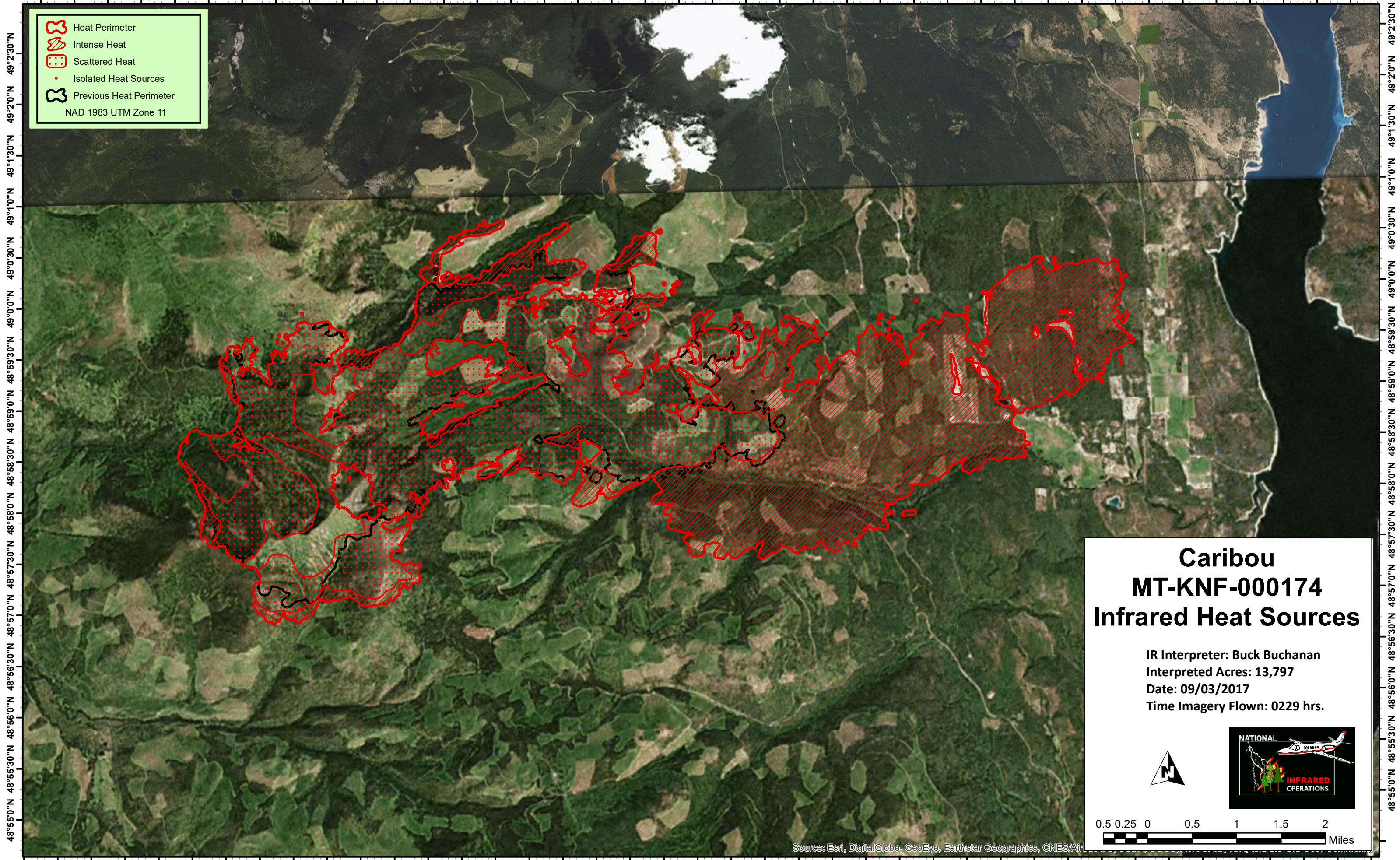




115°28'30"W 115°27'30"W 115°26'30"W 115°25'30"W 115°24'30"W 115°23'30"W 115°22'30"W 115°21'30"W 115°20'30"W 115°19'30"W 115°18'30"W 115°17'30"W 115°16'30"W 115°15'30"W 115°14'30"W 115°13'30"W 115°12'30"W 115°11'30"W 115°10'30"W 115°9'30"W


 Heat Perimeter  
 Intense Heat  
 Scattered Heat  
 Isolated Heat Sources  
 Previous Heat Perimeter  
 NAD 1983 UTM Zone 11



**Caribou**  
**MT-KNF-000174**  
**Infrared Heat Sources**

IR Interpreter: Buck Buchanan  
 Interpreted Acres: 13,797  
 Date: 09/03/2017  
 Time Imagery Flown: 0229 hrs.

0.5 0.25 0 0.5 1 1.5 2  
 Miles

Source: Esri, DigitalGlobe, GeoEye, Earthstar Geographics, CNES/Air

115°29'30"W 115°28'30"W 115°27'30"W 115°26'30"W 115°25'30"W 115°24'30"W 115°23'30"W 115°22'30"W 115°21'30"W 115°20'30"W 115°19'30"W 115°18'30"W 115°17'30"W 115°16'30"W 115°15'30"W 115°14'30"W 115°13'30"W 115°12'30"W 115°11'30"W 115°10'30"W 115°9'30"W