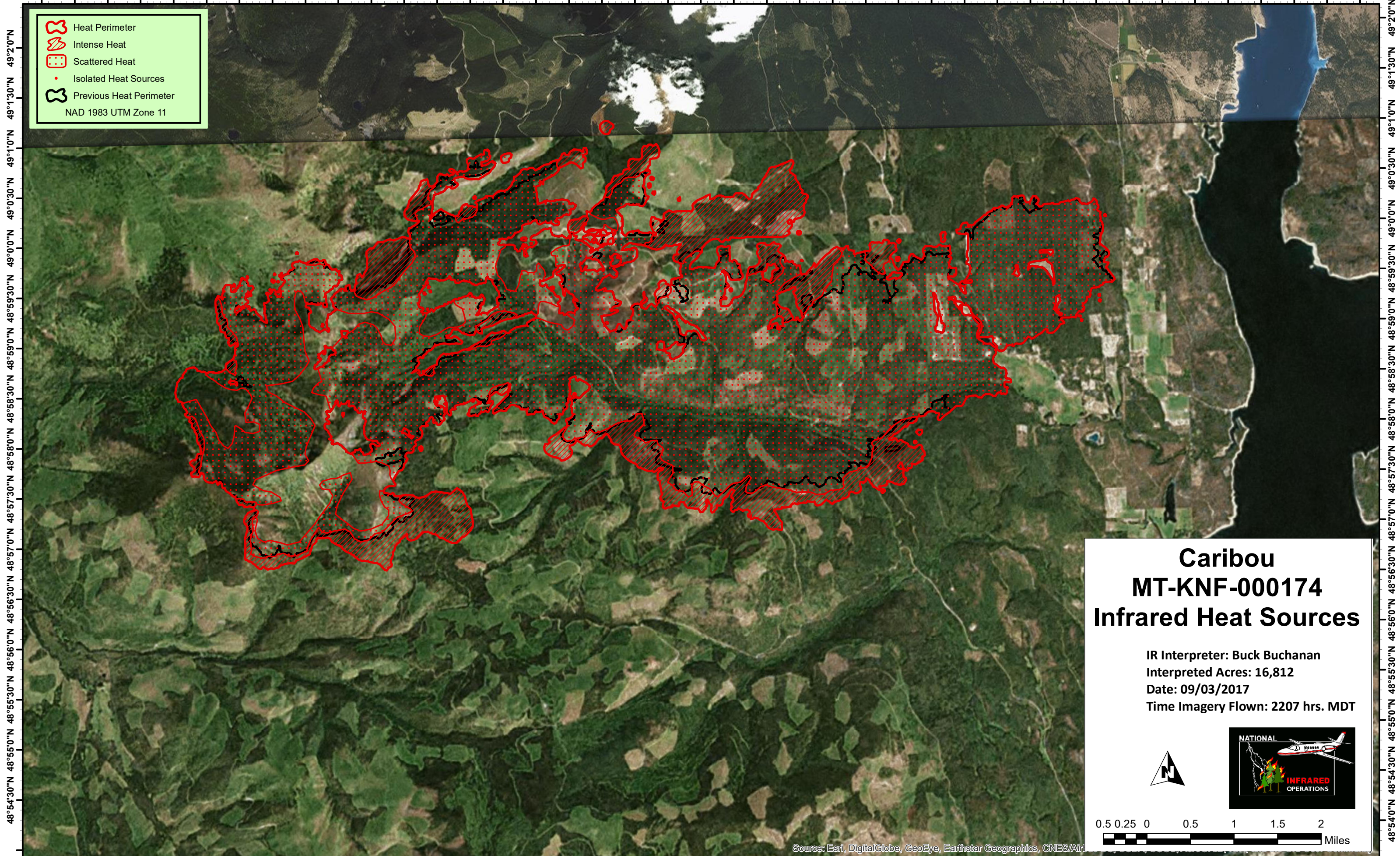







115°29'0"W 115°28'0"W 115°27'0"W 115°26'0"W 115°25'0"W 115°24'0"W 115°23'0"W 115°22'0"W 115°21'0"W 115°20'0"W 115°19'0"W 115°18'0"W 115°17'0"W 115°16'0"W 115°15'0"W 115°14'0"W 115°13'0"W 115°12'0"W 115°11'0"W 115°10'0"W 115°9'0"W



-  Heat Perimeter
-  Intense Heat
-  Scattered Heat
-  Isolated Heat Sources
-  Previous Heat Perimeter

NAD 1983 UTM Zone 11

Caribou MT-KNF-000174 Infrared Heat Sources

IR Interpreter: Buck Buchanan
 Interpreted Acres: 16,812
 Date: 09/03/2017
 Time Imagery Flown: 2207 hrs. MDT



Source: Esri, DigitalGlobe, GeoEye, Earthstar Geographics, CNES/Air

115°29'30"W 115°28'30"W 115°27'30"W 115°26'30"W 115°25'30"W 115°24'30"W 115°23'30"W 115°22'30"W 115°21'30"W 115°20'30"W 115°19'30"W 115°18'30"W 115°17'30"W 115°16'30"W 115°15'30"W 115°14'30"W 115°13'30"W 115°12'30"W 115°11'30"W 115°10'30"W 115°9'30"W