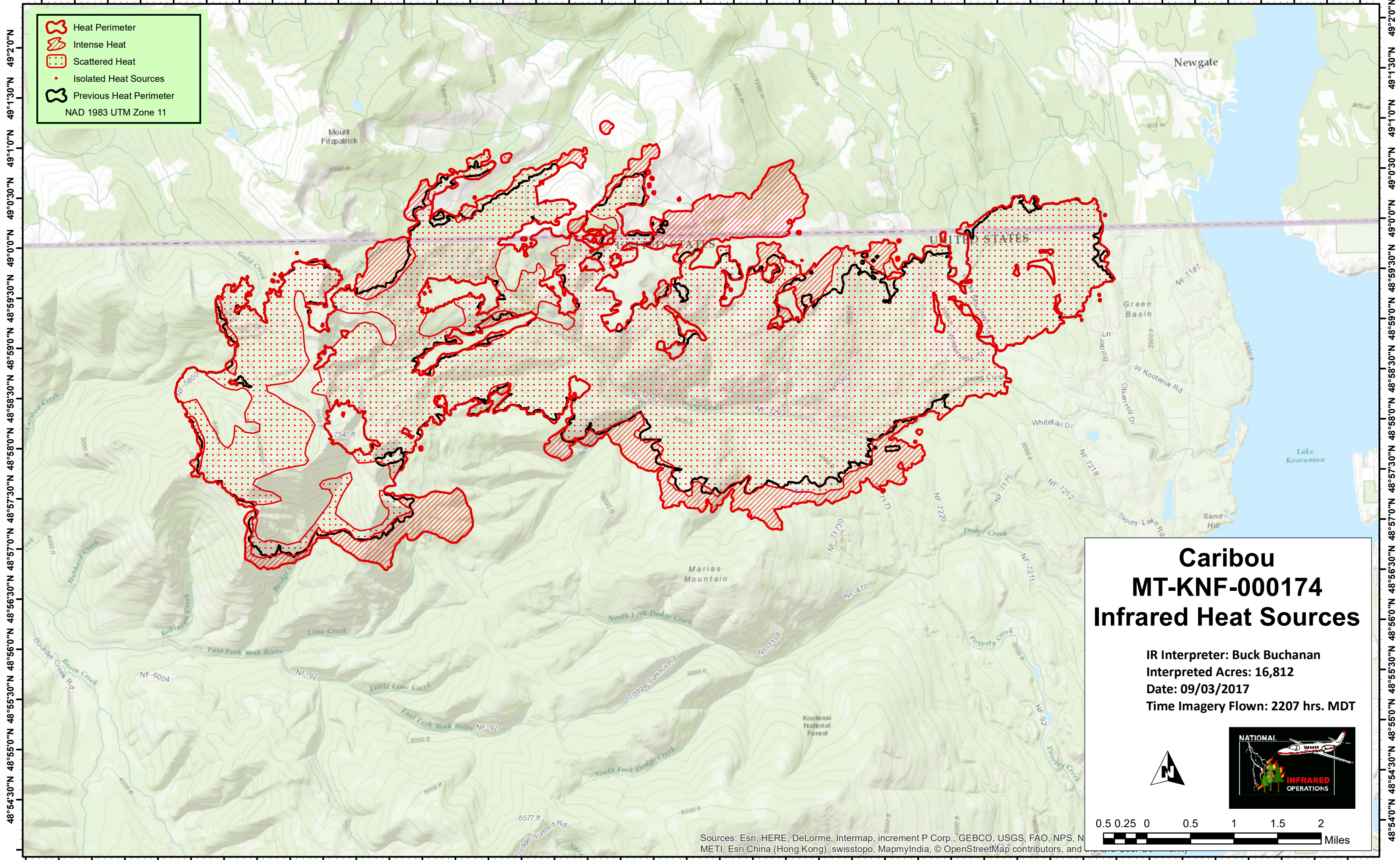







115°29'0"W 115°28'0"W 115°27'0"W 115°26'0"W 115°25'0"W 115°24'0"W 115°23'0"W 115°22'0"W 115°21'0"W 115°20'0"W 115°19'0"W 115°18'0"W 115°17'0"W 115°16'0"W 115°15'0"W 115°14'0"W 115°13'0"W 115°12'0"W 115°11'0"W 115°10'0"W 115°9'0"W



-  Heat Perimeter
-  Intense Heat
-  Scattered Heat
-  Isolated Heat Sources
-  Previous Heat Perimeter

NAD 1983 UTM Zone 11

# Caribou MT-KNF-000174 Infrared Heat Sources

IR Interpreter: Buck Buchanan  
 Interpreted Acres: 16,812  
 Date: 09/03/2017  
 Time Imagery Flown: 2207 hrs. MDT



Sources: Esri, HERE, DeLorme, Intermap, increment P Corp., GEBCO, USGS, FAO, NPS, NMEA, Esri China (Hong Kong), swisstopo, MapmyIndia, © OpenStreetMap contributors, and the GIS User Community

115°29'30"W 115°28'30"W 115°27'30"W 115°26'30"W 115°25'30"W 115°24'30"W 115°23'30"W 115°22'30"W 115°21'30"W 115°20'30"W 115°19'30"W 115°18'30"W 115°17'30"W 115°16'30"W 115°15'30"W 115°14'30"W 115°13'30"W 115°12'30"W 115°11'30"W 115°10'30"W 115°9'30"W

49°20'0"N 49°13'0"N 49°10'0"N 49°0'30"N 49°0'0"N 48°59'30"N 48°59'0"N 48°58'30"N 48°58'0"N 48°57'30"N 48°57'0"N 48°56'30"N 48°56'0"N 48°55'30"N 48°55'0"N 48°54'30"N 48°54'0"N

49°20'0"N 49°13'0"N 49°10'0"N 49°0'30"N 49°0'0"N 48°59'30"N 48°59'0"N 48°58'30"N 48°58'0"N 48°57'30"N 48°57'0"N 48°56'30"N 48°56'0"N 48°55'30"N 48°55'0"N 48°54'30"N 48°54'0"N