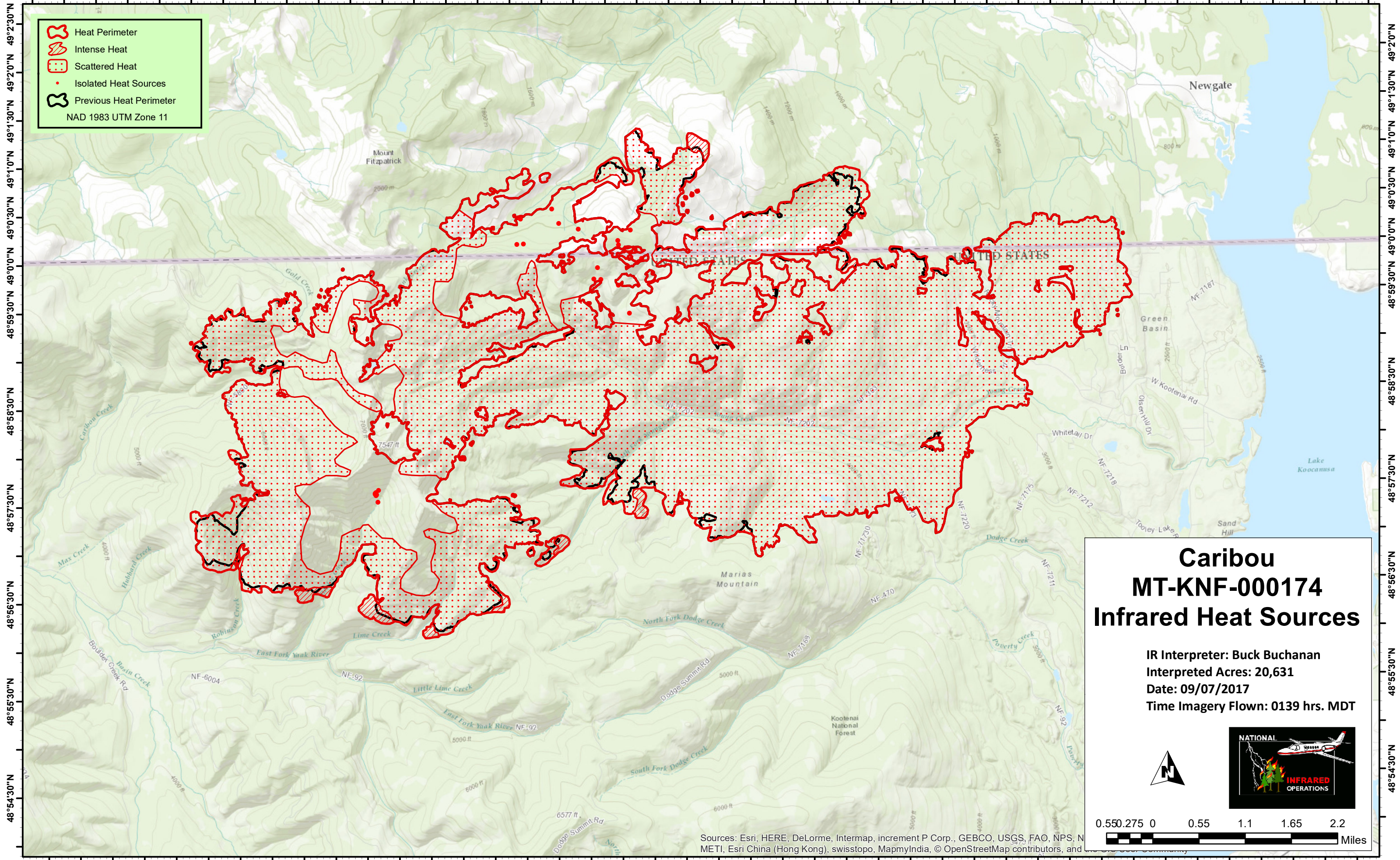









115°30'0"W 115°29'0"W 115°28'0"W 115°27'0"W 115°26'0"W 115°25'0"W 115°24'0"W 115°23'0"W 115°22'0"W 115°21'0"W 115°20'0"W 115°19'0"W 115°18'0"W 115°17'0"W 115°16'0"W 115°15'0"W 115°14'0"W 115°13'0"W 115°12'0"W 115°11'0"W 115°10'0"W 115°9'0"W

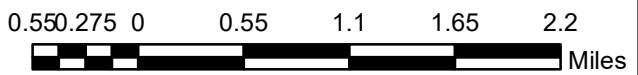


 Heat Perimeter
 Intense Heat
 Scattered Heat
 Isolated Heat Sources
 Previous Heat Perimeter
 NAD 1983 UTM Zone 11

Caribou
MT-KNF-000174
Infrared Heat Sources

IR Interpreter: Buck Buchanan
 Interpreted Acres: 20,631
 Date: 09/07/2017
 Time Imagery Flown: 0139 hrs. MDT



0.55 0.275 0 0.55 1.1 1.65 2.2 Miles

115°29'30"W 115°28'30"W 115°27'30"W 115°26'30"W 115°25'30"W 115°24'30"W 115°23'30"W 115°22'30"W 115°21'30"W 115°20'30"W 115°19'30"W 115°18'30"W 115°17'30"W 115°16'30"W 115°15'30"W 115°14'30"W 115°13'30"W 115°12'30"W 115°11'30"W 115°10'30"W 115°9'30"W

Sources: Esri, HERE, DeLorme, Intermap, increment P Corp., GEBCO, USGS, FAO, NPS, N METI, Esri China (Hong Kong), swiss topo, MapmyIndia, © OpenStreetMap contributors, and