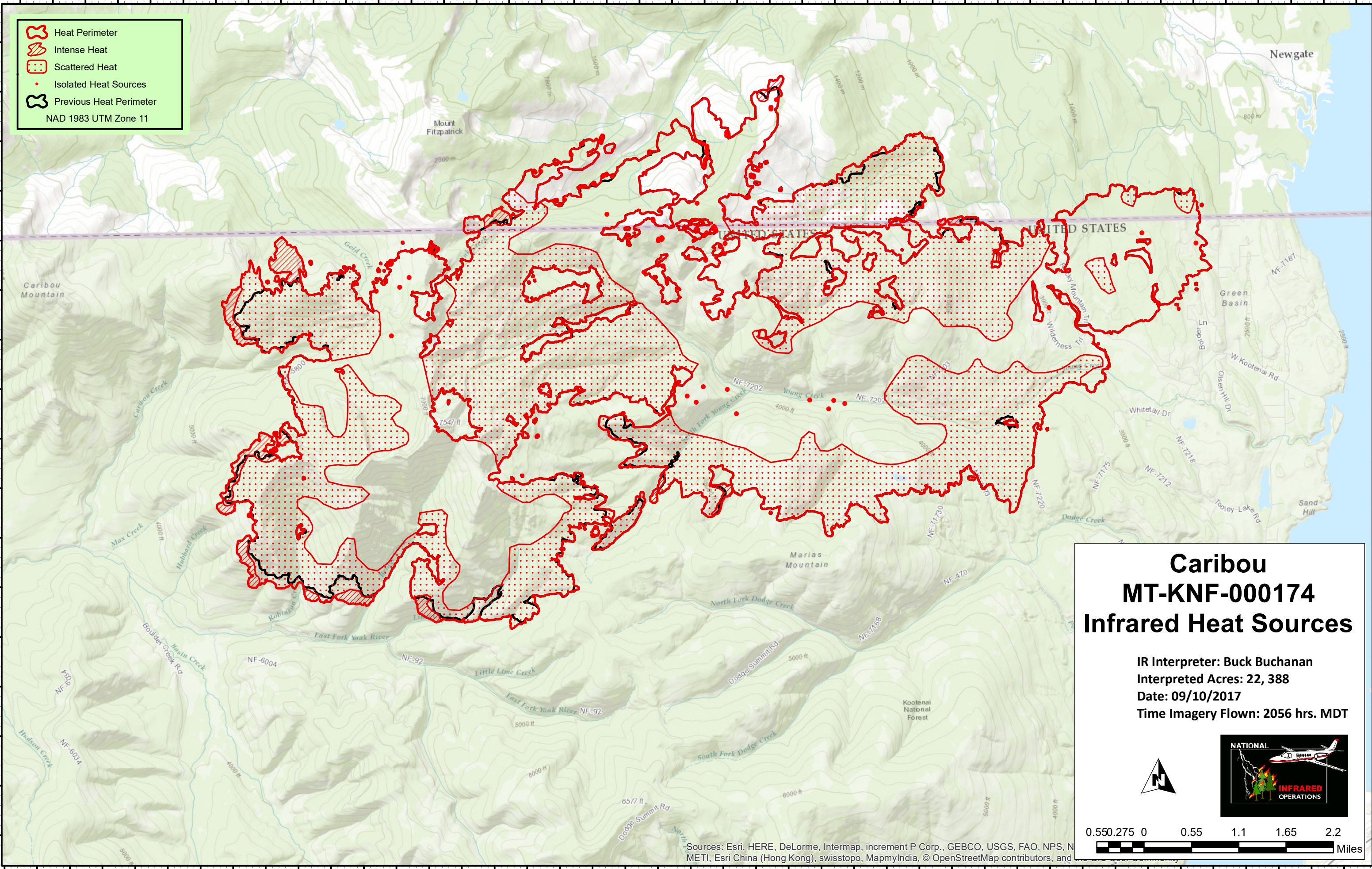


115°30'30"W 115°29'30"W 115°28'30"W 115°27'30"W 115°26'30"W 115°25'30"W 115°24'30"W 115°23'30"W 115°22'30"W 115°21'30"W 115°20'30"W 115°19'30"W 115°18'30"W 115°17'30"W 115°16'30"W 115°15'30"W 115°14'30"W 115°13'30"W 115°12'30"W 115°11'30"W 115°10'30"W

48°54'0"N 48°54'30"N 48°55'0"N 48°55'30"N 48°56'0"N 48°56'30"N 48°57'0"N 48°57'30"N 48°58'0"N 48°58'30"N 48°59'0"N 48°59'30"N 49°0'0"N 49°0'30"N 49°1'0"N 49°1'30"N 49°2'0"N

Heat Perimeter
 Intense Heat
 Scattered Heat
 Isolated Heat Sources
 Previous Heat Perimeter
 NAD 1983 UTM Zone 11



Caribou
MT-KNF-000174
Infrared Heat Sources

IR Interpreter: Buck Buchanan
 Interpreted Acres: 22, 388
 Date: 09/10/2017
 Time Imagery Flown: 2056 hrs. MDT

0.55 0.275 0 0.55 1.1 1.65 2.2 Miles

Sources: Esri, HERE, DeLorme, Intermap, increment P Corp., GEBCO, USGS, FAO, NPS, NMEA, Esri China (Hong Kong), swisstopo, MapmyIndia, © OpenStreetMap contributors, and the GIS User Community

115°31'0"W 115°30'0"W 115°29'0"W 115°28'0"W 115°27'0"W 115°26'0"W 115°25'0"W 115°24'0"W 115°23'0"W 115°22'0"W 115°21'0"W 115°20'0"W 115°19'0"W 115°18'0"W 115°17'0"W 115°16'0"W 115°15'0"W 115°14'0"W 115°13'0"W 115°12'0"W 115°11'0"W

48°53'30"N 48°54'0"N 48°54'30"N 48°55'0"N 48°55'30"N 48°56'0"N 48°56'30"N 48°57'0"N 48°57'30"N 48°58'0"N 48°58'30"N 48°59'0"N 48°59'30"N 49°0'0"N 49°0'30"N 49°1'0"N 49°1'30"N