

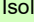

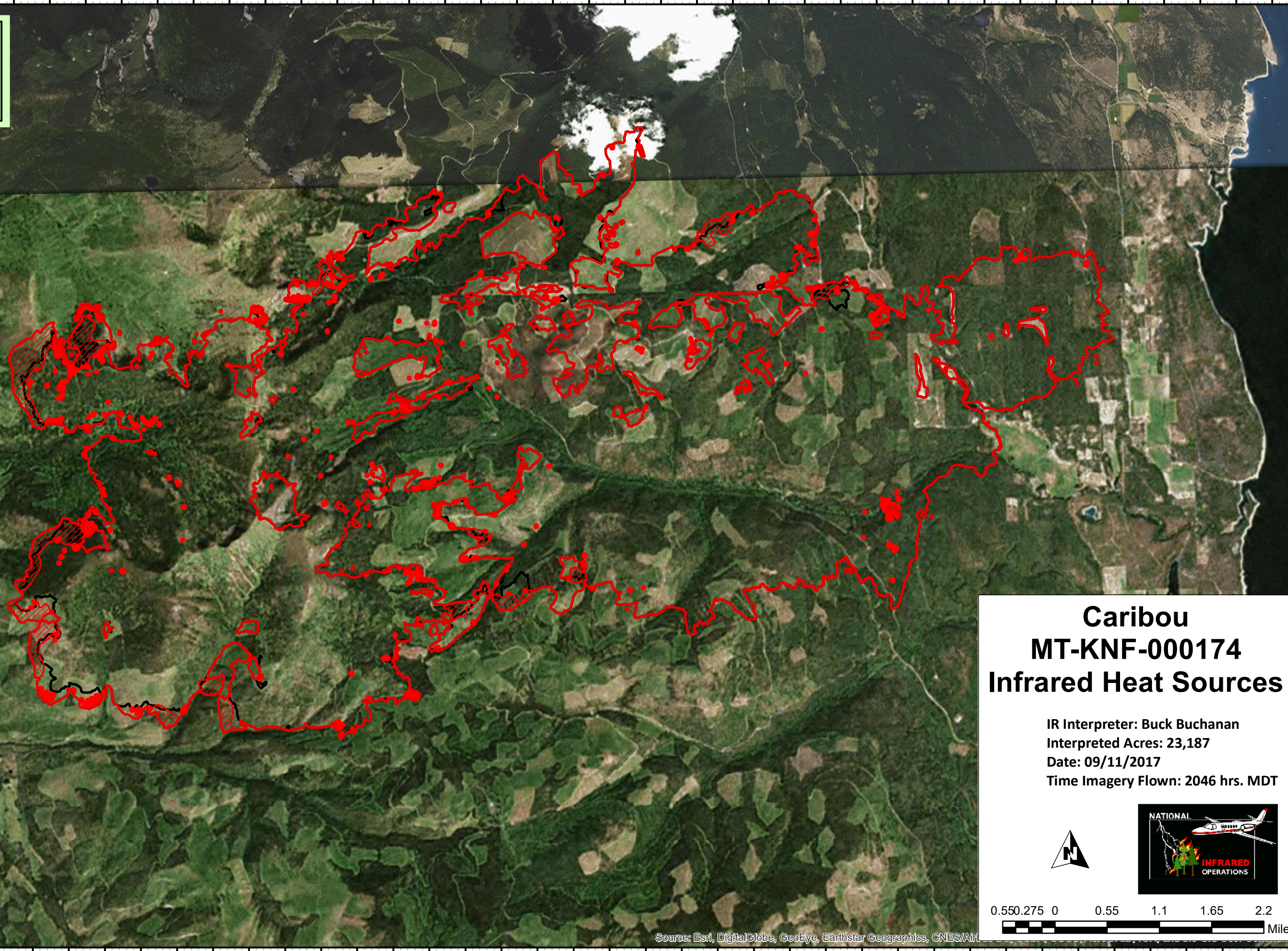


115°30'30"W 115°29'30"W 115°28'30"W 115°27'30"W 115°26'30"W 115°25'30"W 115°24'30"W 115°23'30"W 115°22'30"W 115°21'30"W 115°20'30"W 115°19'30"W 115°18'30"W 115°17'30"W 115°16'30"W 115°15'30"W 115°14'30"W 115°13'30"W 115°12'30"W 115°11'30"W 115°10'30"W

49°23'30"N  
49°22'30"N  
49°21'30"N  
49°20'30"N  
49°19'30"N  
49°18'30"N  
49°17'30"N  
49°16'30"N  
49°15'30"N  
49°14'30"N  
49°13'30"N  
49°12'30"N  
49°11'30"N  
49°10'30"N  
49°09'30"N  
49°08'30"N  
49°07'30"N  
49°06'30"N  
49°05'30"N  
49°04'30"N  
49°03'30"N  
49°02'30"N  
49°01'30"N  
49°00'30"N  
48°59'30"N  
48°58'30"N  
48°57'30"N  
48°56'30"N  
48°55'30"N  
48°54'30"N



49°23'30"N  
49°22'30"N  
49°21'30"N  
49°20'30"N  
49°19'30"N  
49°18'30"N  
49°17'30"N  
49°16'30"N  
49°15'30"N  
49°14'30"N  
49°13'30"N  
49°12'30"N  
49°11'30"N  
49°10'30"N  
49°09'30"N  
49°08'30"N  
49°07'30"N  
49°06'30"N  
49°05'30"N  
49°04'30"N  
49°03'30"N  
49°02'30"N  
49°01'30"N  
49°00'30"N  
48°59'30"N  
48°58'30"N  
48°57'30"N  
48°56'30"N  
48°55'30"N  
48°54'30"N

 Heat Perimeter  
 Intense Heat  
 Isolated Heat Sources  
 Previous Heat Perimeter  
 NAD 1983 UTM Zone 11




**Caribou  
MT-KNF-000174  
Infrared Heat Sources**

IR Interpreter: Buck Buchanan  
 Interpreted Acres: 23,187  
 Date: 09/11/2017  
 Time Imagery Flown: 2046 hrs. MDT

0.550.275 0 0.55 1.1 1.65 2.2



Miles

Source: Esri, DigitalGlobe, GeoEye, Earthstar Geographics, CNES/Air

115°30'30"W 115°29'30"W 115°28'30"W 115°27'30"W 115°26'30"W 115°25'30"W 115°24'30"W 115°23'30"W 115°22'30"W 115°21'30"W 115°20'30"W 115°19'30"W 115°18'30"W 115°17'30"W 115°16'30"W 115°15'30"W 115°14'30"W 115°13'30"W 115°12'30"W 115°11'30"W 115°10'30"W