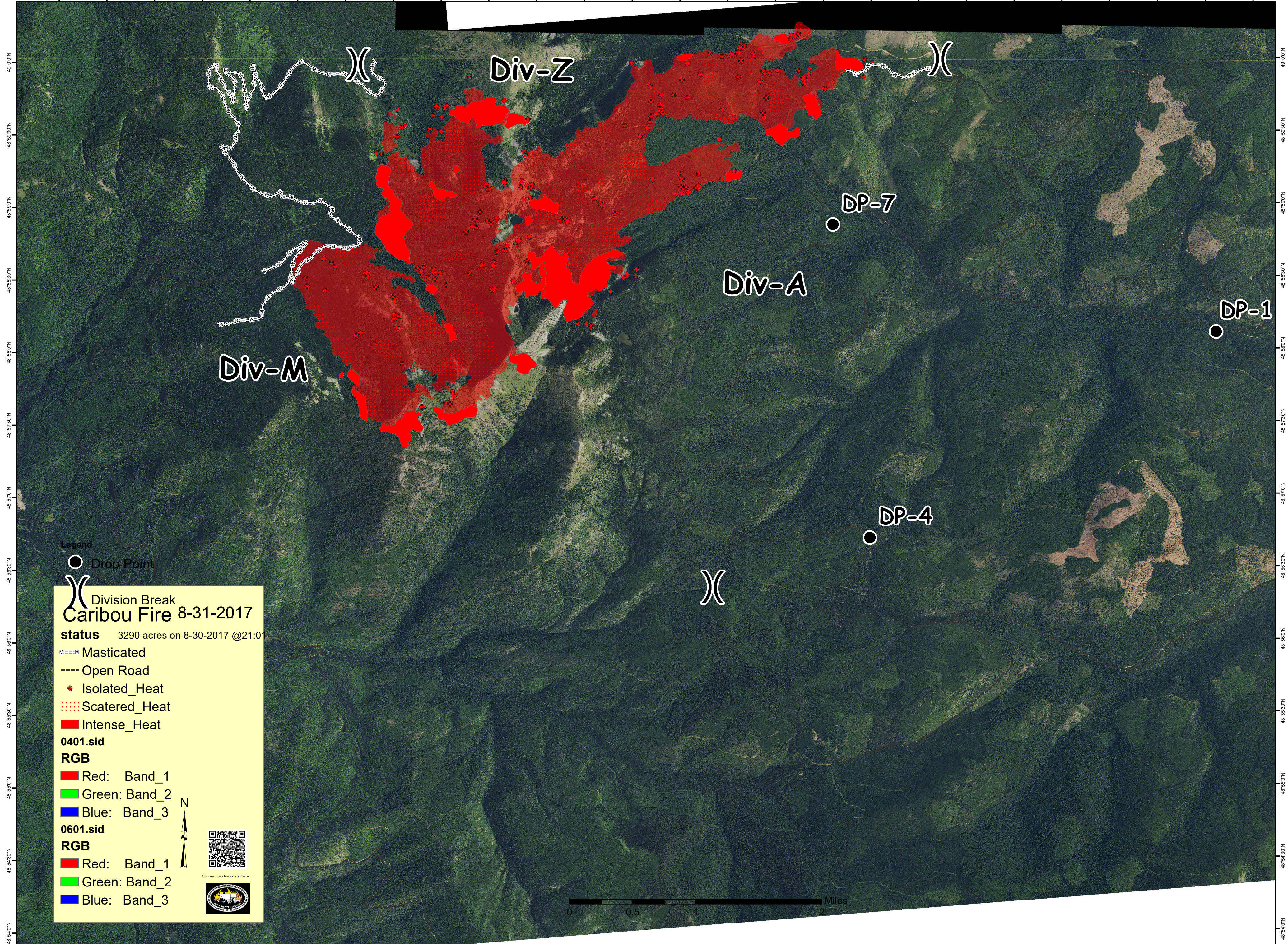


115°29'30"W 115°29'00"W 115°28'30"W 115°28'00"W 115°27'30"W 115°27'00"W 115°26'30"W 115°26'00"W 115°25'30"W 115°25'00"W 115°24'30"W 115°24'00"W 115°23'30"W 115°23'00"W 115°22'30"W 115°22'00"W 115°21'30"W 115°21'00"W 115°20'30"W 115°20'00"W 115°19'30"W 115°19'00"W 115°18'30"W 115°18'00"W 115°17'30"W 115°17'00"W



Legend

- Drop Point
- ⌘ Division Break

Caribou Fire 8-31-2017
status 3290 acres on 8-30-2017 @21:01

0401.sid
RGB
 ■ Red: Band_1
 ■ Green: Band_2
 ■ Blue: Band_3

0601.sid
RGB
 ■ Red: Band_1
 ■ Green: Band_2
 ■ Blue: Band_3

■■■ Masticated
 - - - - Open Road
 * Isolated_Heat
 ■■■ Scatered_Heat
 ■ Intense_Heat

N

 Choose map from date folder



115°29'30"W 115°29'00"W 115°28'30"W 115°28'00"W 115°27'30"W 115°27'00"W 115°26'30"W 115°26'00"W 115°25'30"W 115°25'00"W 115°24'30"W 115°24'00"W 115°23'30"W 115°23'00"W 115°22'30"W 115°22'00"W 115°21'30"W 115°21'00"W 115°20'30"W 115°20'00"W 115°19'30"W 115°19'00"W 115°18'30"W 115°18'00"W 115°17'30"W 115°17'00"W