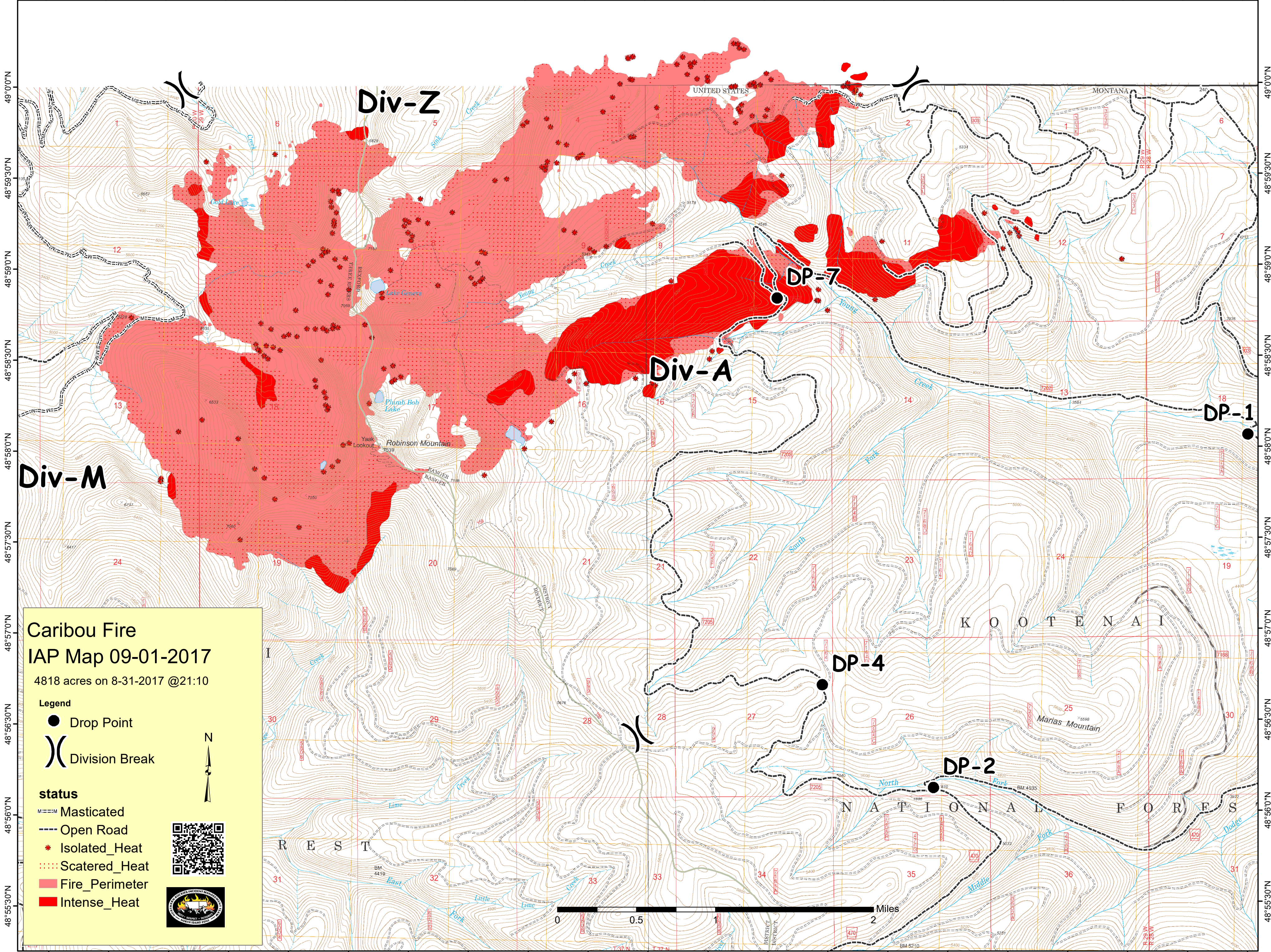


115°27'30"W 115°27'0"W 115°26'30"W 115°26'0"W 115°25'30"W 115°25'0"W 115°24'30"W 115°24'0"W 115°23'30"W 115°23'0"W 115°22'30"W 115°22'0"W 115°21'30"W 115°21'0"W 115°20'30"W 115°20'0"W 115°19'30"W 115°19'0"W 115°18'30"W 115°18'0"W 115°17'30"W



Caribou Fire
IAP Map 09-01-2017

4818 acres on 8-31-2017 @21:10

- Legend**
- Drop Point
 -) Division Break

- status**
- Masticated
 - Open Road
 - * Isolated_Heat
 - ⋯ Scatered_Heat
 - Fire_Perimeter
 - Intense_Heat

