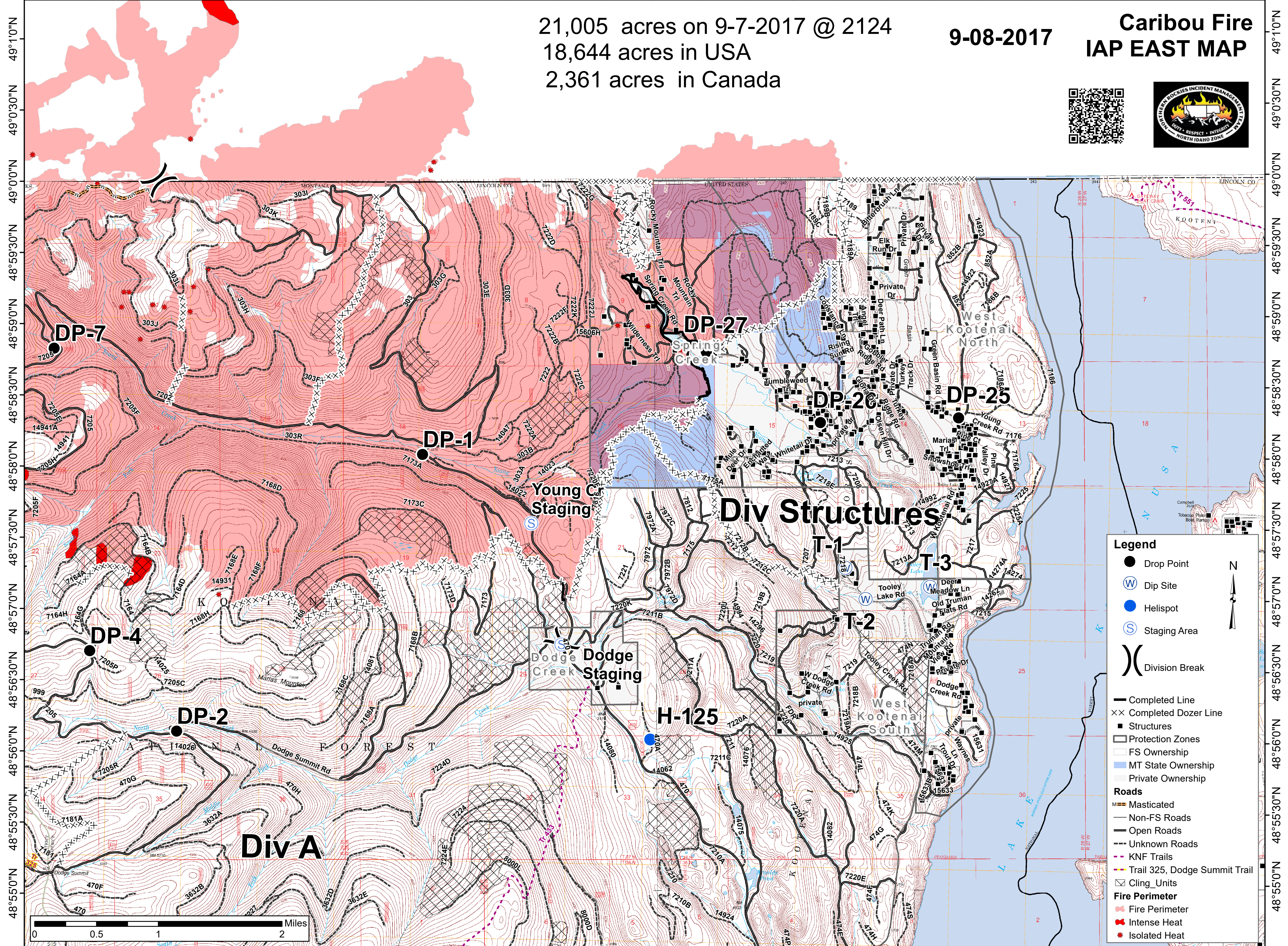


115°21'30"W 115°20'30"W 115°19'30"W 115°18'30"W 115°17'30"W 115°16'30"W 115°15'30"W 115°14'30"W 115°13'30"W 115°12'30"W 115°11'30"W 115°10'30"W 115°9'30"W 115°8'30"W



21,005 acres on 9-7-2017 @ 2124
18,644 acres in USA
2,361 acres in Canada

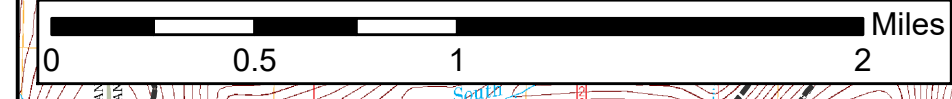
9-08-2017

Caribou Fire IAP EAST MAP



Legend

- Drop Point
- ⊙ Dip Site
- Helispot
- ⊙ Staging Area
- () Division Break
- Completed Line
- XX Completed Dozer Line
- Structures
- Protection Zones
- FS Ownership
- MT State Ownership
- Private Ownership
- Roads**
- ▬ Masticated
- Non-FS Roads
- Open Roads
- Unknown Roads
- - - KNF Trails
- Trail 325, Dodge Summit Trail
- ⊠ Cling_Units
- Fire Perimeter**
- Fire Perimeter
- Intense Heat
- Isolated Heat



115°21'0"W 115°20'0"W 115°19'0"W 115°18'0"W 115°17'0"W 115°16'0"W 115°15'0"W 115°14'0"W 115°13'0"W 115°12'0"W 115°11'0"W 115°10'0"W 115°9'0"W