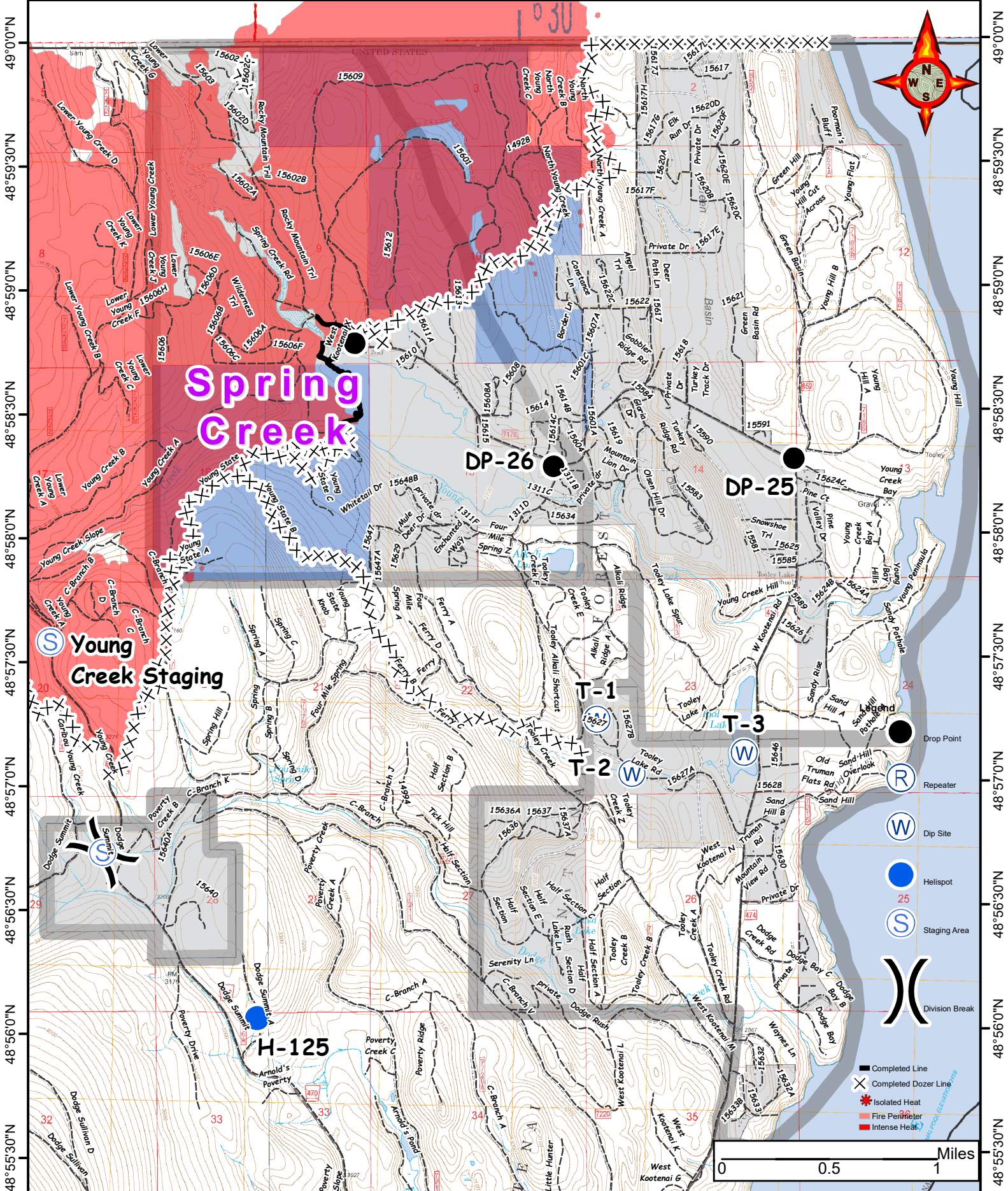


Caribou IAP 9-8-2017

Structure Protection



115°16'0"W 115°15'30"W 115°15'0"W 115°14'30"W 115°14'0"W 115°13'30"W 115°13'0"W 115°12'30"W 115°12'0"W 115°11'30"W 115°11'0"W



115°16'0"W 115°15'30"W 115°15'0"W 115°14'30"W 115°14'0"W 115°13'30"W 115°13'0"W 115°12'30"W 115°12'0"W 115°11'30"W 115°11'0"W