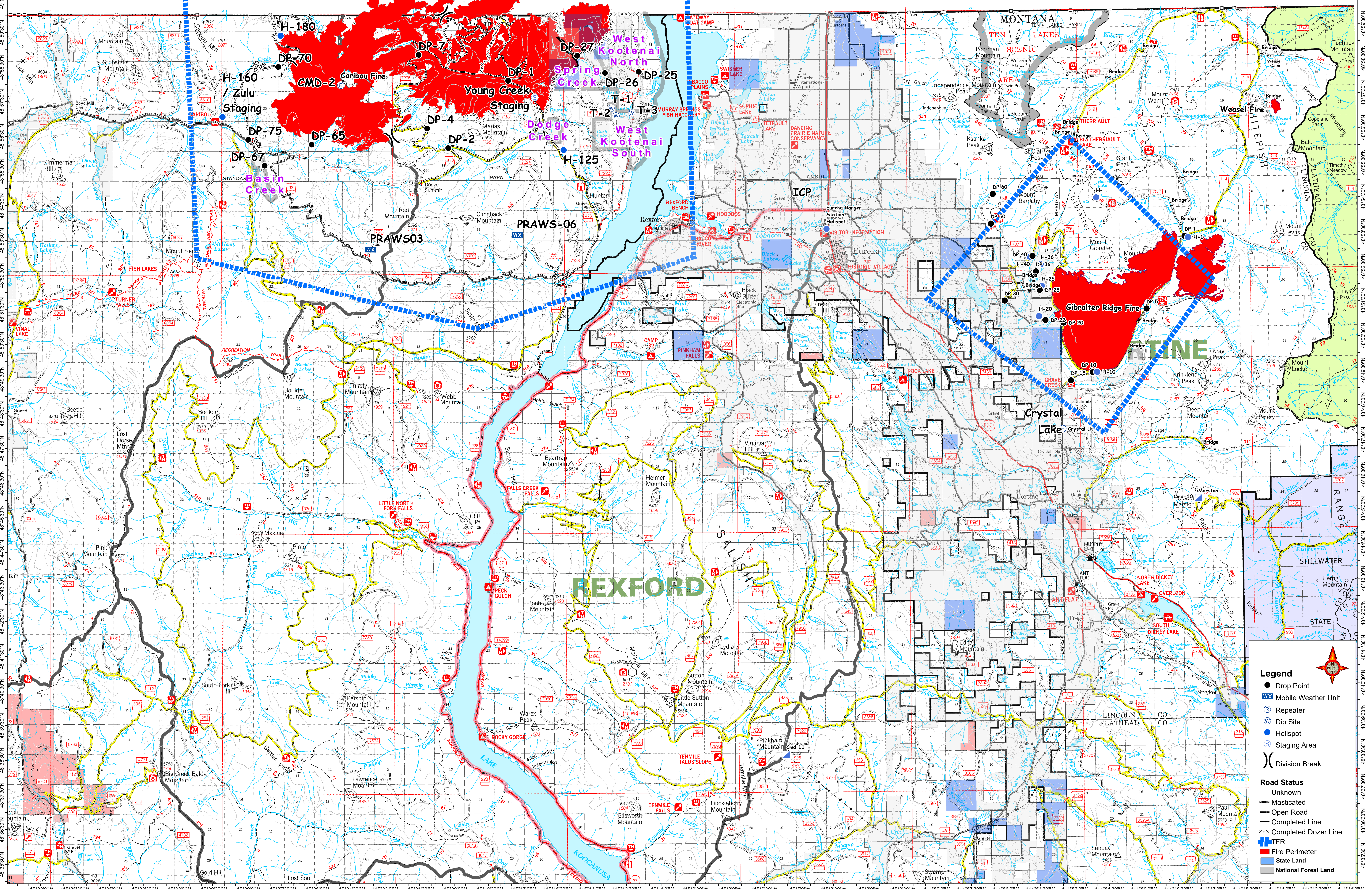


# Fire Area Map September 8, 2017



**Legend**

- Drop Point
- Ⓜ Mobile Weather Unit
- Ⓡ Repeater
- Ⓢ Dip Site
- Ⓣ Helispot
- Ⓤ Staging Area
- Ⓥ Division Break

**Road Status**

- Masticated
- Open Road
- Completed Line
- ⓧ Completed Dozer Line
- ⓧ+TFR
- Fire Perimeter
- State Land
- National Forest Land

