

115°32'30"W 115°31'30"W 115°30'30"W 115°29'30"W 115°28'30"W 115°27'30"W 115°26'30"W 115°25'30"W 115°24'30"W 115°23'30"W 115°22'30"W 115°21'30"W 115°20'30"W

# Caribou Fire IAP WEST MAP

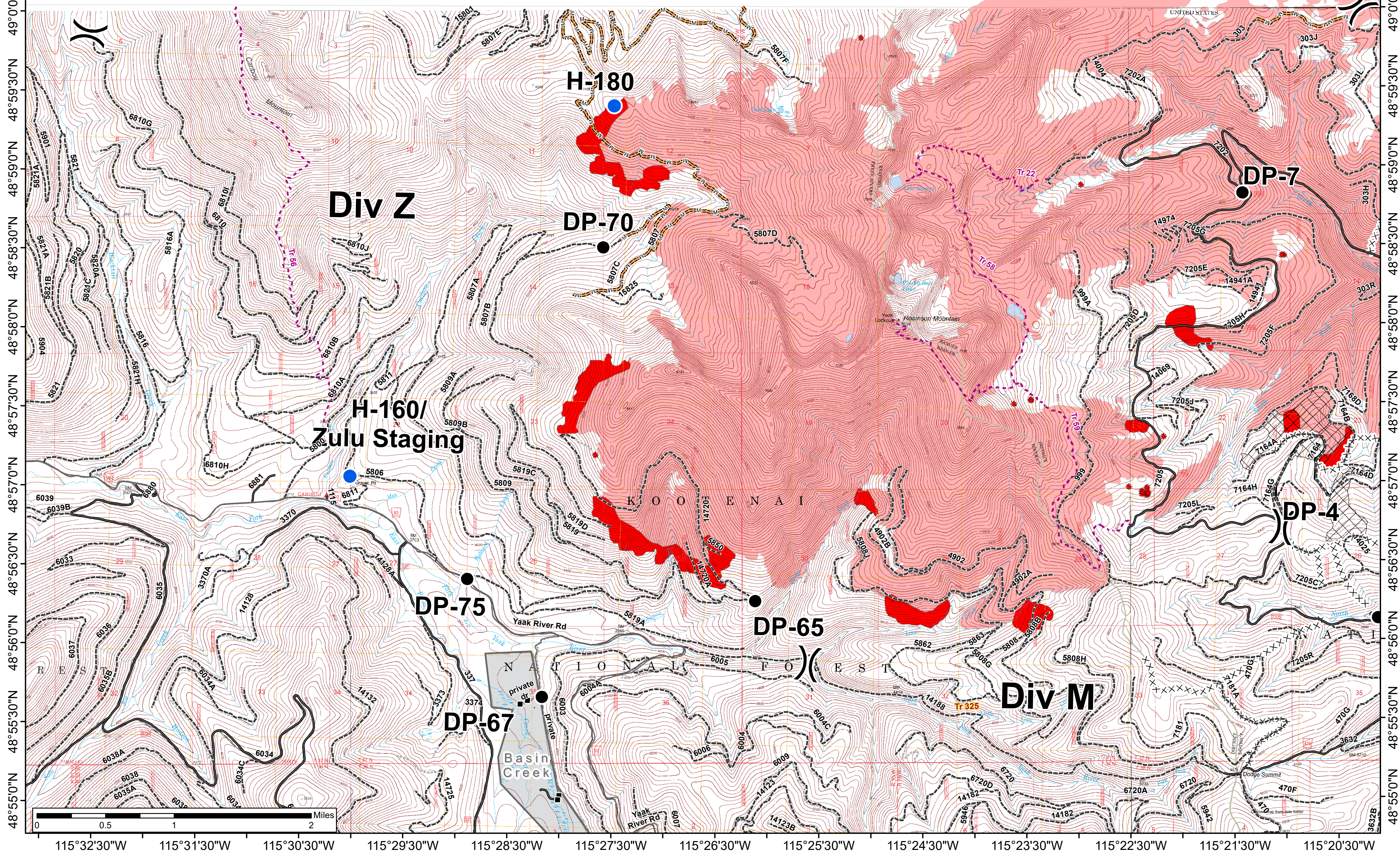
## 9-10-2017



21,566 acres on 9-9-2017 @ 0028  
19,198 acres in USA  
2,368 acres in Canada

### Legend

● Drop Point	■ Structures	<b>Roads</b>	Fire Perimeter
⊙ Dip Site	□ Protection Zones	Masticated	FS Ownership
● Helispot	Unknown Roads	Non-FS Roads	MT State Ownership
⊙ Staging Area	Completed Line	Open Roads	Private Ownership
Division Break	Completed Dozer Line	Unknown Roads	
	KNF Trails	Trail 325, Dodge Summit Trail	
	Cling Units	Isolated Heat	
	Intense Heat		



49°10'N  
49°0'30"N  
49°0'0"N  
48°59'30"N  
48°59'0"N  
48°58'30"N  
48°58'0"N  
48°57'30"N  
48°57'0"N  
48°56'30"N  
48°56'0"N  
48°55'30"N  
48°55'0"N

49°10'N  
49°0'30"N  
49°0'0"N  
48°59'30"N  
48°59'0"N  
48°58'30"N  
48°58'0"N  
48°57'30"N  
48°57'0"N  
48°56'30"N  
48°56'0"N  
48°55'30"N  
48°55'0"N

115°32'30"W 115°31'30"W 115°30'30"W 115°29'30"W 115°28'30"W 115°27'30"W 115°26'30"W 115°25'30"W 115°24'30"W 115°23'30"W 115°22'30"W 115°21'30"W 115°20'30"W