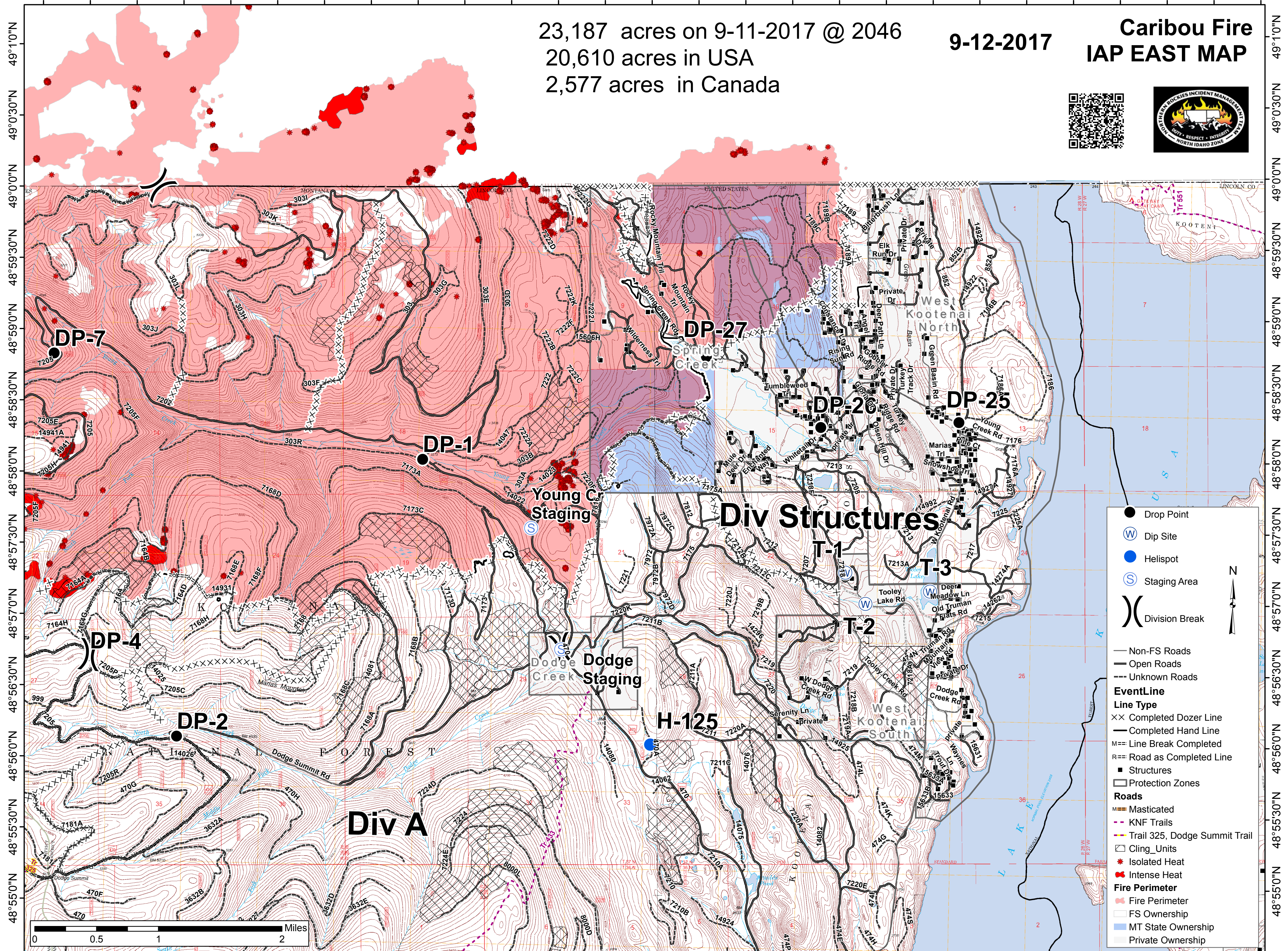


115°21'30"W 115°20'30"W 115°19'30"W 115°18'30"W 115°17'30"W 115°16'30"W 115°15'30"W 115°14'30"W 115°13'30"W 115°12'30"W 115°11'30"W 115°10'30"W 115°9'30"W 115°8'30"W



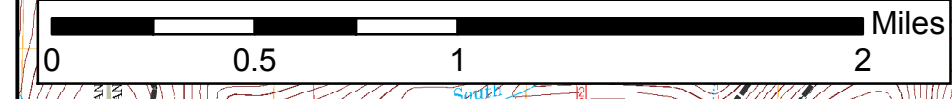
23,187 acres on 9-11-2017 @ 2046
20,610 acres in USA
2,577 acres in Canada

9-12-2017

Caribou Fire IAP EAST MAP



- Drop Point
- Ⓜ Dip Site
- Helispot
- Ⓢ Staging Area
- () Division Break
- Non-FS Roads
- Open Roads
- - - Unknown Roads
- EventLine**
- Line Type**
- XX Completed Dozer Line
- Completed Hand Line
- M= Line Break Completed
- R= Road as Completed Line
- Structures
- Protection Zones
- Roads**
- M Masticated
- - - KNF Trails
- Trail 325, Dodge Summit Trail
- Cling_Units
- Isolated Heat
- Intense Heat
- Fire Perimeter
- Fire Perimeter
- FS Ownership
- MT State Ownership
- Private Ownership



115°21'0"W 115°20'0"W 115°19'0"W 115°18'0"W 115°17'0"W 115°16'0"W 115°15'0"W 115°14'0"W 115°13'0"W 115°12'0"W 115°11'0"W 115°10'0"W 115°9'0"W