

# INFORMATION MAP




## Caribou Fire

MT-KNF-174

09/12/2017

<ul style="list-style-type: none"><li>Lincoln Structures</li><li>Fire Perimeter</li><li>Water Bodies</li><li>Closure Area</li><li>International Border</li></ul>	<ul style="list-style-type: none"><li>County</li><li>Other State</li><li>Private</li><li>State Highway</li><li>Converted to Trail</li></ul>	<ul style="list-style-type: none"><li>Decommissioned</li><li>Impassable to Motorized Vehicles</li><li>Restricted/Gated Administrative Use</li><li>Barriered No Admin Use</li><li>Open</li><li>Undetermined</li></ul>	<ul style="list-style-type: none"><li>KNF Trails</li><li>Trail 325, Dodge Summit Trail</li><li>Completed Dozer Line</li><li>Completed Hand Line</li><li>Line Break Completed</li><li>Road as Completed Line</li></ul>	<ul style="list-style-type: none"><li>US Contours - 40 ft</li><li>Canada Contours - 40 ft</li><li>Canada Roads</li><li>Closed Roads &amp; Trails</li></ul>	<ul style="list-style-type: none"><li>Protection Zones</li><li>Basin Creek</li><li>Dodge Creek</li><li>Spring Creek</li><li>West Kootenai North</li><li>West Kootenai South</li></ul>
--	---	--	---	--	---

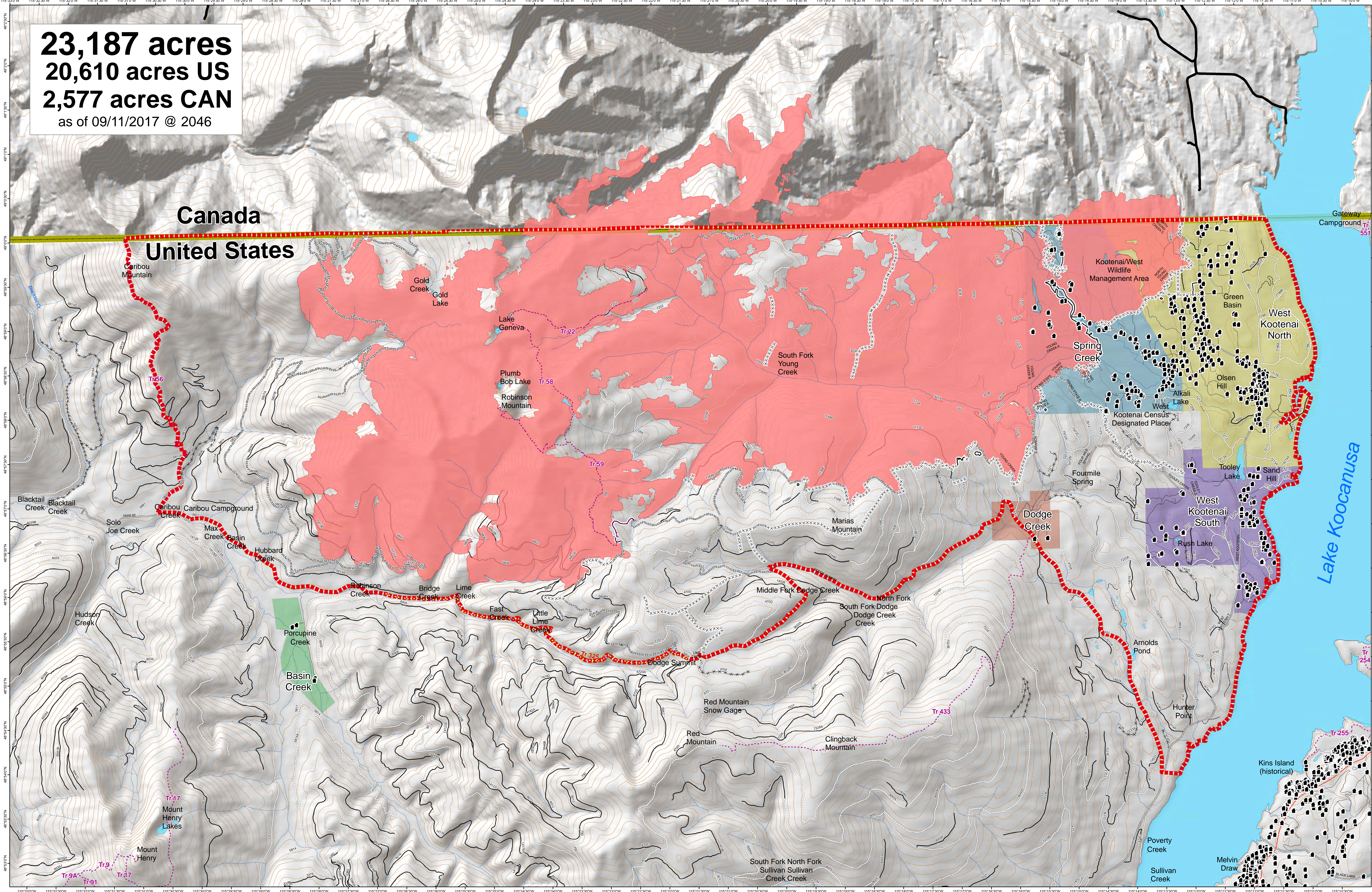
N



0 1 2 3 Miles

Projection: UTM Zone 11N, Datum: NAD83

**23,187 acres**  
**20,610 acres US**  
**2,577 acres CAN**  
as of 09/11/2017 @ 2046



**Canada**  
**United States**

Lake Kootenusa

