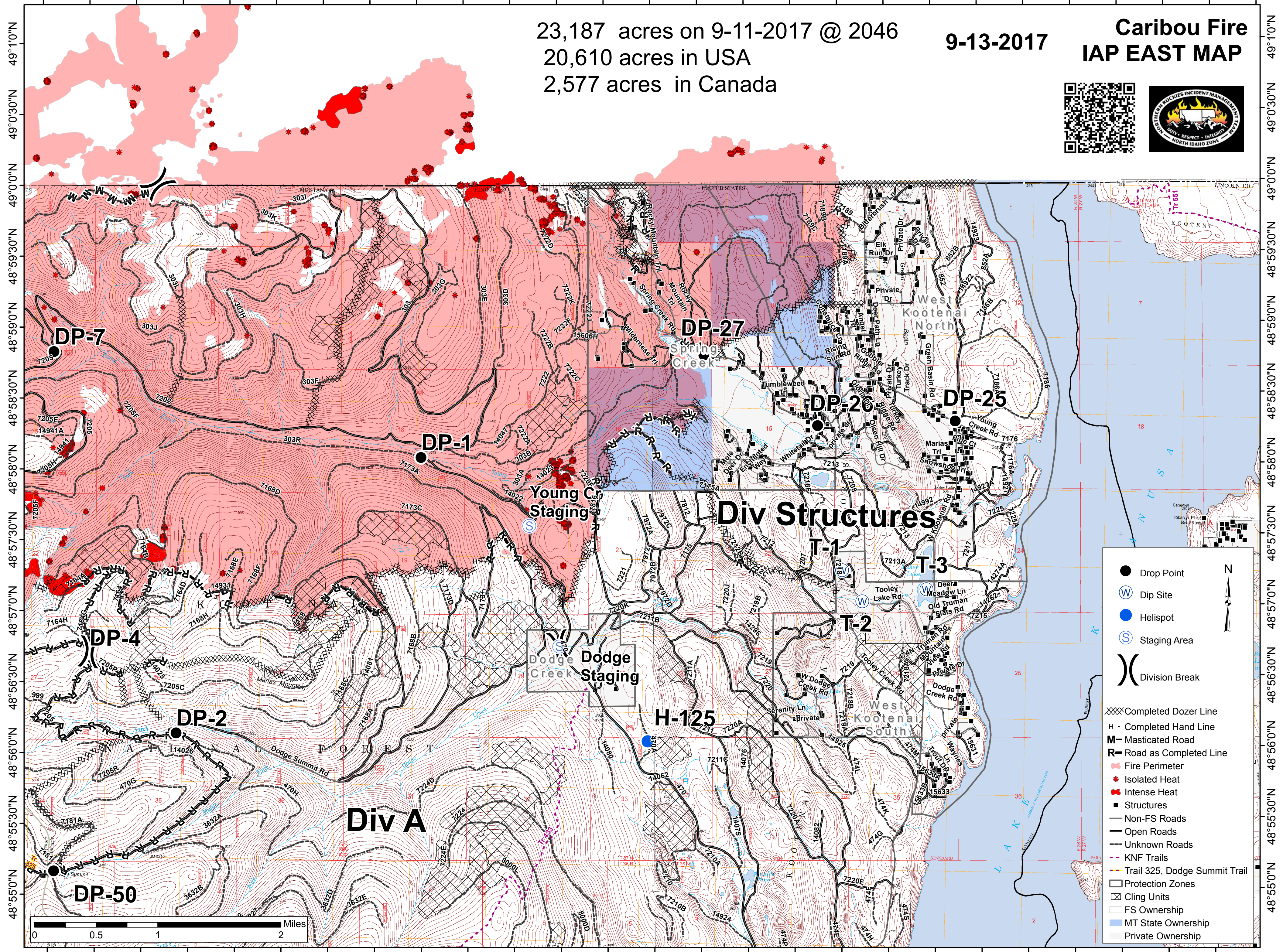


115°21'30"W 115°20'30"W 115°19'30"W 115°18'30"W 115°17'30"W 115°16'30"W 115°15'30"W 115°14'30"W 115°13'30"W 115°12'30"W 115°11'30"W 115°10'30"W 115°9'30"W 115°8'30"W



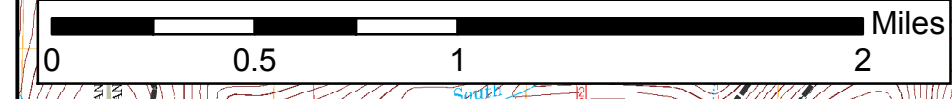
23,187 acres on 9-11-2017 @ 2046
20,610 acres in USA
2,577 acres in Canada

9-13-2017

Caribou Fire IAP EAST MAP



- Drop Point
- Ⓜ Dip Site
- Helispot
- Ⓢ Staging Area
- () Division Break
- XXXX Completed Dozer Line
- H - Completed Hand Line
- M - Masticated Road
- R - Road as Completed Line
- Fire Perimeter
- ★ Isolated Heat
- ★ Intense Heat
- Structures
- Non-FS Roads
- Open Roads
- Unknown Roads
- - - KNF Trails
- Trail 325, Dodge Summit Trail
- ▭ Protection Zones
- ▭ Cling Units
- ▭ FS Ownership
- ▭ MT State Ownership
- ▭ Private Ownership



49°10'N
49°0'30"N
49°0'0"N
48°59'30"N
48°59'0"N
48°58'30"N
48°58'0"N
48°57'30"N
48°57'0"N
48°56'30"N
48°56'0"N
48°55'30"N
48°55'0"N

49°10'N
49°0'30"N
49°0'0"N
48°59'30"N
48°59'0"N
48°58'30"N
48°58'0"N
48°57'30"N
48°57'0"N
48°56'30"N
48°56'0"N
48°55'30"N
48°55'0"N

115°21'0"W 115°20'0"W 115°19'0"W 115°18'0"W 115°17'0"W 115°16'0"W 115°15'0"W 115°14'0"W 115°13'0"W 115°12'0"W 115°11'0"W 115°10'0"W 115°9'0"W