

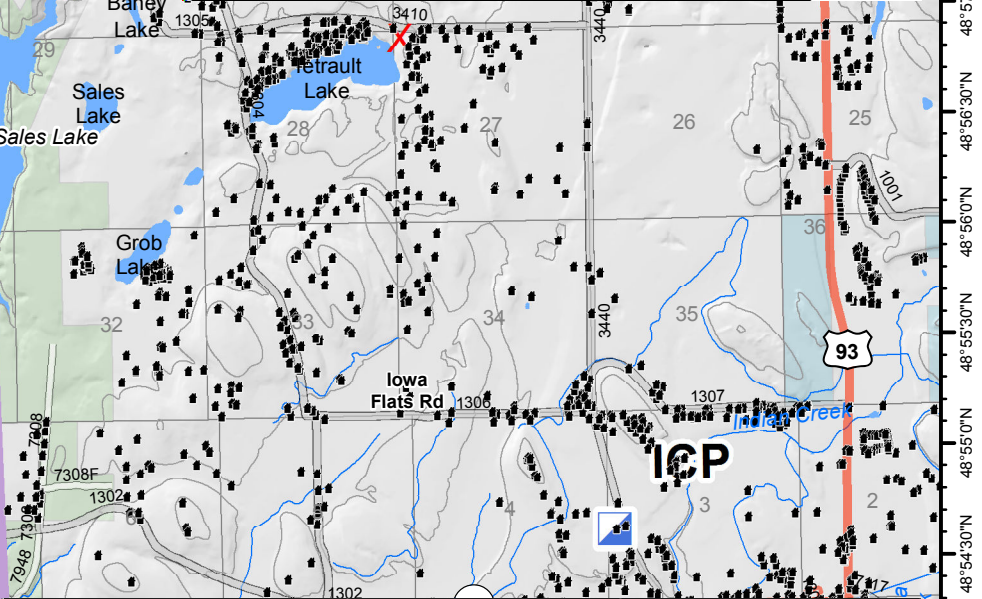
# Air Ops Map

## Caribou Fire MT-KNF-174

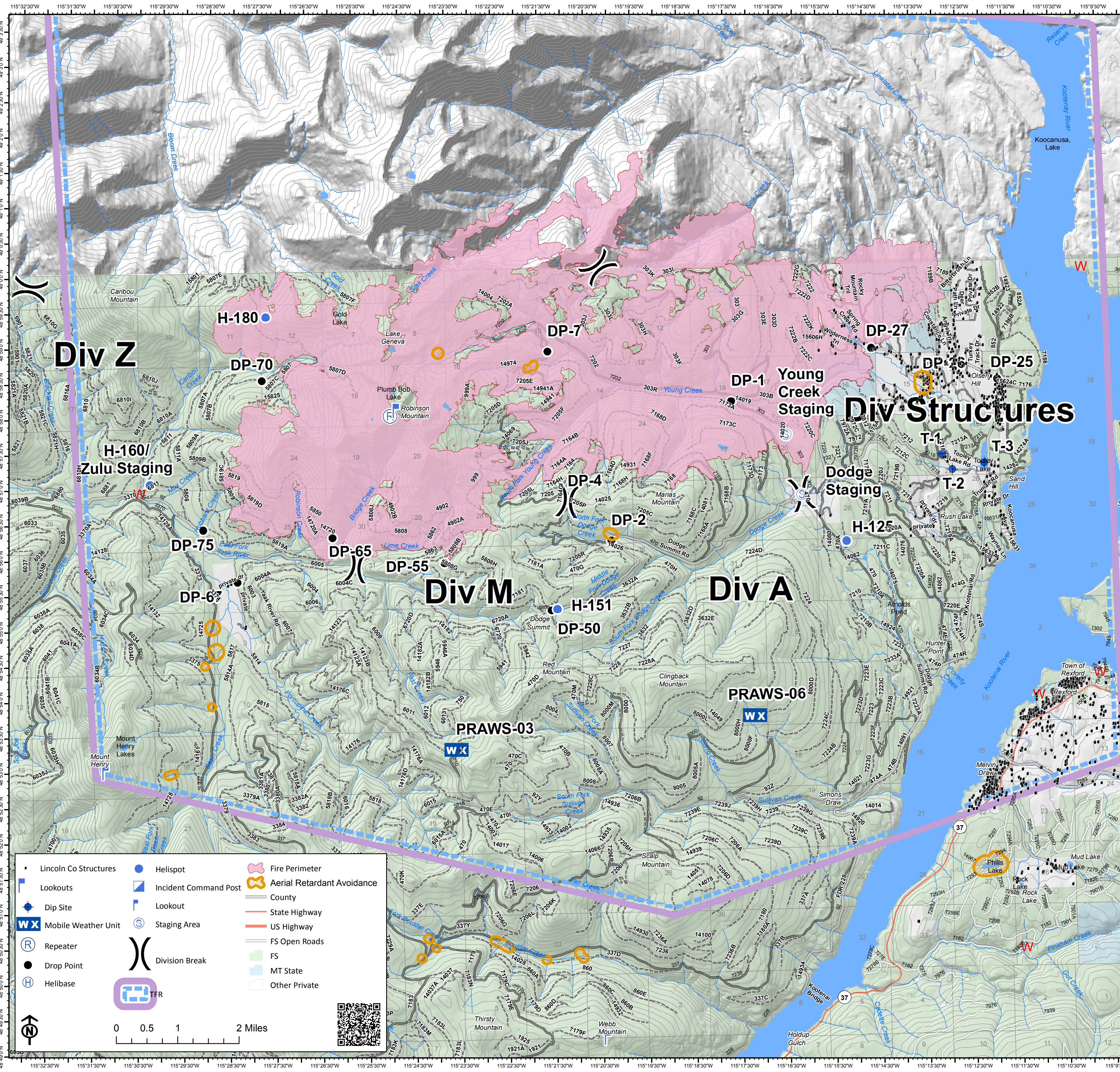
09/14/2017

24,127 acres  
as of 09/13 2018 IR

FREQUENCIES	AM	FM	TONE
A2A - TFR A-19	119.35001		
A2A - Rotorwing	25.6000		
A2A - NAVCANADA	126.7000		
A2G - Primary		RX	167.9000
A-38		TX	167.9000
A2G - Secondary		RX	169.3625
A-77		TX	169.3625
Air Guard		RX	168.6250
Deck		TX	168.6250
			110.9
Unicom Crystal Lk	122.7000		



Caribou Fire Lat/Long Table		
Point	Lat	Long
Airport	48° 58.03' N	115° 17.480' W
Repeater CMR-2	48° 57.959' N	115° 24.820' W
DP-1	48° 58.069' N	115° 17.480' W
DP-2	48° 56.134' N	115° 20.118' W
DP-4	48° 56.702' N	115° 21.041' W
DP-7	48° 58.827' N	115° 21.406' W
DP-25	48° 58.305' N	-115° 11.758' W
DP-26	48° 58.277' N	-115° 13.232' W
DP-27	48° 58.779' N	-115° 14.446' W
DP-50	48° 55.165' N	-115° 21.433' W
DP-55	48° 55.863' N	-115° 23.708' W
DP-67	48° 55.647' N	-115° 28.163' W
DP-70	48° 58.493' N	115° 27.559' W
DP-75	48° 56.395' N	115° 28.878' W
Helispot H-125	48° 56.058' N	115° 15.068' W
Helispot H-151	48° 55.180' N	115° 21.308' W
H-160 / Zulu Staging	48° 57.049' N	-115° 30.002' W
Helispot H-180	48° 59.39' N	115° 27.48' W
ICP	48° 54.650' N	115° 5.040' W
T-1 Dip	48° 57.256' N	115° 12.976' W
T-2 Dip	48° 57.037' N	115° 12.763' W
T-3 Dip	48° 57.119' N	115° 12.074' W
Young Creek Staging	48° 57.582' N	115° 16.324' W



- Lincoln Co Structures
- Lookouts
- Dip Site
- Mobile Weather Unit
- Repeater
- Drop Point
- Helibase
- Helispot
- Incident Command Post
- Lookout
- Staging Area
- Division Break
- Fire Perimeter
- Aerial Retardant Avoidance
- County
- State Highway
- US Highway
- FS Open Roads
- FS
- MT State
- Other Private

0 0.5 1 2 Miles

### Div Structures

### Dodge Staging

### Young Creek Staging

### Div M

### Div A

### PRAWS-06

### PRAWS-03

### WX

### WX

### WX

### WX

### WX

### WX