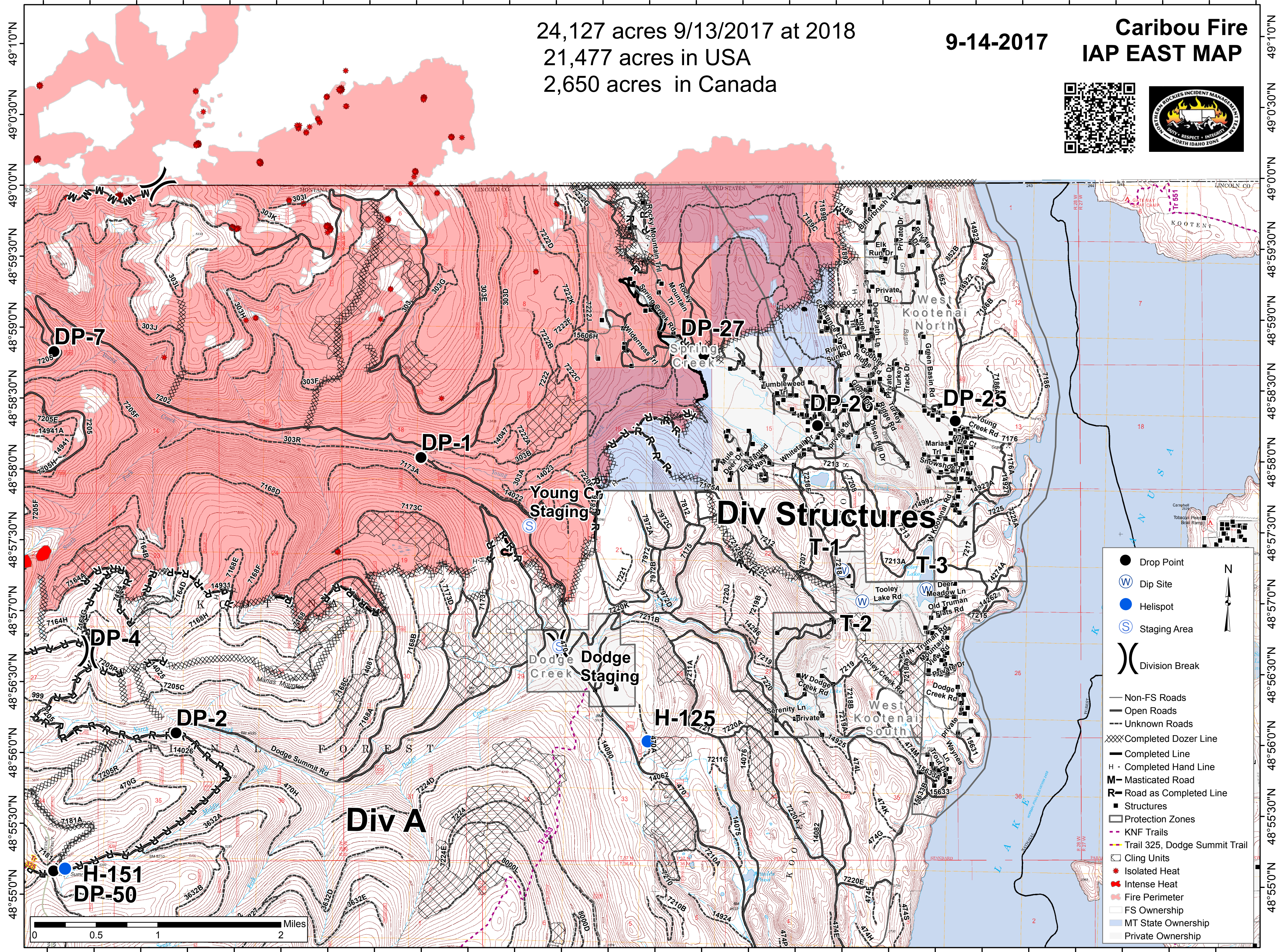


115°21'30"W 115°20'30"W 115°19'30"W 115°18'30"W 115°17'30"W 115°16'30"W 115°15'30"W 115°14'30"W 115°13'30"W 115°12'30"W 115°11'30"W 115°10'30"W 115°9'30"W 115°8'30"W



24,127 acres 9/13/2017 at 2018
21,477 acres in USA
2,650 acres in Canada

9-14-2017

Caribou Fire IAP EAST MAP



DP-7

DP-1

DP-27

DP-26

DP-25

DP-4

DP-2

H-151
DP-50

Young C
Staging

Dodge
Creek
Dodge
Staging

Div Structures

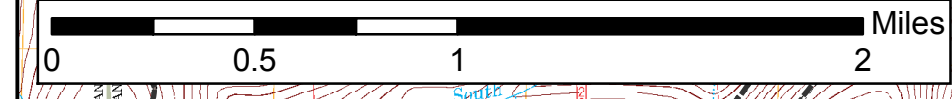
H-125

T-1

T-2

T-3

Div A



Legend

- Drop Point
- ⊙ Dip Site
- Helispot
- ⊙ Staging Area
- ⌋ Division Break
- Non-FS Roads
- Open Roads
- - - Unknown Roads
- XXXX Completed Dozer Line
- Completed Line
- H - Completed Hand Line
- M - Masticated Road
- R - Road as Completed Line
- Structures
- Protection Zones
- - - KNF Trails
- Trail 325, Dodge Summit Trail
- Cling Units
- ★ Isolated Heat
- ★ Intense Heat
- ★ Fire Perimeter
- FS Ownership
- MT State Ownership
- Private Ownership



49°10'N
49°0'30'N
49°0'0'N
48°59'30'N
48°59'0'N
48°58'30'N
48°58'0'N
48°57'30'N
48°57'0'N
48°56'30'N
48°56'0'N
48°55'30'N
48°55'0'N

49°10'N
49°0'30'N
49°0'0'N
48°59'30'N
48°59'0'N
48°58'30'N
48°58'0'N
48°57'30'N
48°57'0'N
48°56'30'N
48°56'0'N
48°55'30'N
48°55'0'N

115°21'0"W 115°20'0"W 115°19'0"W 115°18'0"W 115°17'0"W 115°16'0"W 115°15'0"W 115°14'0"W 115°13'0"W 115°12'0"W 115°11'0"W 115°10'0"W 115°9'0"W