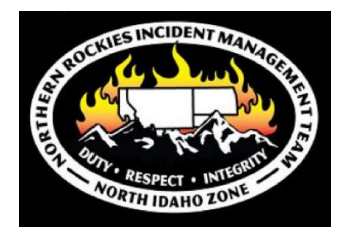


115°32'30"W 115°31'30"W 115°30'30"W 115°29'30"W 115°28'30"W 115°27'30"W 115°26'30"W 115°25'30"W 115°24'30"W 115°23'30"W 115°22'30"W 115°21'30"W 115°20'30"W

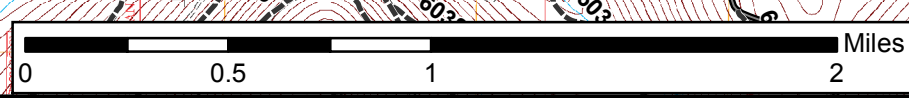
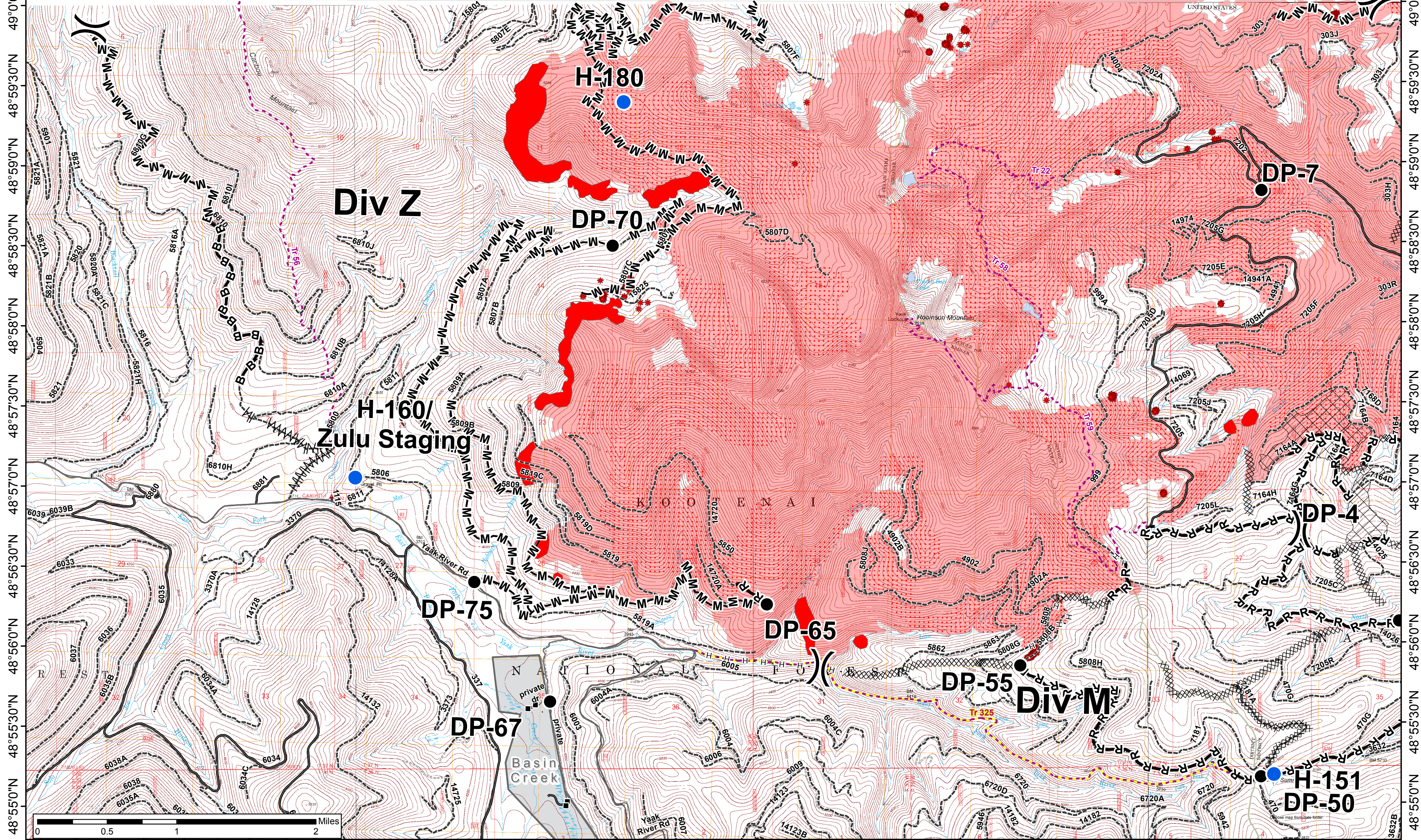
Caribou Fire IAP WEST MAP

9-14-2017



24,127 acres on 9-13-2017 at 2018
21,477 acres in USA
2,650 acres in Canada

- Drop Point
- ⊙ Dip Site
- Helispot
- ⊙ Staging Area
- ⌋ Division Break
- Structures
- Protection Zones
- Non-FS Roads
- Open Roads
- - - Unknown Roads
- - - KNF Trails
- Trail 325, Dodge Summit Trail
- ⊠ Cling_Units
- ★ Isolated Heat
- ★ Intense Heat
- ★ Fire Perimeter
- FS Ownership
- MT State Ownership
- Private Ownership
- XXXXX Completed Dozer Line
- Completed Line
- 〰 Shaded Fuel Break
- B-B Brushed Work Completed on Road
- H-H Completed Hand Line
- M-M Masticated Road
- R-R Road as Completed Line



49°10'N 49°0'30'N 49°0'0'N 48°59'30'N 48°59'0'N 48°58'30'N 48°58'0'N 48°57'30'N 48°57'0'N 48°56'30'N 48°56'0'N 48°55'30'N 48°55'0'N 115°32'30"W 115°31'30"W 115°30'30"W 115°29'30"W 115°28'30"W 115°27'30"W 115°26'30"W 115°25'30"W 115°24'30"W 115°23'30"W 115°22'30"W 115°21'30"W 115°20'30"W