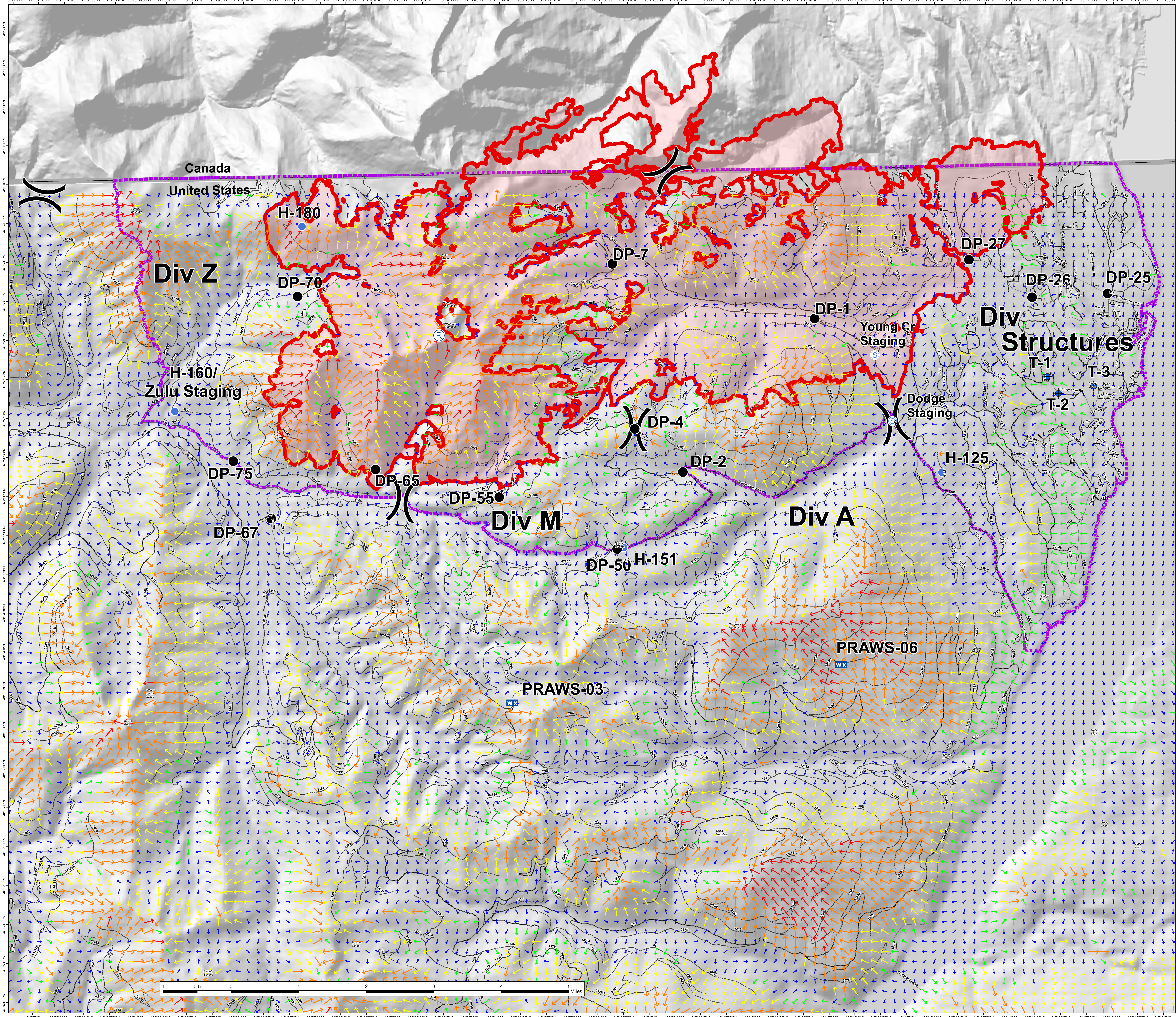


Caribou Diurnal Wind 1500 hrs 9/13/17

MT-KNF-174
23,210 acres
20,633 acres (US)
2,577 acres (CAN)
as of 9/11



Wind Speed (mph)

- 3.93 - 4.92
- 2.95 - 3.92
- 1.97 - 2.94
- 0.98 - 1.96
- 0.00 - 0.97

- + Dip Site
- Drop Point
- Helispot
- WX Mobile Weather Unit
- R Repeater
- S Staging Area
-) Division Break

- Closure Area
- International Border
- Fire Perimeter

