

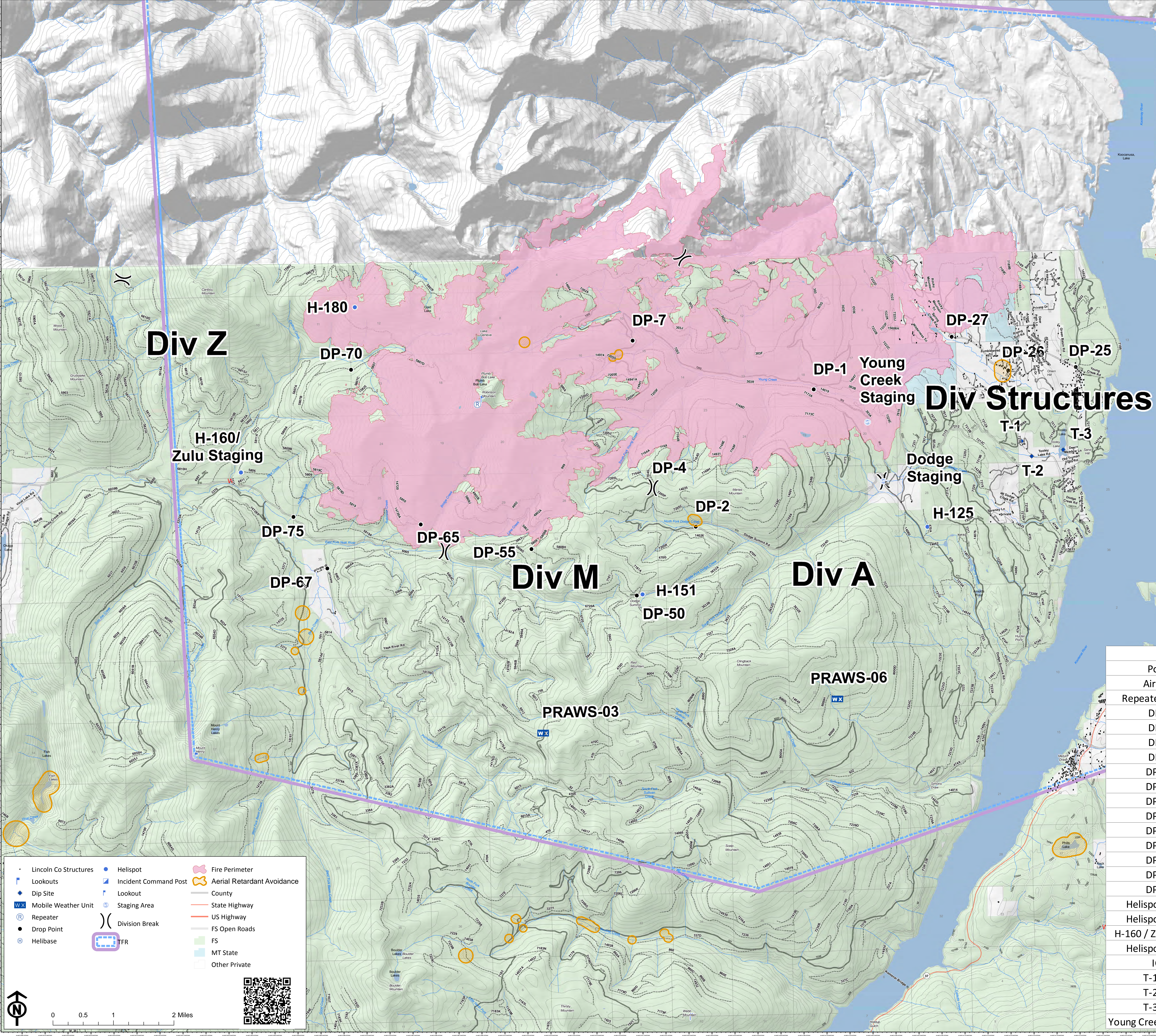
Air Ops Map

Caribou Fire
MT-KNF-174

09/15/2017

24,127 acres
as of 09/13 2018 IR

FREQUENCIES	AM	FM	ZONE
A2A - TFR A-19	119.350012		
A2A - Rotorwing	5.6000		
A2A - NAVCANADA	126.7000		
A-38		RX 167.900016 TX 7.9000	
A2G - Primary		RX 169.362516 TX 9.3625	
A-77		RX 168.625016 TX 8.6250	110.9
Air Guard		RX/TX 163.1000	
Unicom Crystal Lk	122.7000		



Div Structures

Lincoln Co Structures	Helispot	Fire Perimeter
Lookouts	Incident Command Post	Aerial Retardant Avoidance
Dip Site	Lookout	County
Mobile Weather Unit	Staging Area	State Highway
Repeater	Division Break	US Highway
Drop Point	TFR	FS Open Roads
Helibase		FS
		MT State
		Other Private

Caribou Fire Lat/Long Table		
Point	Lat	Long
Airport	48° 58.03' N	115° 17.480' W
Repeater CMR-2	48° 57.959' N	115° 24.820' W
DP-1	48° 58.069' N	115° 17.480' W
DP-2	48° 56.134' N	115° 20.118' W
DP-4	48° 56.702' N	115° 21.041' W
DP-7	48° 58.827' N	115° 21.406' W
DP-25	48° 58.305' N	-115° 11.758'
DP-26	48° 58.277' N	-115° 13.232'
DP-27	48° 58.779' N	-115° 14.446'
DP-50	48° 55.165' N	-115° 21.433'
DP-55	48° 55.863' N	-115° 23.708'
DP-65	48° 56.250' N	115° 26.108' W
DP-67	48° 55.647' N	-115° 28.163'
DP-70	48° 58.493' N	115° 27.559' W
DP-75	48° 56.395' N	115° 28.878' W
Helispot H-125	48° 56.058' N	115° 15.068' W
Helispot H-151	48° 55.180' N	115° 21.308' W
H-160 / Zulu Staging	48° 57.049' N	-115° 30.002'
Helispot H-180	48° 59.39' N	115° 27.48' W
ICP	48° 54.650' N	115° 5.040' W
T-1 Dip	48° 57.256' N	115° 12.976' W
T-2 Dip	48° 57.037' N	115° 12.763' W
T-3 Dip	48° 57.119' N	115° 12.074' W
Young Creek Staging	48° 57.582' N	115° 16.324' W

0 0.5 1 2 Miles