

115°32'30"W 115°31'30"W 115°30'30"W 115°29'30"W 115°28'30"W 115°27'30"W 115°26'30"W 115°25'30"W 115°24'30"W 115°23'30"W 115°22'30"W 115°21'30"W 115°20'30"W

# Caribou Fire IAP WEST MAP

## 9-16-2017

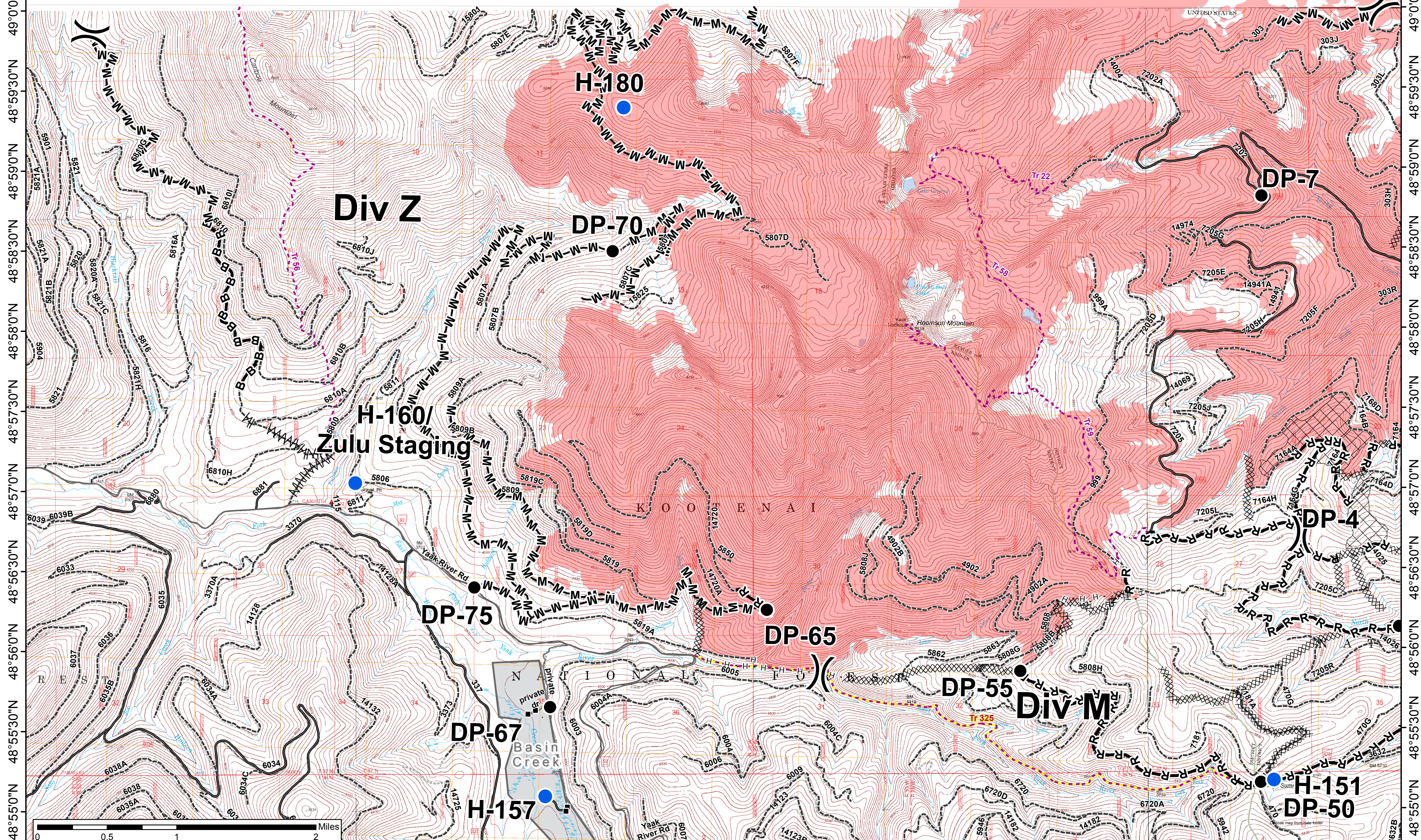


24,206 acres on 9-14-2017  
21,534 acres in USA  
2,672 acres in Canada

- Drop Point
- Ⓜ Dip Site
- Helispot
- Ⓢ Staging Area
- ⎓ Division Break
- Non-FS Roads
- Open Roads
- - - Unknown Roads
- - - KNF Trails
- Trail 325, Dodge Summit Trail
- ⊠ Cling\_Units
- FS Ownership
- MT State Ownership
- Private Ownership
- XXXXX Completed Dozer Line
- Completed Line
- ▨ Shaded Fuel Break
- B-B Brushed Work Completed on Road
- H - H Completed Hand Line
- M-M Masticated Road
- R-R Road as Completed Line
- Fire Perimeter



- Structures
- Protection Zones



49°10'N 49°0'30'N 49°0'0'N 48°59'30'N 48°59'0'N 48°58'30'N 48°58'0'N 48°57'30'N 48°57'0'N 48°56'30'N 48°56'0'N 48°55'30'N 48°55'0'N

115°32'30"W 115°31'30"W 115°30'30"W 115°29'30"W 115°28'30"W 115°27'30"W 115°26'30"W 115°25'30"W 115°24'30"W 115°23'30"W 115°22'30"W 115°21'30"W 115°20'30"W

