

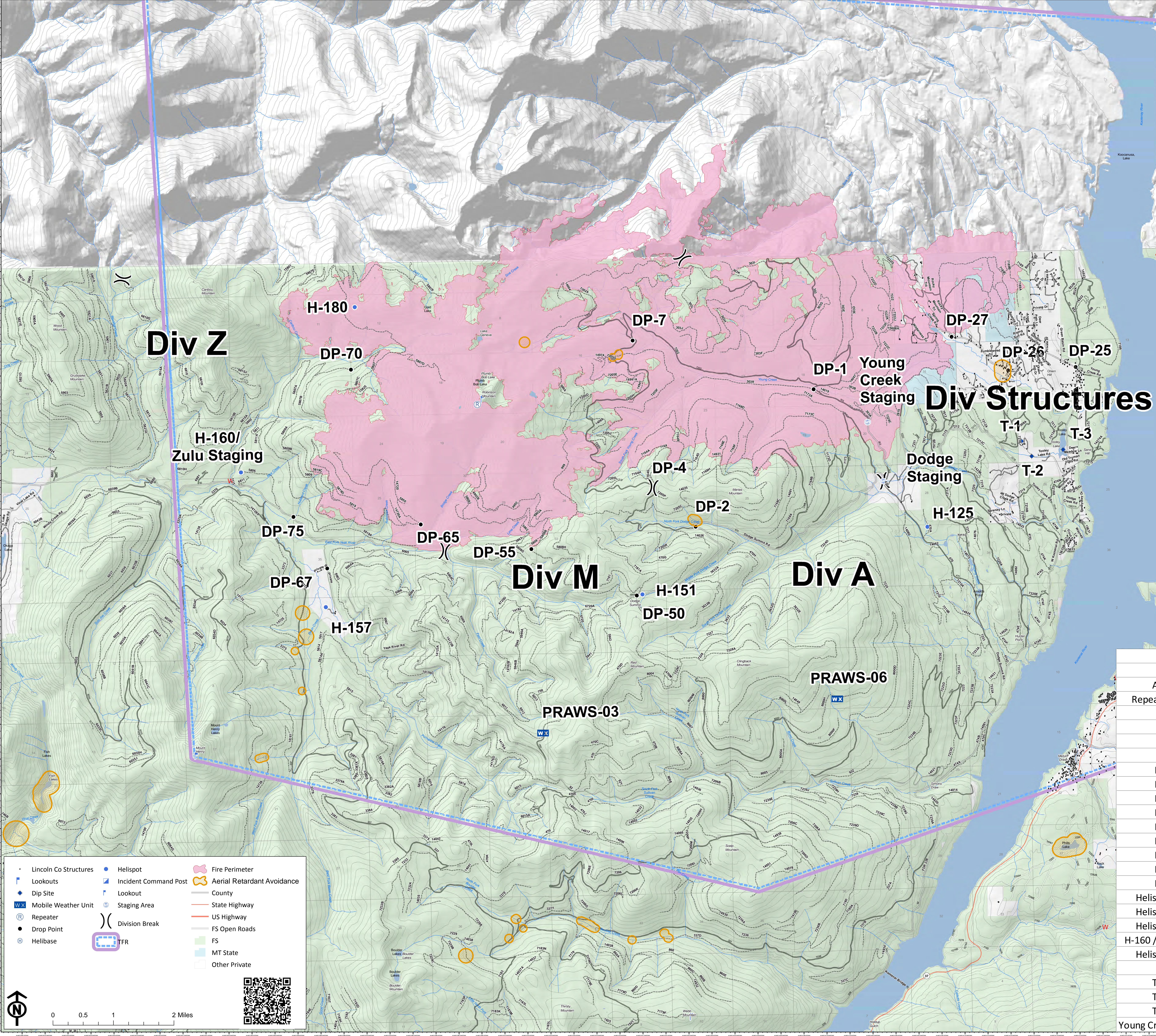
Air Ops Map

**Caribou Fire
MT-KNF-174**

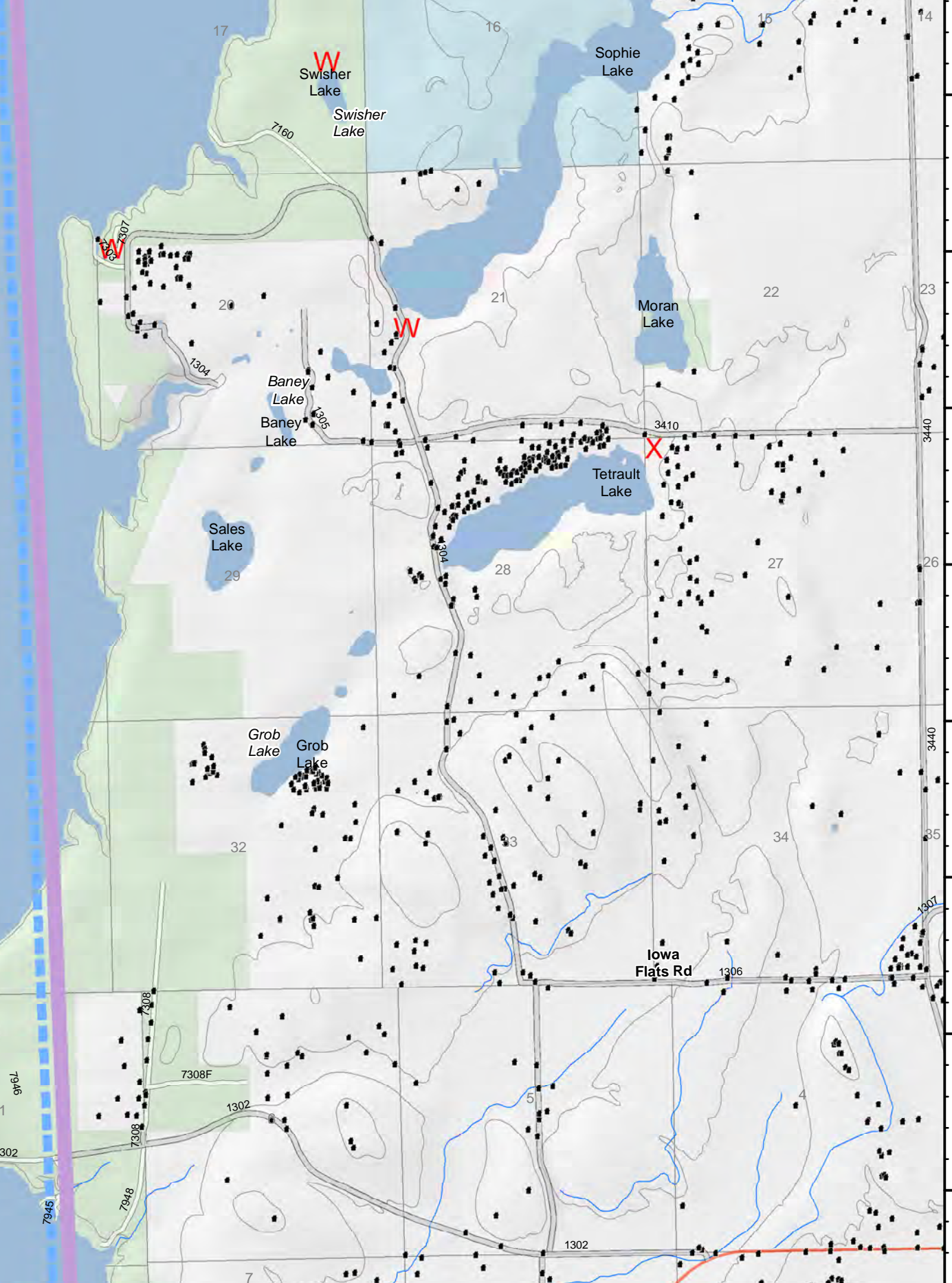
09/17/2017

**24,753 acres
as of IR for 09/16**

FREQUENCIES	AM	FM	ZONE
A2A - TFR A-19	119.350012		
A2A - Rotorwing	5.6000		
A2A - NAVCANADA	126.7000		
A-38		RX 167.900016 TX 7.9000	
A2G - Primary		RX 169.362516 TX 9.3625	
A-77		RX 168.625016 TX 8.6250	110.9
Air Guard		RX/TX 163.1000	
Deck			
Unicom Crystal Lk	122.7000		



Div Structures



Caribou Fire Lat/Long Table

Point	Lat	Long
Airport	48° 58.03' N	115° 17.480' W
Repeater CMR-2	48° 57.959' N	115° 24.820' W
DP-1	48° 58.069' N	115° 17.480' W
DP-2	48° 56.134' N	115° 20.118' W
DP-4	48° 56.702' N	115° 21.041' W
DP-7	48° 58.827' N	115° 21.406' W
DP-25	48° 58.305' N	-115° 11.758'
DP-26	48° 58.277' N	-115° 13.232'
DP-27	48° 58.779' N	-115° 14.446'
DP-50	48° 55.165' N	-115° 21.433'
DP-55	48° 55.863' N	-115° 23.708'
DP-65	48° 56.250' N	115° 26.108' W
DP-67	48° 55.647' N	-115° 28.163'
DP-70	48° 58.493' N	115° 27.559' W
DP-75	48° 56.395' N	115° 28.878' W
Helispot H-125	48° 56.058' N	115° 15.068' W
Helispot H-151	48° 55.180' N	115° 21.308' W
Helispot H-157	48° 55.09' N	115° 28.21' W
H-160 / Zulu Staging	48° 57.049' N	-115° 30.002'
Helispot H-180	48° 59.39' N	115° 27.48' W
ICP	48° 54.650' N	115° 5.040' W
T-1 Dip	48° 57.256' N	115° 12.976' W
T-2 Dip	48° 57.037' N	115° 12.763' W
T-3 Dip	48° 57.119' N	115° 12.074' W
Young Creek Staging	48° 57.582' N	115° 16.324' W

- Lincoln Co Structures
- Lookouts
- Mobile Weather Unit
- Repeater
- Drop Point
- Helibase

- Helispot
- Incident Command Post
- Lookout
- Staging Area
- Division Break
- TFR

- Fire Perimeter
- Aerial Retardant Avoidance
- County
- State Highway
- US Highway
- FS Open Roads
- FS
- MT State
- Other Private