

115°32'30"W 115°31'30"W 115°30'30"W 115°29'30"W 115°28'30"W 115°27'30"W 115°26'30"W 115°25'30"W 115°24'30"W 115°23'30"W 115°22'30"W 115°21'30"W 115°20'30"W

Caribou Fire IAP WEST MAP

9-17-2017



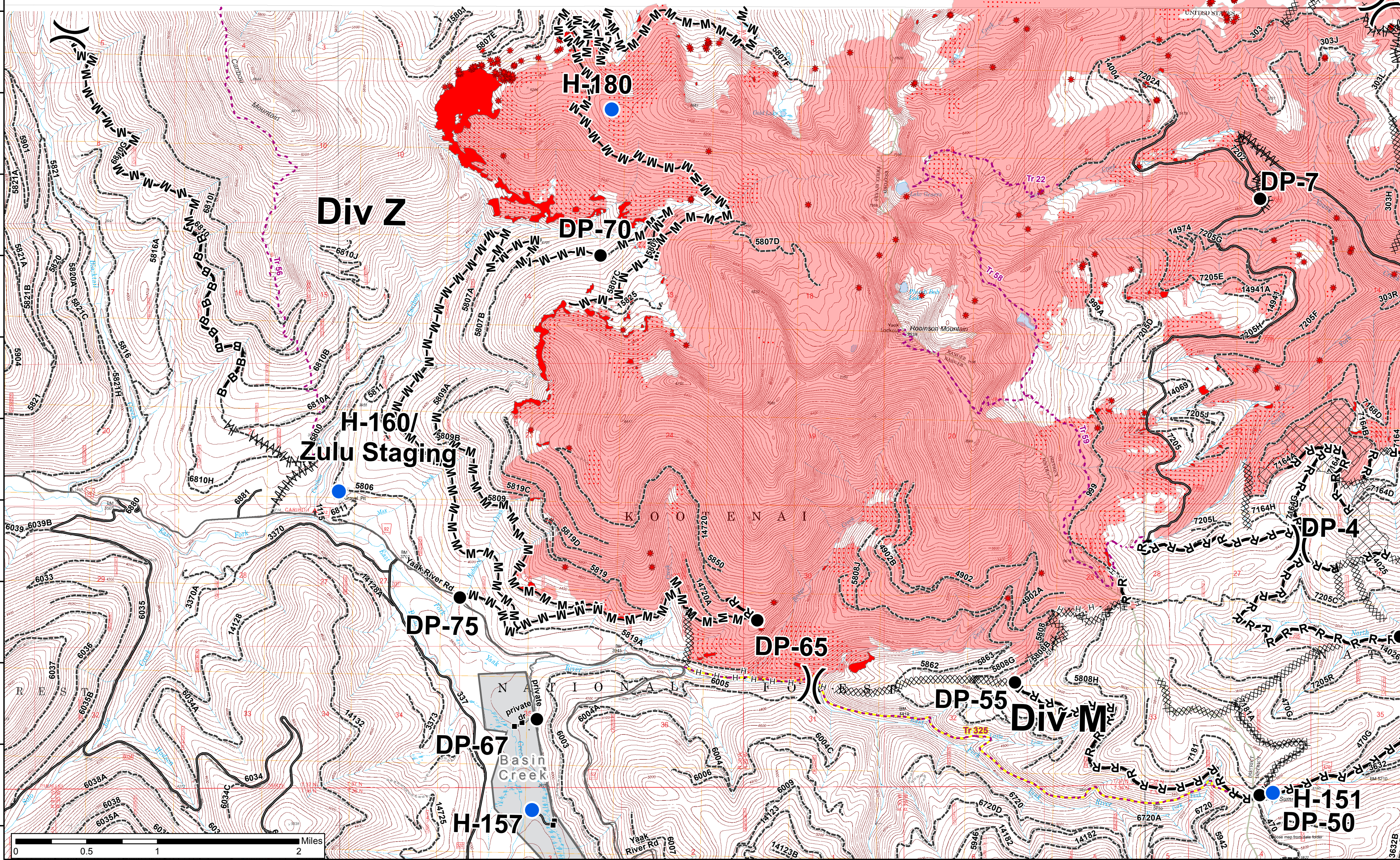
24,753 acres as of IR for 9/16/2017
24,753 acres in USA
2,761 acres in Canada

- Drop Point
- Ⓜ Dip Site
- Helispot
- Ⓢ Staging Area
- ⎓ Division Break
- Structures
- Protection Zones
- Non-FS Roads
- Open Roads
- - - Unknown Roads
- - - KNF Trails
- Trail 325, Dodge Summit Trail
- ⊠ Cling_Units
- ★ Isolated Heat
- ★ Intense Heat
- FS Ownership
- MT State Ownership
- Private Ownership
- XXXXX Completed Dozer Line
- Completed Line
- ▨ Shaded Fuel Break
- B-B Brushed Work Completed on Road
- H - H Completed Hand Line
- M-M Masticated Road
- R-R Road as Completed Line
- Fire Perimeter



49°10'N
49°0'30'N
49°0'0'N
48°59'30'N
48°59'0'N
48°58'30'N
48°58'0'N
48°57'30'N
48°57'0'N
48°56'30'N
48°56'0'N
48°55'30'N
48°55'0'N

49°10'N
49°0'30'N
49°0'0'N
48°59'30'N
48°59'0'N
48°58'30'N
48°58'0'N
48°57'30'N
48°57'0'N
48°56'30'N
48°56'0'N
48°55'30'N
48°55'0'N



115°32'30"W 115°31'30"W 115°30'30"W 115°29'30"W 115°28'30"W 115°27'30"W 115°26'30"W 115°25'30"W 115°24'30"W 115°23'30"W 115°22'30"W 115°21'30"W 115°20'30"W