

# INFORMATION MAP




## Caribou Fire

MT-KNF-174

09/17/2017

<ul style="list-style-type: none"><li>Lincoln Structures</li><li>Fire Perimeter</li><li>Water Bodies</li><li>Closure Area</li><li>International Border</li></ul>	<ul style="list-style-type: none"><li>County</li><li>Other State</li><li>Private</li><li>State Highway</li><li>Converted to Trail</li></ul>	<ul style="list-style-type: none"><li>Decommissioned</li><li>Impassable to Motorized Vehicles</li><li>Restricted/Gated Administrative Use</li><li>Barriered No Admin Use</li><li>Open</li><li>Undetermined</li></ul>	<ul style="list-style-type: none"><li>Trail 325, Dodge Summit Trail</li><li>Completed Dozer Line</li><li>Completed Line</li><li>Shaded Fuel Break</li><li>Brushed Work Completed on Road</li><li>Completed Hand Line</li><li>Masticated Road</li><li>Road as Completed Line</li></ul>	<ul style="list-style-type: none"><li>US Contours - 40 ft</li><li>Canada Contours - 40 ft</li><li>Canada Roads</li><li>Closed Roads &amp; Trails</li></ul>	<ul style="list-style-type: none"><li>Protection Zones</li><li>Basin Creek</li><li>Dodge Creek</li><li>Spring Creek</li><li>West Kootenai North</li><li>West Kootenai South</li></ul>
--	---	--	---	--	---

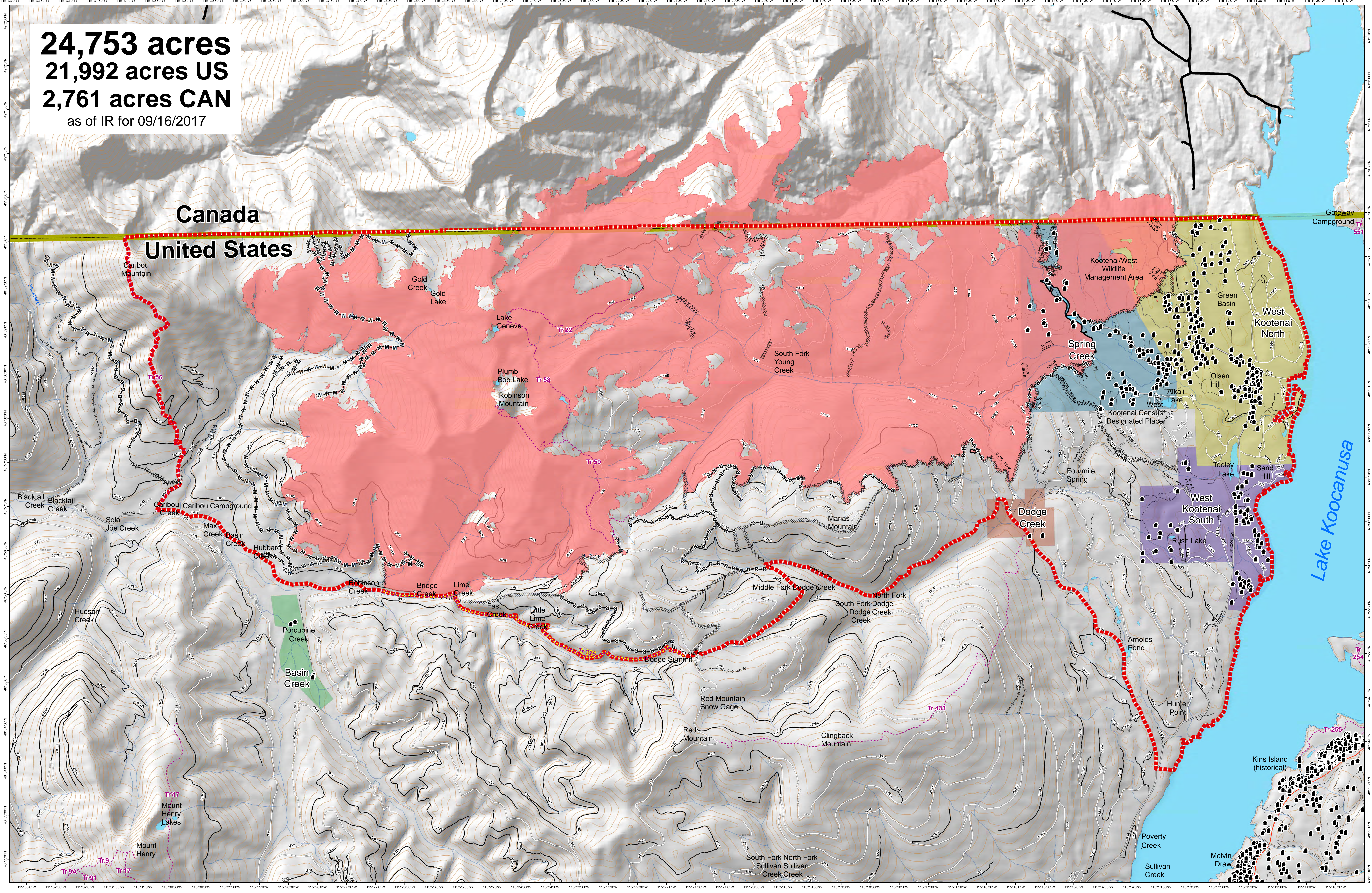
N



0 1 2 3 Miles

Projection: UTM Zone 11N, Datum: NAD83

**24,753 acres**  
**21,992 acres US**  
**2,761 acres CAN**  
as of IR for 09/16/2017



115°30'W 115°29'W 115°28'W 115°27'W 115°26'W 115°25'W 115°24'W 115°23'W 115°22'W 115°21'W 115°20'W 115°19'W 115°18'W 115°17'W 115°16'W 115°15'W 115°14'W 115°13'W 115°12'W 115°11'W 115°10'W 115°9'W 115°8'W 115°7'W 115°6'W 115°5'W 115°4'W 115°3'W 115°2'W 115°1'W 115°0'W

49°20'N 49°19'N 49°18'N 49°17'N 49°16'N 49°15'N 49°14'N 49°13'N 49°12'N 49°11'N 49°10'N 49°9'N 49°8'N 49°7'N 49°6'N 49°5'N 49°4'N 49°3'N 49°2'N 49°1'N 49°0'N