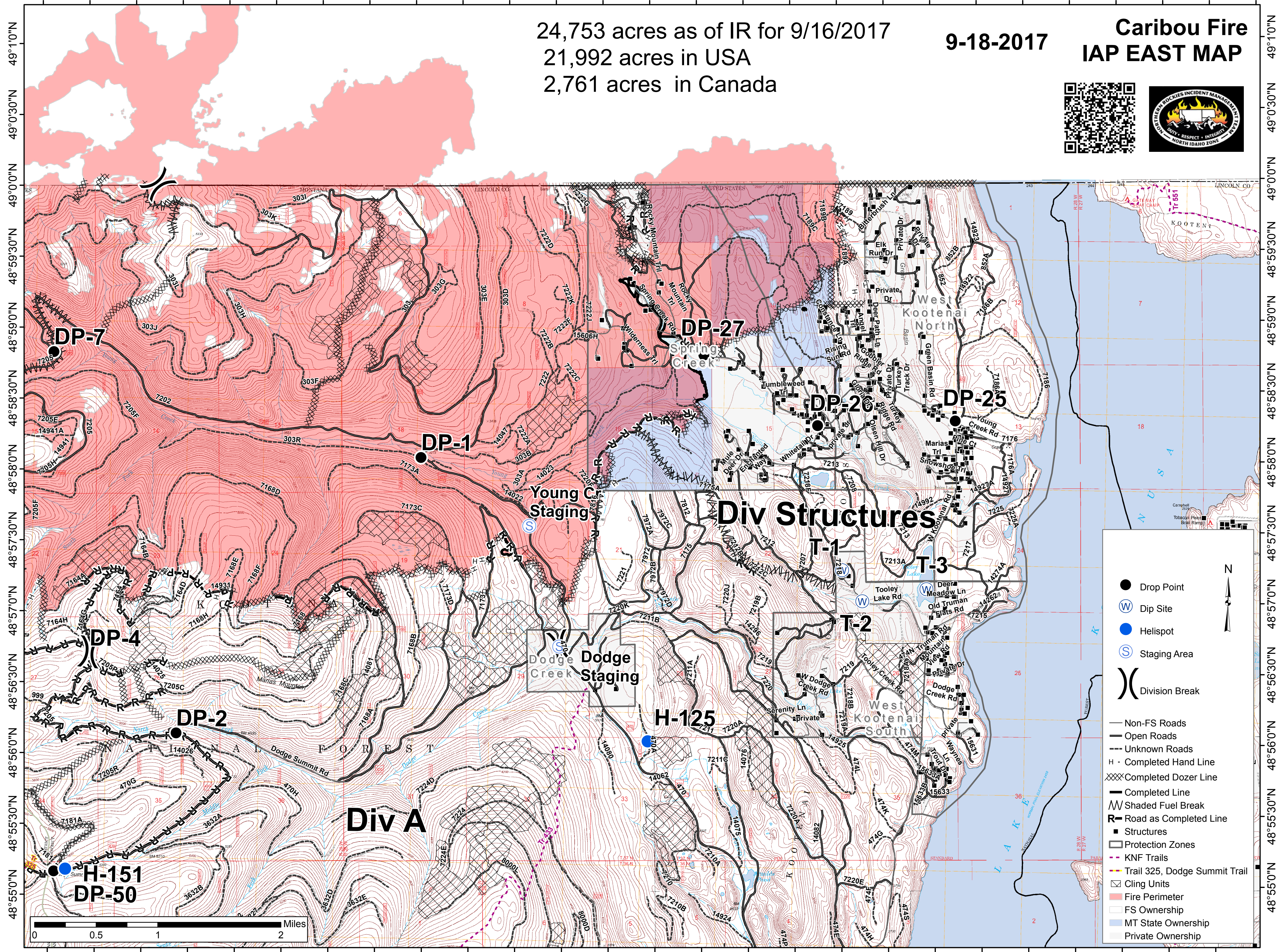


115°21'30"W 115°20'30"W 115°19'30"W 115°18'30"W 115°17'30"W 115°16'30"W 115°15'30"W 115°14'30"W 115°13'30"W 115°12'30"W 115°11'30"W 115°10'30"W 115°9'30"W 115°8'30"W



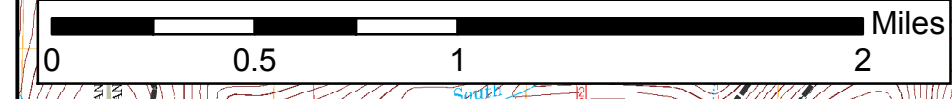
24,753 acres as of IR for 9/16/2017  
21,992 acres in USA  
2,761 acres in Canada

9-18-2017

# Caribou Fire IAP EAST MAP



- Drop Point
- ⊙ Dip Site
- Helispot
- ⊙ Staging Area
- ( ) Division Break
- Non-FS Roads
- Open Roads
- - - Unknown Roads
- H - Completed Hand Line
- XXXX Completed Dozer Line
- Completed Line
- ▨ Shaded Fuel Break
- R- Road as Completed Line
- Structures
- Protection Zones
- - - KNF Trails
- Trail 325, Dodge Summit Trail
- Cling Units
- ▨ Fire Perimeter
- ▨ FS Ownership
- ▨ MT State Ownership
- ▨ Private Ownership



49°10'N  
49°0'30'N  
49°0'0'N  
48°59'30'N  
48°59'0'N  
48°58'30'N  
48°58'0'N  
48°57'30'N  
48°57'0'N  
48°56'30'N  
48°56'0'N  
48°55'30'N  
48°55'0'N

49°10'N  
49°0'30'N  
49°0'0'N  
48°59'30'N  
48°59'0'N  
48°58'30'N  
48°58'0'N  
48°57'30'N  
48°57'0'N  
48°56'30'N  
48°56'0'N  
48°55'30'N  
48°55'0'N

115°21'0"W 115°20'0"W 115°19'0"W 115°18'0"W 115°17'0"W 115°16'0"W 115°15'0"W 115°14'0"W 115°13'0"W 115°12'0"W 115°11'0"W 115°10'0"W 115°9'0"W