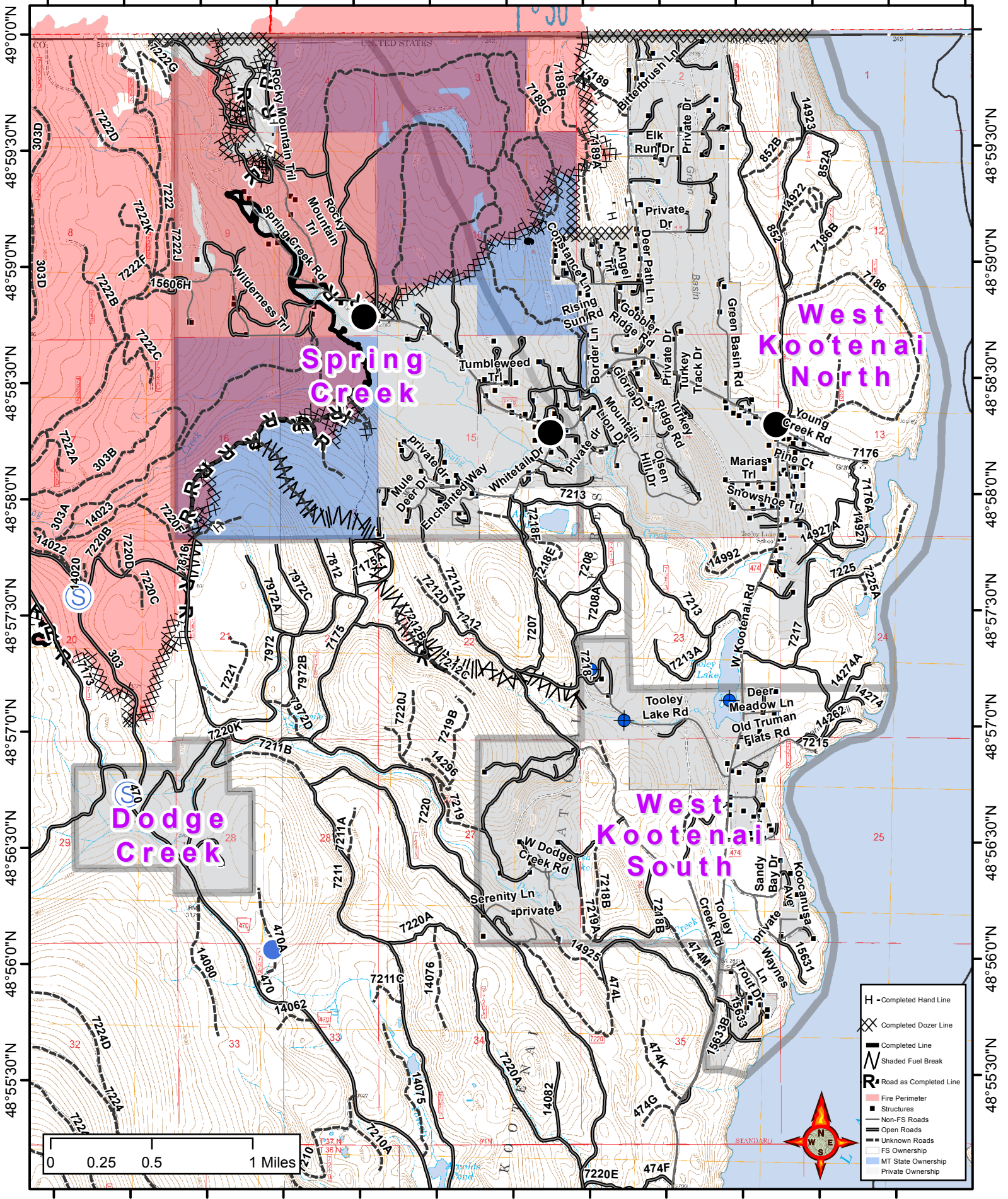


# Caribou IAP 9-19-2017 Structure Protection



115°16'30"W 115°15'30"W 115°14'30"W 115°13'30"W 115°12'30"W 115°11'30"W 115°10'30"W



115°16'0"W 115°15'0"W 115°14'0"W 115°13'0"W 115°12'0"W 115°11'0"W

- H - Completed Hand Line
- ⊗ Completed Dozer Line
- ▬ Completed Line
- ▬ Shaded Fuel Break
- R Road as Completed Line
- Fire Perimeter
- Structures
- Non-FS Roads
- ▬ Open Roads
- ▬ Unknown Roads
- ▬ FS Ownership
- ▬ MT State Ownership
- ▬ Private Ownership