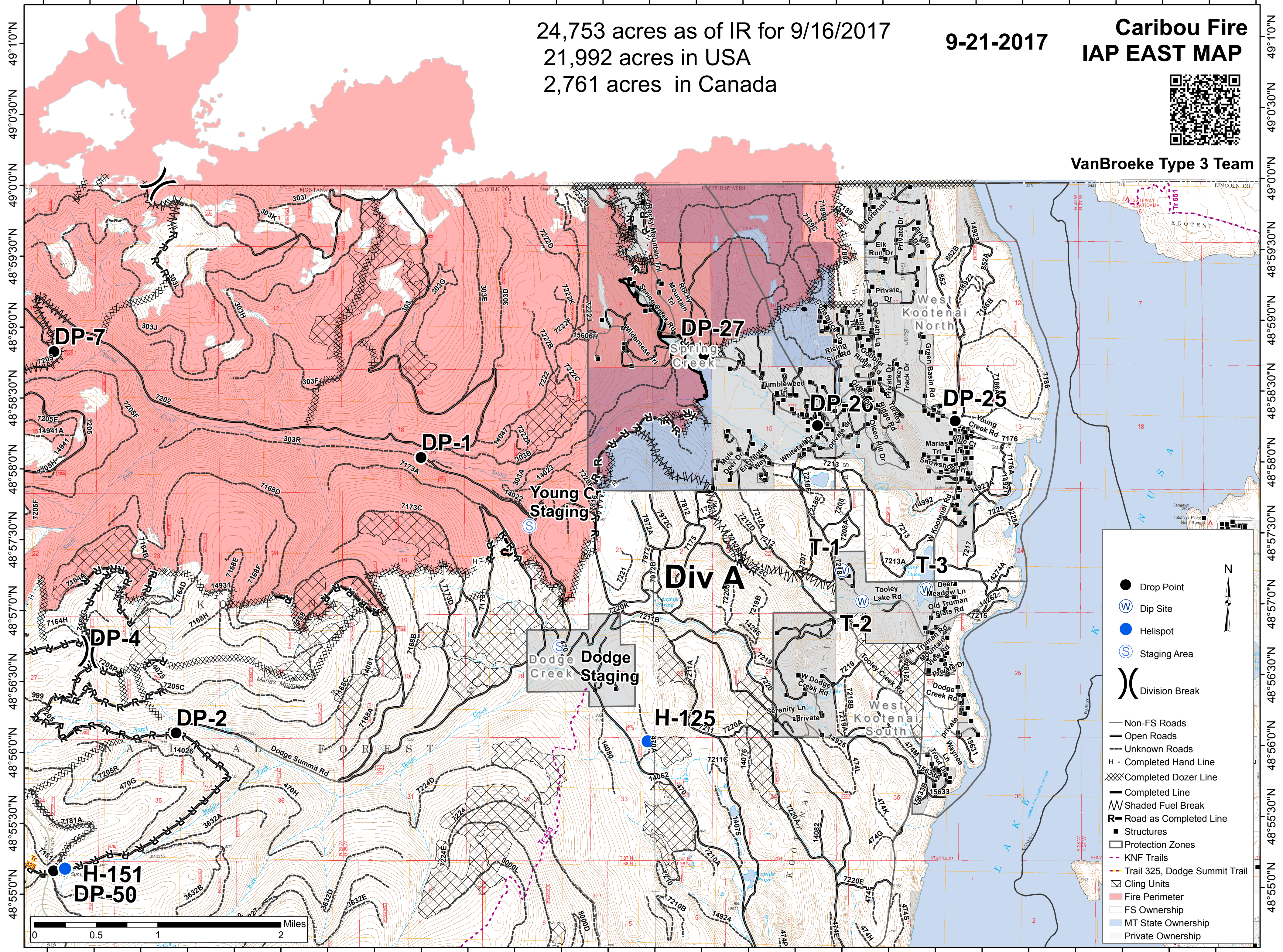


115°21'30"W 115°20'30"W 115°19'30"W 115°18'30"W 115°17'30"W 115°16'30"W 115°15'30"W 115°14'30"W 115°13'30"W 115°12'30"W 115°11'30"W 115°10'30"W 115°9'30"W 115°8'30"W



24,753 acres as of IR for 9/16/2017
21,992 acres in USA
2,761 acres in Canada

9-21-2017

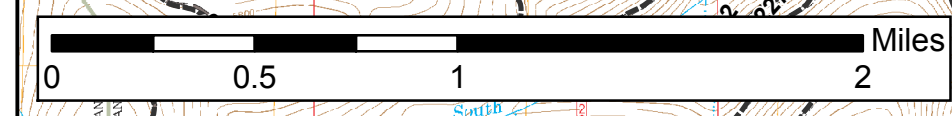
Caribou Fire IAP EAST MAP



VanBroeke Type 3 Team

Legend

- Drop Point
- Ⓜ Dip Site
- Helispot
- Ⓢ Staging Area
- () Division Break
- Non-FS Roads
- Open Roads
- - - Unknown Roads
- H - Completed Hand Line
- XXXX Completed Dozer Line
- Completed Line
- ▨ Shaded Fuel Break
- R- Road as Completed Line
- Structures
- Protection Zones
- - - KNF Trails
- Trail 325, Dodge Summit Trail
- Cling Units
- ▨ Fire Perimeter
- ▨ FS Ownership
- ▨ MT State Ownership
- ▨ Private Ownership



115°21'0"W 115°20'0"W 115°19'0"W 115°18'0"W 115°17'0"W 115°16'0"W 115°15'0"W 115°14'0"W 115°13'0"W 115°12'0"W 115°11'0"W 115°10'0"W 115°9'0"W