

115°32'30"W 115°31'30"W 115°30'30"W 115°29'30"W 115°28'30"W 115°27'30"W 115°26'30"W 115°25'30"W 115°24'30"W 115°23'30"W 115°22'30"W 115°21'30"W 115°20'30"W

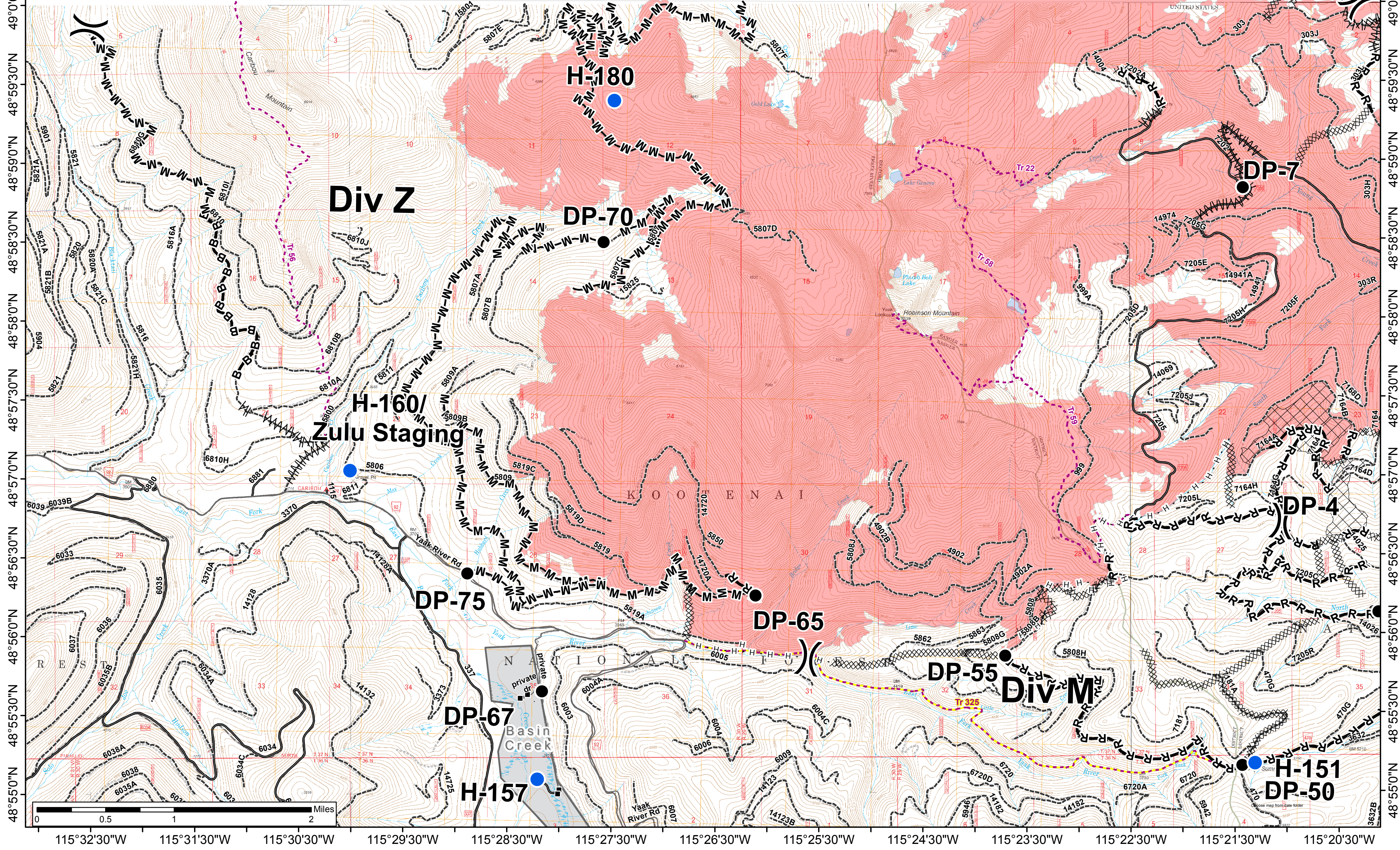
Caribou Fire IAP WEST MAP

9-21-2017

24,753 acres as of IR for 9/16/2017
24.753 acres in USA
2,761 acres in Canada

VanBroeke Type 3 Team

- Drop Point
- ⊙ Dip Site
- Helispot
- ⊙ Staging Area
- () Division Break
- ▣ Structures
- ▭ Protection Zones
- Non-FS Roads
- Open Roads
- - - Unknown Roads
- - - KNF Trails
- - - Trail 325, Dodge Summit Trail
- ⊠ Cling Units
- ▭ FS Ownership
- ▭ MT State Ownership
- ▭ Private Ownership
- H - H Completed Hand Line
- XXXXX Completed Dozer Line
- Completed Line
- 〰 Shaded Fuel Break
- B-B Brushed Work Completed on Road
- M-M Masticated Road
- R-R Road as Completed Line
- Fire Perimeter



49°10'N 49°0'30"N 49°0'0"N 49°0'30"N 48°59'30"N 48°59'0"N 48°58'30"N 48°58'0"N 48°57'30"N 48°57'0"N 48°56'30"N 48°56'0"N 48°55'30"N 48°55'0"N 115°32'30"W 115°31'30"W 115°30'30"W 115°29'30"W 115°28'30"W 115°27'30"W 115°26'30"W 115°25'30"W 115°24'30"W 115°23'30"W 115°22'30"W 115°21'30"W 115°20'30"W