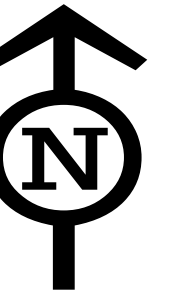
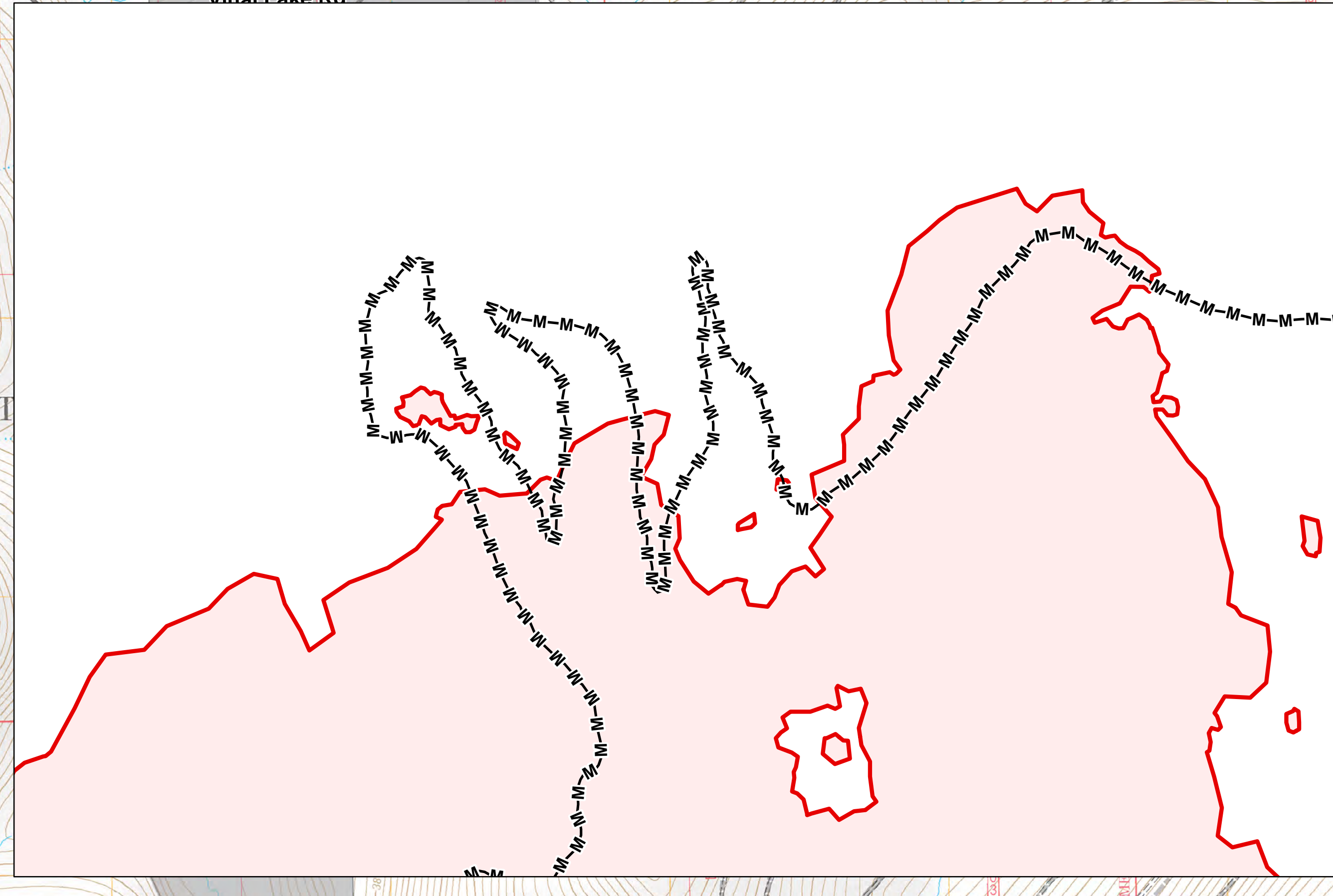
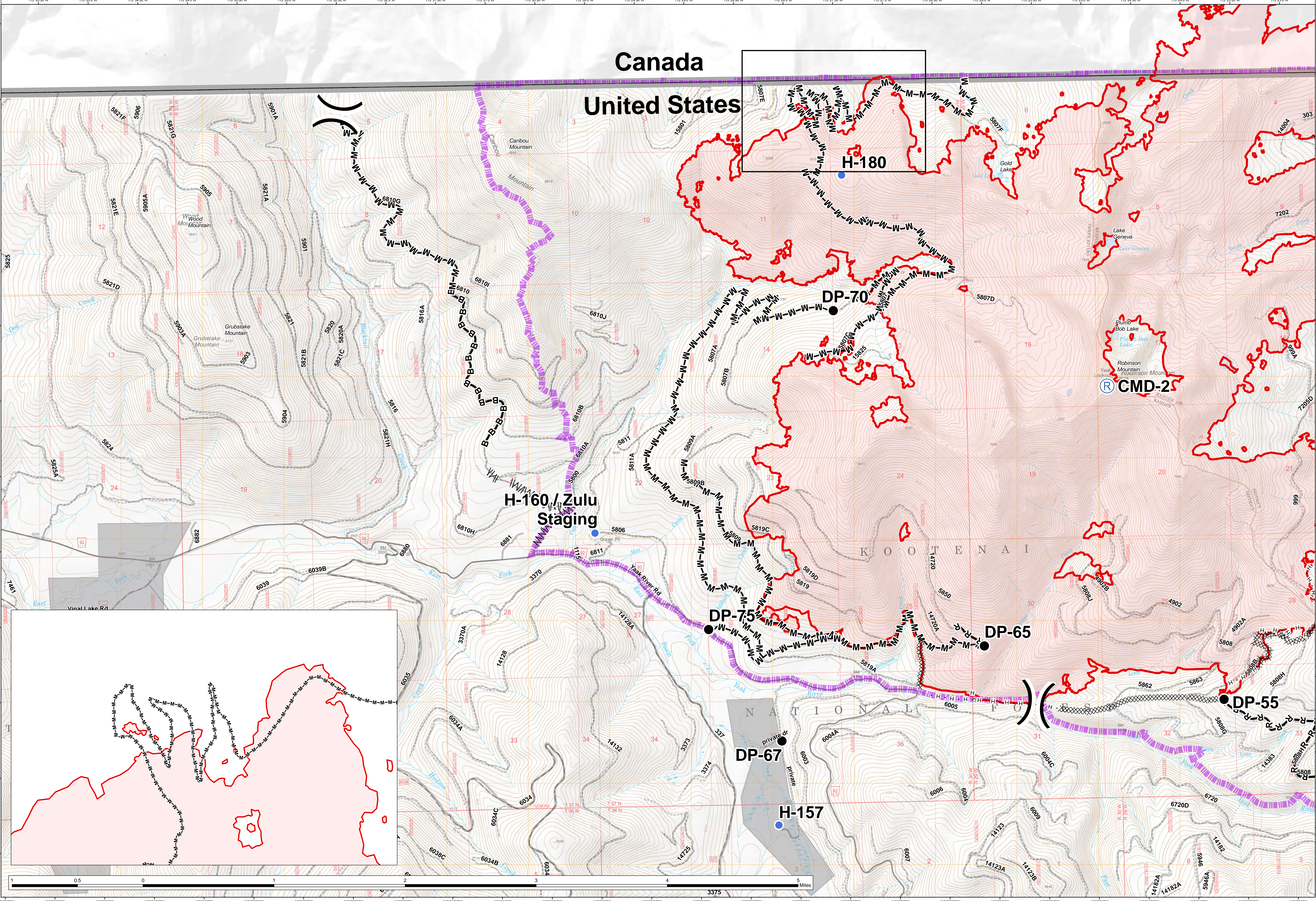


**Suppression Repair Map**  
**Caribou**  
**MT-KNF-174**

**24,753 acres**  
**21,992 acres (US)**  
**2,761 acres (CAN)**  
 as of IR for 9/16



- Drop Point
- Helispot
- Ⓡ Repeater
- ⎵ Division Break
- ⋯ Completed Hand Line
- ⊘ Completed Dozer Line
- ⋯ Shaded Fuel Break
- B—B—B Brushed Work Completed on Road
- M—M—M Masticated Road
- R—R—R Road as Completed Line
- ⊗ Closure Area
- FS Ownership
- Private Ownership
- ▭ International Border
- ⬮ Fire Perimeter



**Canada**  
**United States**

**H-180**

**DP-70**

**Ⓡ CMD-2**

**H-160/Zulu Staging**

**DP-75**

**DP-65**

**DP-55**

**DP-67**

**H-157**

