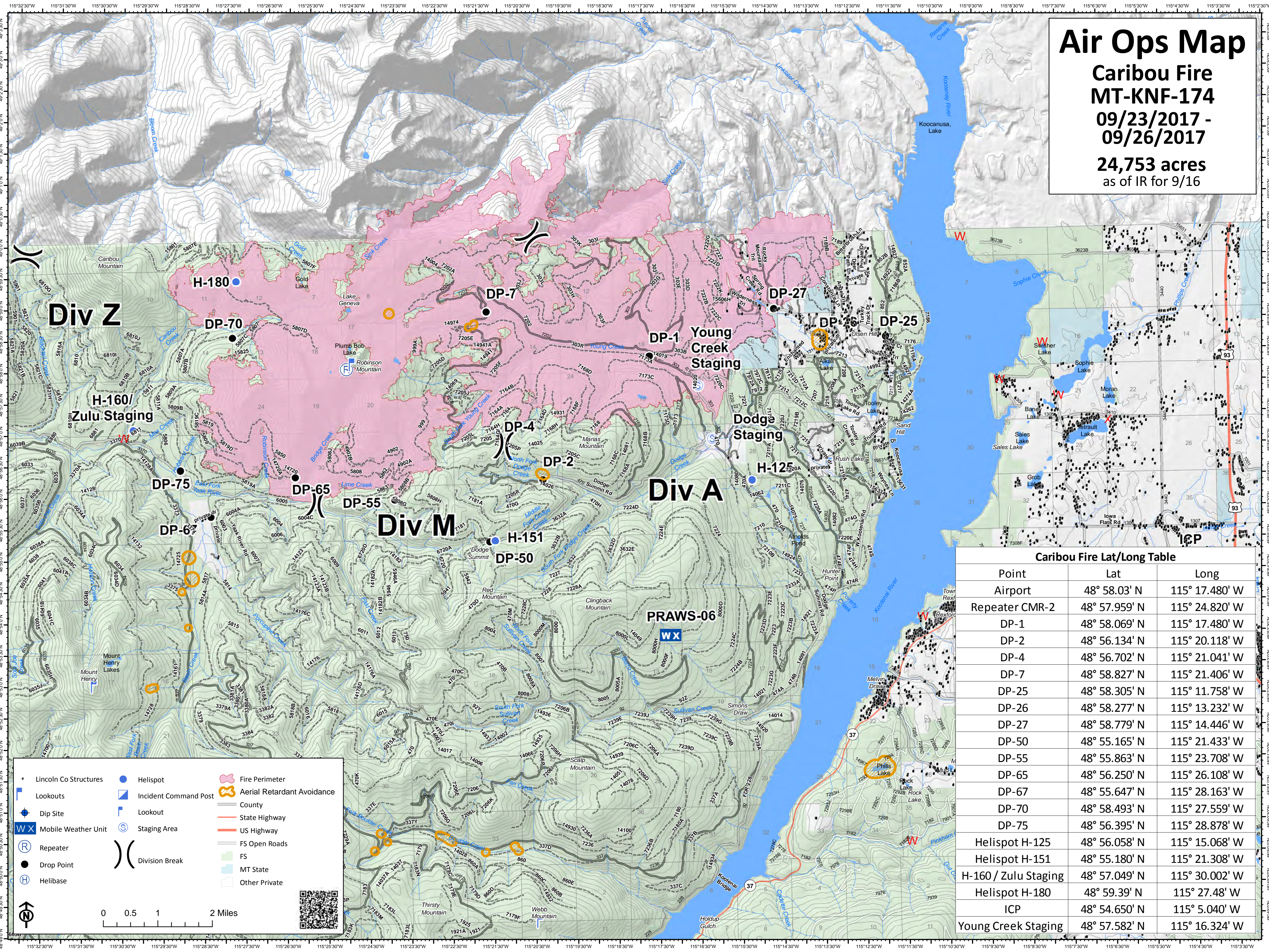


Air Ops Map

Caribou Fire MT-KNF-174

09/23/2017 -
09/26/2017

24,753 acres
as of IR for 9/16



Div Z

Div A

Div M

- * Lincoln Co Structures
- Lookouts
- ⬇ Dip Site
- WX Mobile Weather Unit
- R Repeater
- H Helibase
- Helispot
- ▣ Incident Command Post
- ⬇ Lookout
- ⊙ Staging Area
-) Division Break
-) Fire Perimeter
-) Aerial Retardant Avoidance
-) County
-) State Highway
-) US Highway
-) FS Open Roads
-) FS
-) MT State
-) Other Private

0 0.5 1 2 Miles

Caribou Fire Lat/Long Table		
Point	Lat	Long
Airport	48° 58.03' N	115° 17.480' W
Repeater CMR-2	48° 57.959' N	115° 24.820' W
DP-1	48° 58.069' N	115° 17.480' W
DP-2	48° 56.134' N	115° 20.118' W
DP-4	48° 56.702' N	115° 21.041' W
DP-7	48° 58.827' N	115° 21.406' W
DP-25	48° 58.305' N	115° 11.758' W
DP-26	48° 58.277' N	115° 13.232' W
DP-27	48° 58.779' N	115° 14.446' W
DP-50	48° 55.165' N	115° 21.433' W
DP-55	48° 55.863' N	115° 23.708' W
DP-65	48° 56.250' N	115° 26.108' W
DP-67	48° 55.647' N	115° 28.163' W
DP-70	48° 58.493' N	115° 27.559' W
DP-75	48° 56.395' N	115° 28.878' W
Helispot H-125	48° 56.058' N	115° 15.068' W
Helispot H-151	48° 55.180' N	115° 21.308' W
H-160 / Zulu Staging	48° 57.049' N	115° 30.002' W
Helispot H-180	48° 59.39' N	115° 27.48' W
ICP	48° 54.650' N	115° 5.040' W
Young Creek Staging	48° 57.582' N	115° 16.324' W