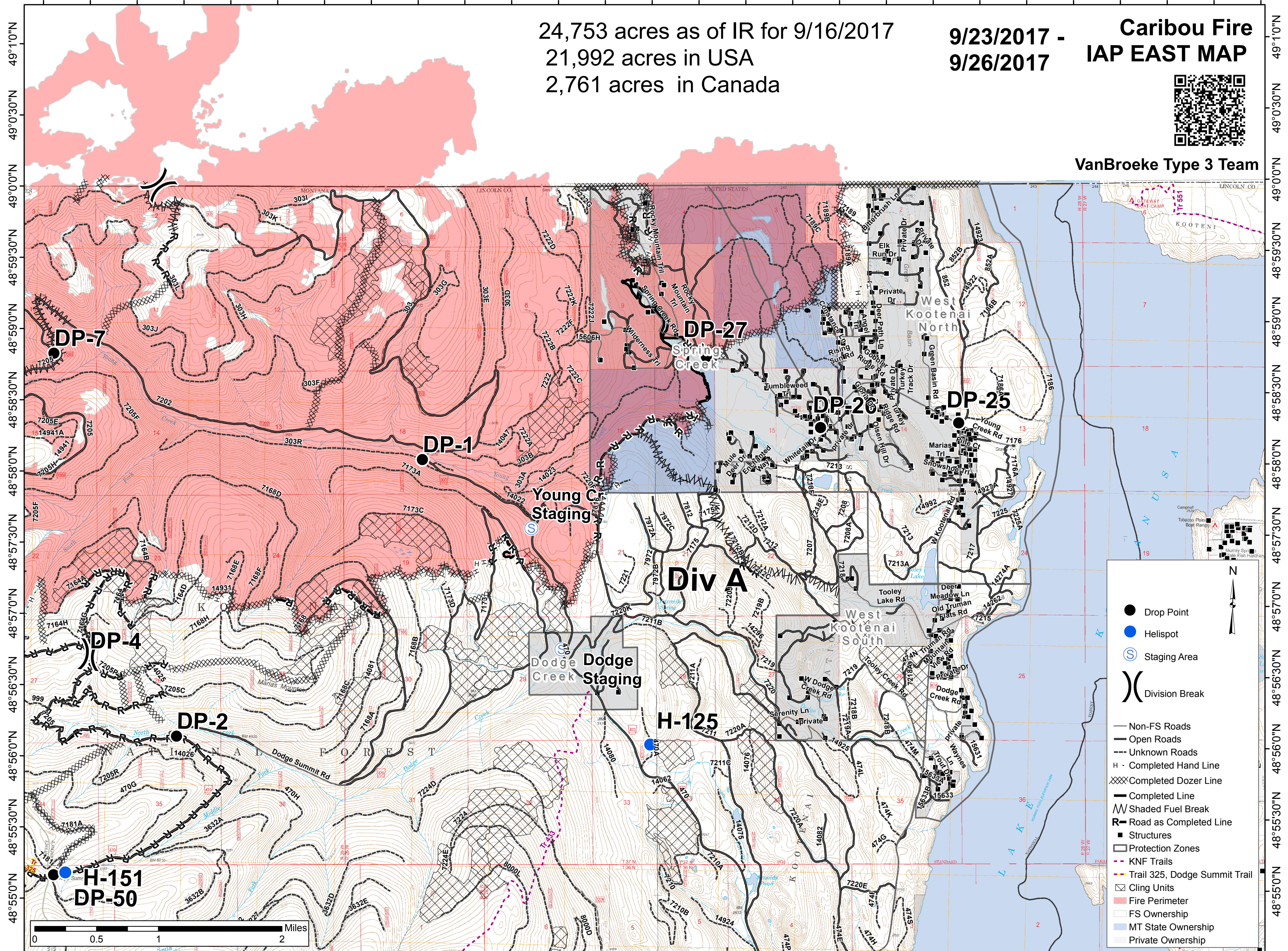


115°21'30"W 115°20'30"W 115°19'30"W 115°18'30"W 115°17'30"W 115°16'30"W 115°15'30"W 115°14'30"W 115°13'30"W 115°12'30"W 115°11'30"W 115°10'30"W 115°9'30"W 115°8'30"W



24,753 acres as of IR for 9/16/2017
21,992 acres in USA
2,761 acres in Canada

9/23/2017 -
9/26/2017

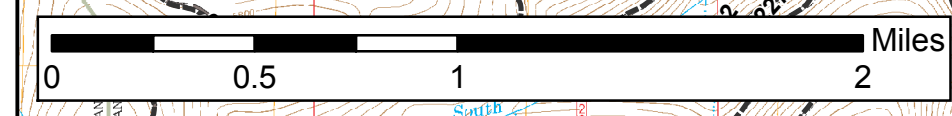
Caribou Fire IAP EAST MAP



VanBroeke Type 3 Team

Legend

- Drop Point
- Helispot
- Ⓢ Staging Area
- () Division Break
- Non-FS Roads
- Open Roads
- - - Unknown Roads
- H - Completed Hand Line
- XXXX Completed Dozer Line
- Completed Line
- ▨ Shaded Fuel Break
- R- Road as Completed Line
- Structures
- Protection Zones
- - - KNF Trails
- Trail 325, Dodge Summit Trail
- ▨ Cling Units
- ▨ Fire Perimeter
- ▨ FS Ownership
- ▨ MT State Ownership
- ▨ Private Ownership



115°21'0"W 115°20'0"W 115°19'0"W 115°18'0"W 115°17'0"W 115°16'0"W 115°15'0"W 115°14'0"W 115°13'0"W 115°12'0"W 115°11'0"W 115°10'0"W 115°9'0"W

49°10'N
49°0'30"N
49°0'0"N
48°59'30"N
48°59'0"N
48°58'30"N
48°58'0"N
48°57'30"N
48°57'0"N
48°56'30"N
48°56'0"N
48°55'30"N
48°55'0"N

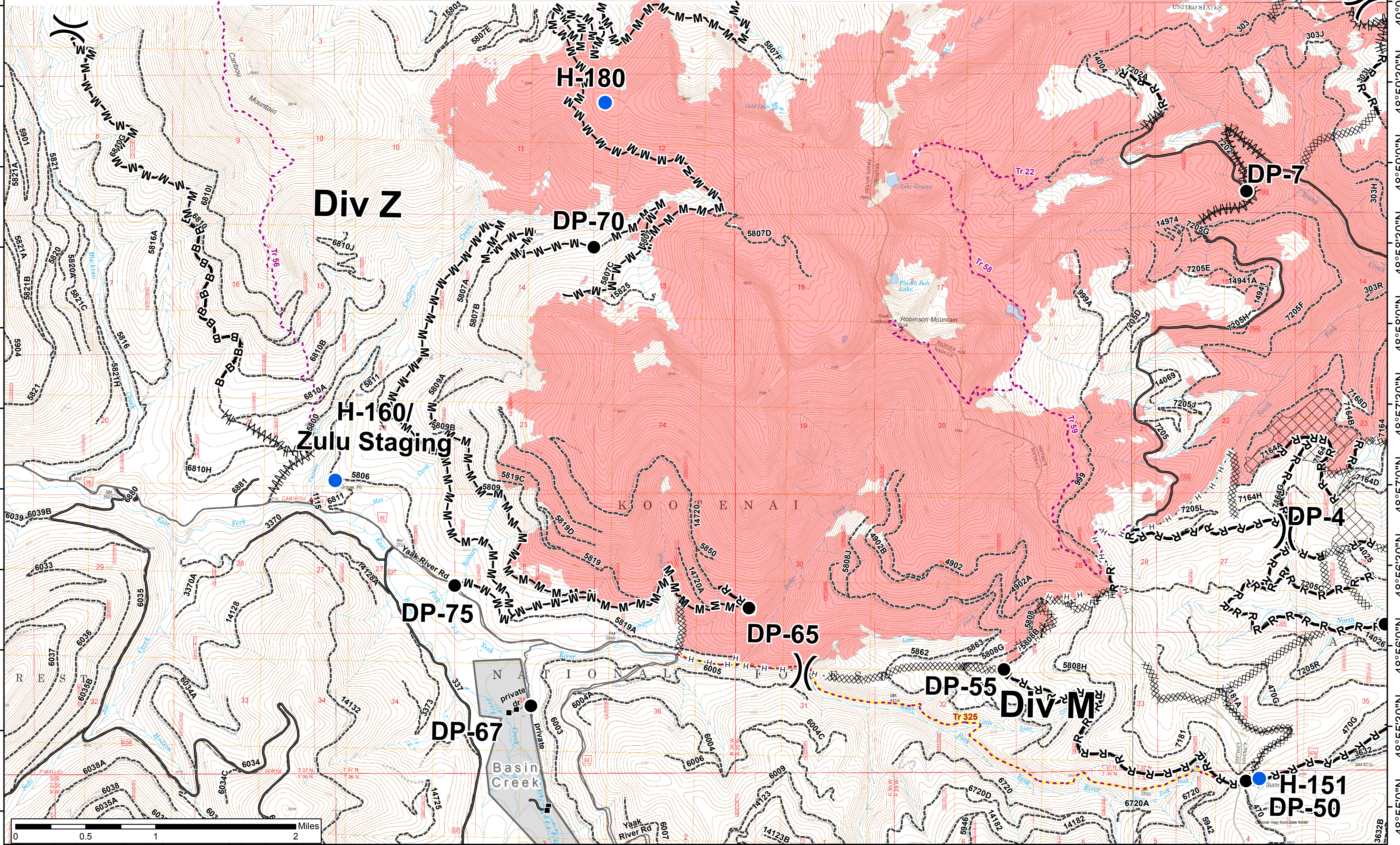
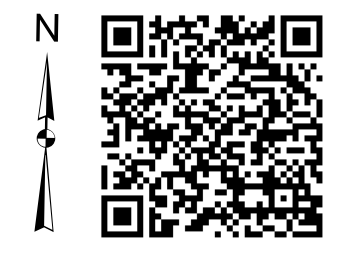
49°10'N
49°0'30"N
49°0'0"N
48°59'30"N
48°59'0"N
48°58'30"N
48°58'0"N
48°57'30"N
48°57'0"N
48°56'30"N
48°56'0"N
48°55'30"N
48°55'0"N

115°32'30"W 115°31'30"W 115°30'30"W 115°29'30"W 115°28'30"W 115°27'30"W 115°26'30"W 115°25'30"W 115°24'30"W 115°23'30"W 115°22'30"W 115°21'30"W 115°20'30"W

Caribou Fire 9/23/2017 -
IAP WEST MAP 9/26/2017
24,753 acres as of IR for 9/16/2017
24,753 acres in USA
2,761 acres in Canada

VanBroeke Type 3 Team

- Drop Point
- Dip Site
- Helispot
- Staging Area
- ⎓ Division Break
- Structures
- Protection Zones
- Non-FS Roads
- Open Roads
- - - Unknown Roads
- - - KNF Trails
- - - Trail 325, Dodge Summit Trail
- Cling Units
- FS Ownership
- MT State Ownership
- Private Ownership
- H - H Completed Hand Line
- XXXXX Completed Dozer Line
- Completed Line
- 〰 Shaded Fuel Break
- B-B Brushed Work Completed on Road
- M-M Masticated Road
- R-R Road as Completed Line
- Fire Perimeter



48°55'0"N 48°55'30"N 48°56'0"N 48°56'30"N 48°57'0"N 48°57'30"N 48°58'0"N 48°58'30"N 48°59'0"N 48°59'30"N 49°0'0"N 49°0'30"N 49°1'0"N

