

115°32'30"W 115°31'30"W 115°30'30"W 115°29'30"W 115°28'30"W 115°27'30"W 115°26'30"W 115°25'30"W 115°24'30"W 115°23'30"W 115°22'30"W 115°21'30"W 115°20'30"W

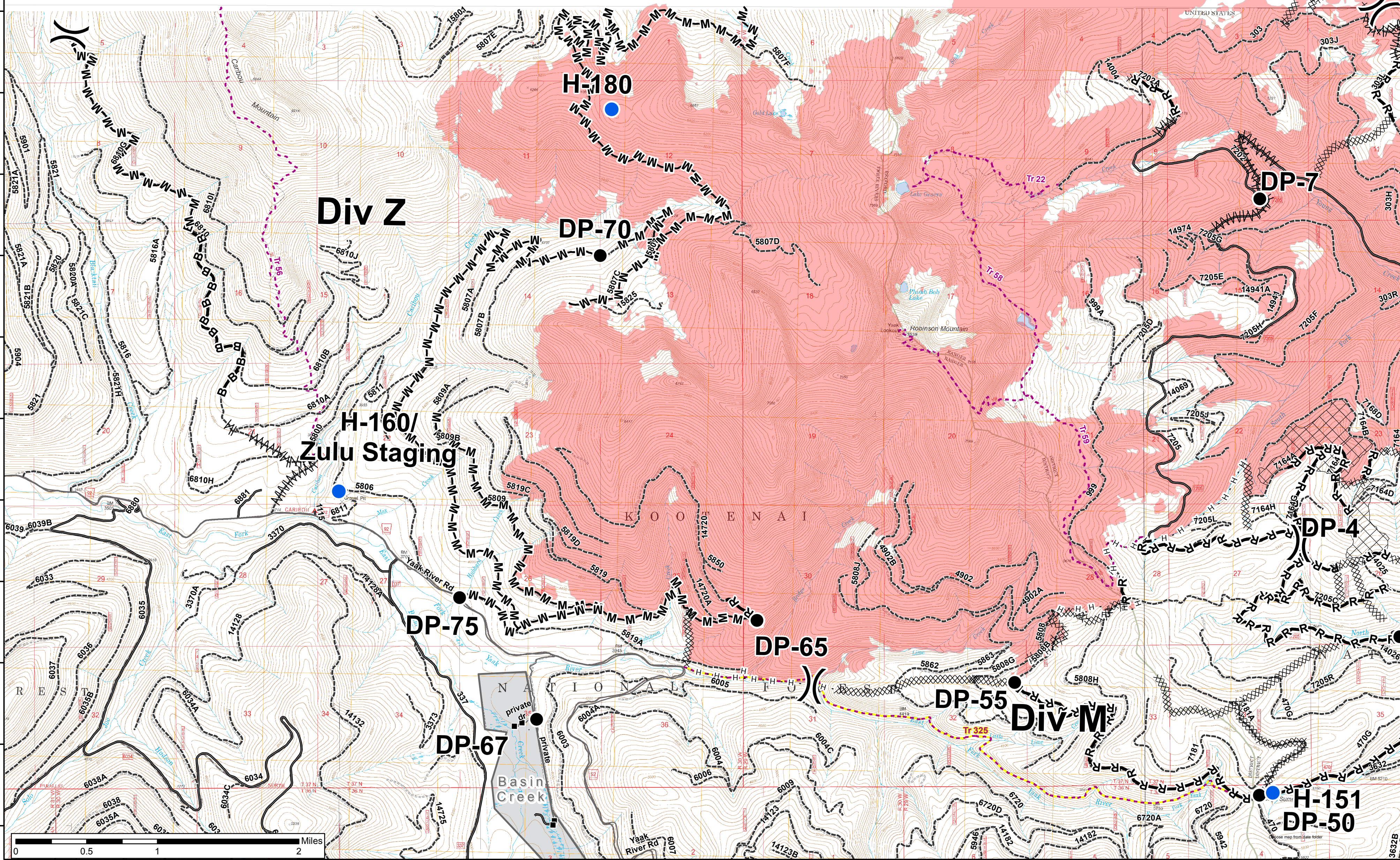
# Caribou Fire IAP WEST MAP

9/23/2017 -  
9/26/2017

24,753 acres as of IR for 9/16/2017  
24,753 acres in USA  
2,761 acres in Canada

VanBroeke Type 3 Team

- Drop Point
- Ⓜ Dip Site
- Helispot
- Ⓢ Staging Area
- ⎓ Division Break
- Structures
- Protection Zones
- Non-FS Roads
- Open Roads
- - - Unknown Roads
- · - · - KNF Trails
- · - · - Trail 325, Dodge Summit Trail
- ⊠ Cling Units
- FS Ownership
- MT State Ownership
- Private Ownership
- H - H Completed Hand Line
- ⊗ Completed Dozer Line
- Completed Line
- ⌚ Shaded Fuel Break
- B - B Brushed Work Completed on Road
- M - M Masticated Road
- R - R Road as Completed Line
- Fire Perimeter



48°55'0"N 48°55'30"N 48°56'0"N 48°56'30"N 48°57'0"N 48°57'30"N 48°58'0"N 48°58'30"N 48°59'0"N 48°59'30"N 49°0'0"N 49°0'30"N 49°1'0"N

