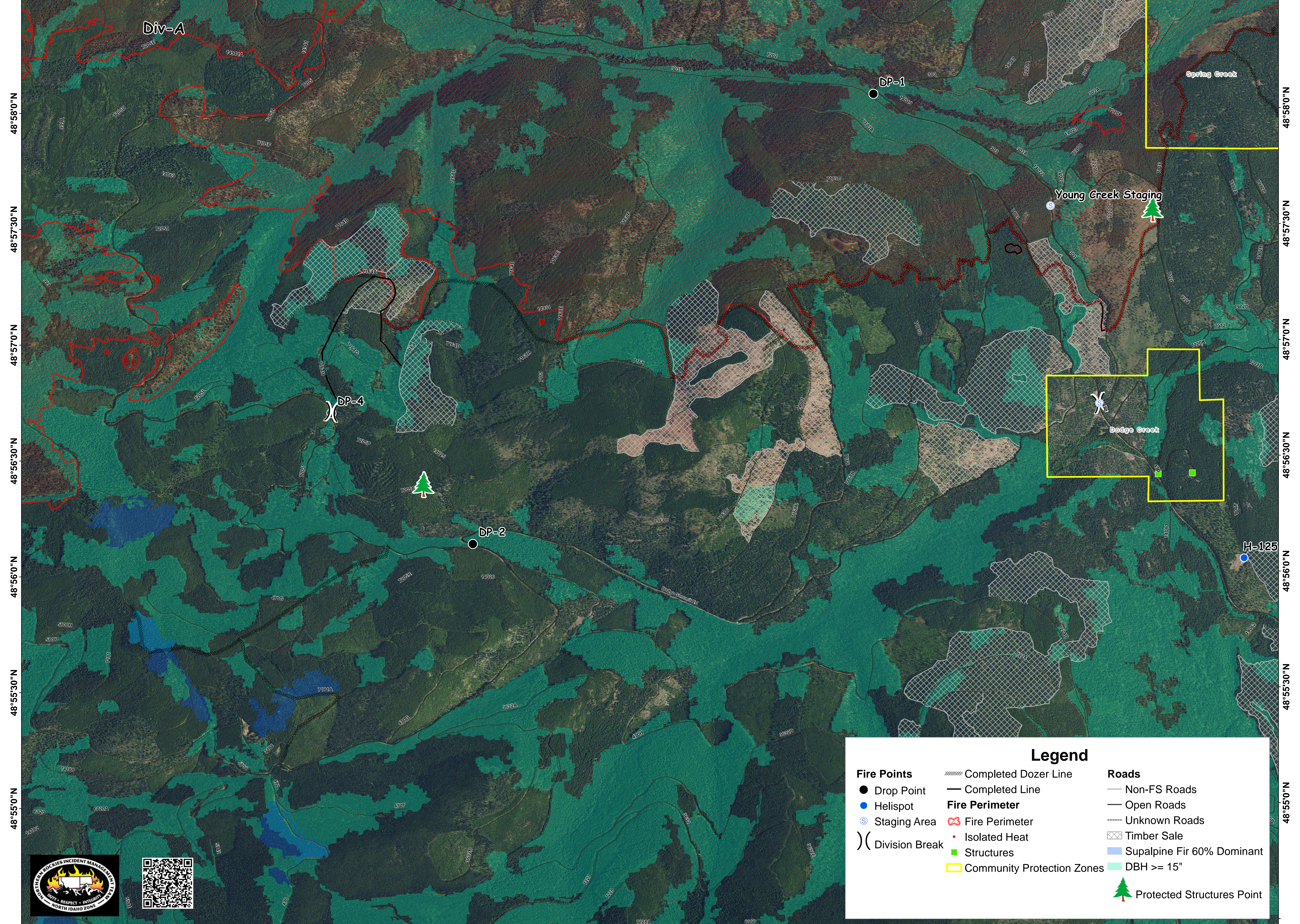


115°23'0"W 115°22'30"W 115°22'0"W 115°21'30"W 115°21'0"W 115°20'30"W 115°20'0"W 115°19'30"W 115°19'0"W 115°18'30"W 115°18'0"W 115°17'30"W 115°17'0"W 115°16'30"W 115°16'0"W 115°15'30"W 115°15'0"W



48°58'0"N
48°57'30"N
48°57'0"N
48°56'30"N
48°56'0"N
48°55'30"N
48°55'0"N

48°58'0"N
48°57'30"N
48°57'0"N
48°56'30"N
48°56'0"N
48°55'30"N
48°55'0"N

Legend

Fire Points	Completed Dozer Line	Roads
● Drop Point	— Completed Line	— Non-FS Roads
● Helispot	Fire Perimeter	— Open Roads
⊙ Staging Area	Fire Perimeter	— Unknown Roads
) Division Break	• Isolated Heat	Timber Sale
	■ Structures	Supalpine Fir 60% Dominant
	Community Protection Zones	DBH >= 15"
		Protected Structures Point



115°23'0"W 115°22'30"W 115°22'0"W 115°21'30"W 115°21'0"W 115°20'30"W 115°20'0"W 115°19'30"W 115°19'0"W 115°18'30"W 115°18'0"W 115°17'30"W 115°17'0"W 115°16'30"W 115°16'0"W 115°15'30"W 115°15'0"W

0 2,500 5,000 Feet

Caribou Division A Caribou Fire MT-KNF-000174

