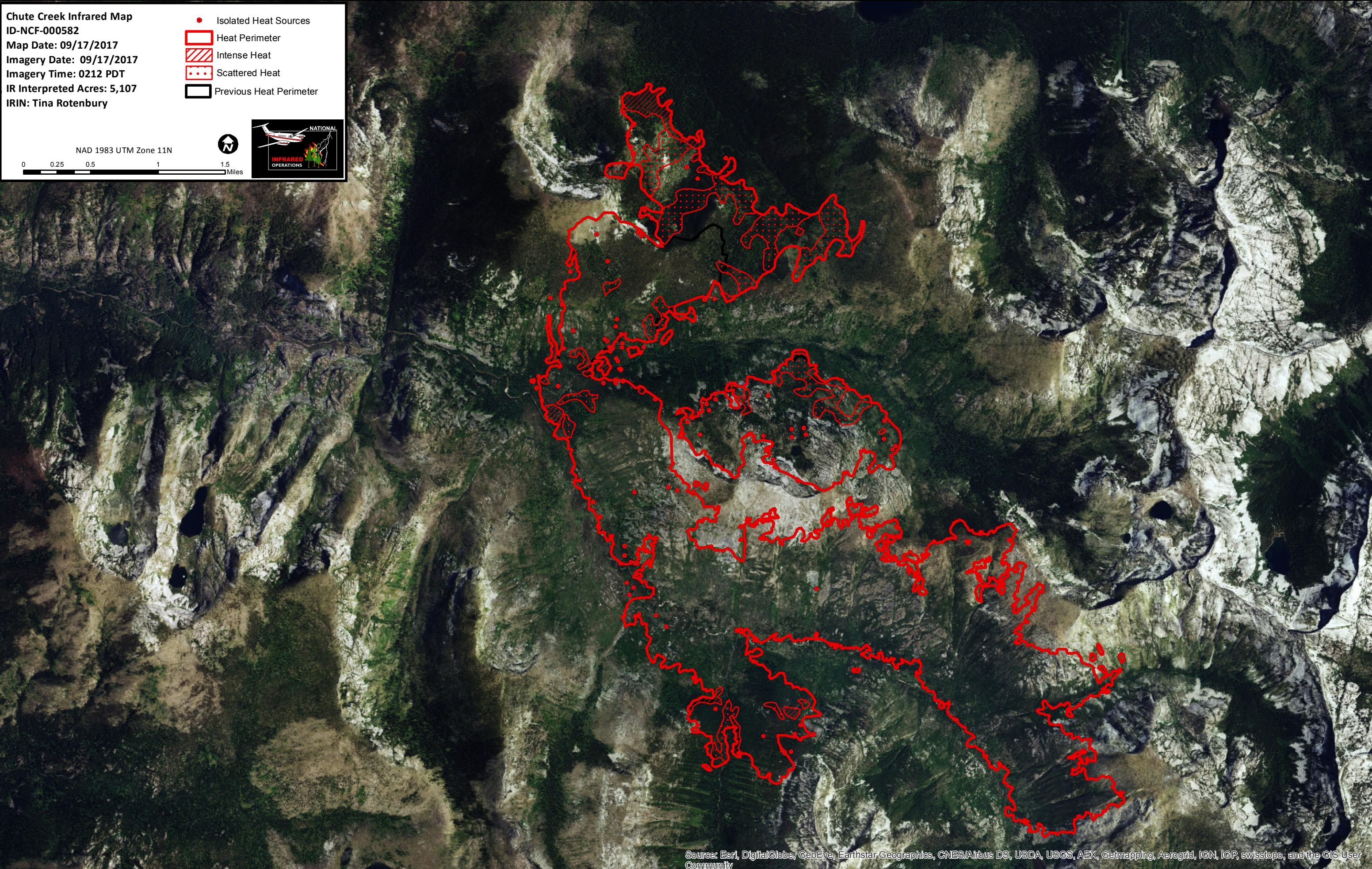


114°39'W 114°38'W 114°37'W 114°36'W 114°35'W 114°34'W 114°33'W 114°32'W 114°31'W 114°30'W 114°29'W 114°28'W 114°27'W

**Chute Creek Infrared Map**  
ID-NCF-000582  
Map Date: 09/17/2017  
Imagery Date: 09/17/2017  
Imagery Time: 0212 PDT  
IR Interpreted Acres: 5,107  
IRIN: Tina Rotenbury

- Isolated Heat Sources
- Heat Perimeter
- Intense Heat
- Scattered Heat
- Previous Heat Perimeter

NAD 1983 UTM Zone 11N



114°39'W 114°38'W 114°37'W 114°36'W 114°35'W 114°34'W 114°33'W 114°32'W 114°31'W 114°30'W 114°29'W 114°28'W 114°27'W

46°18'N  
46°17'N  
46°16'N  
46°15'N  
46°14'N

46°18'N  
46°17'N  
46°16'N  
46°15'N  
46°14'N  
46°13'N

Source: Esri, DigitalGlobe, GeoEye, Earthstar Geographics, CNES/Airbus DS, USDA, USGS, AEX, Getmapping, Aerogrid, IGN, IGP, swisstopo, and the GIS User Community