


112°0'30"W 112°0'0"W 111°59'30"W 111°59'0"W 111°58'30"W 111°58'0"W 111°57'30"W


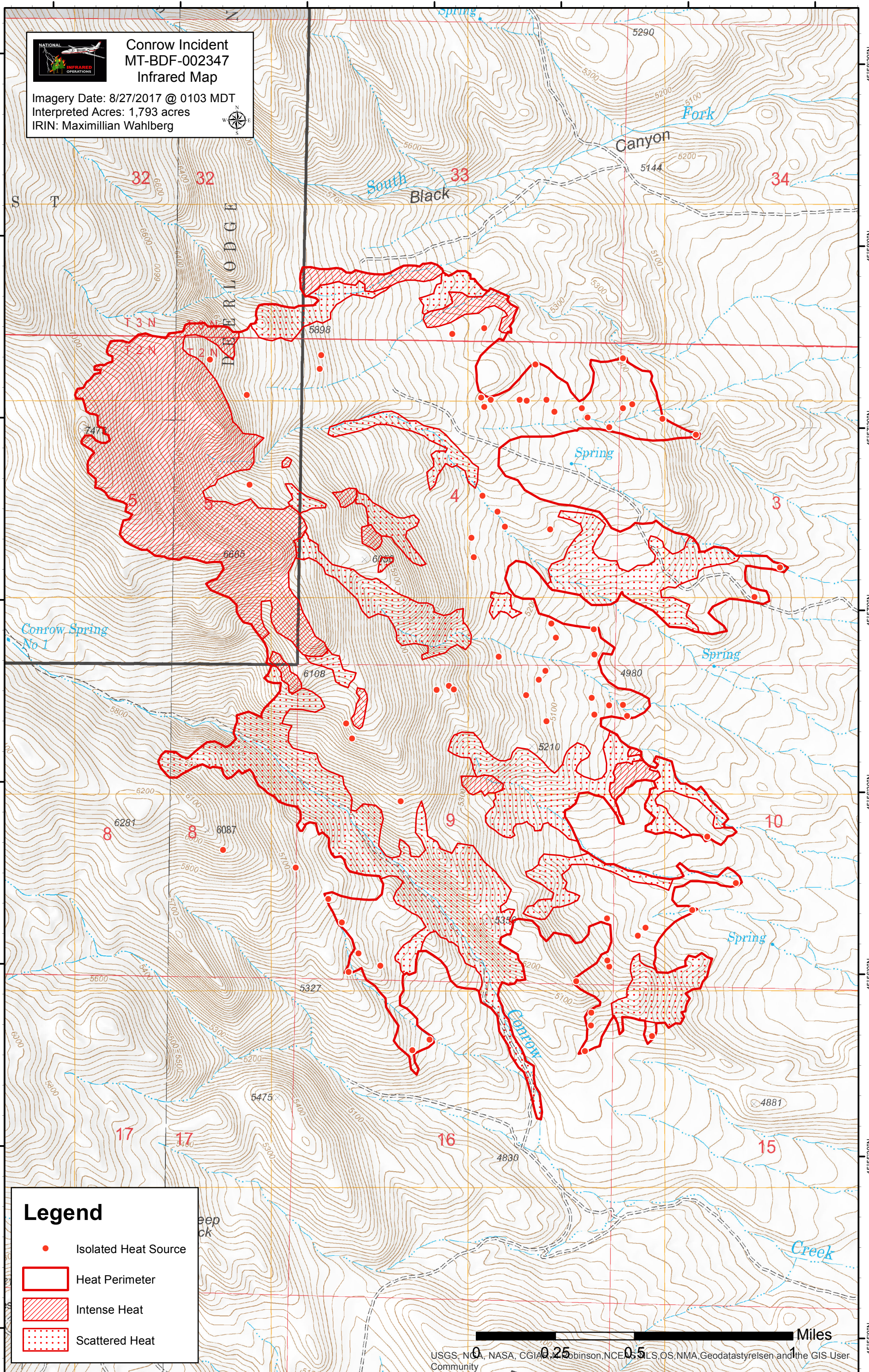
45°56'30"N  
45°58'0"N  
45°57'30"N  
45°57'0"N  
45°56'30"N  
45°56'0"N  
45°55'30"N  
45°55'0"N

45°58'30"N  
45°58'0"N  
45°57'30"N  
45°57'0"N  
45°56'30"N  
45°56'0"N  
45°55'30"N  
45°55'0"N



**Conrow Incident**  
**MT-BDF-002347**  
**Infrared Map**

Imagery Date: 8/27/2017 @ 0103 MDT  
 Interpreted Acres: 1,793 acres  
 IRIN: Maximillian Wahlberg

### Legend

- Isolated Heat Source
- Heat Perimeter
- Intense Heat
- Scattered Heat

Miles  
 0 0.25 0.5 1

USGS, NOAA, NASA, CGIAR, Robinson, NCEA, SLS, OS, NMA, Geodatastyrelsen and the GIS User Community

112°0'30"W 112°0'0"W 111°59'30"W 111°59'0"W 111°58'30"W 111°58'0"W 111°57'30"W