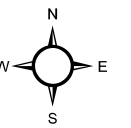






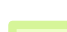
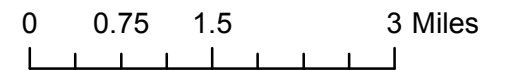


**Helena - Lewis and Clark National Forest
Rocky Mountain Ranger District
Area Closures
Sunday 9/3/2017**

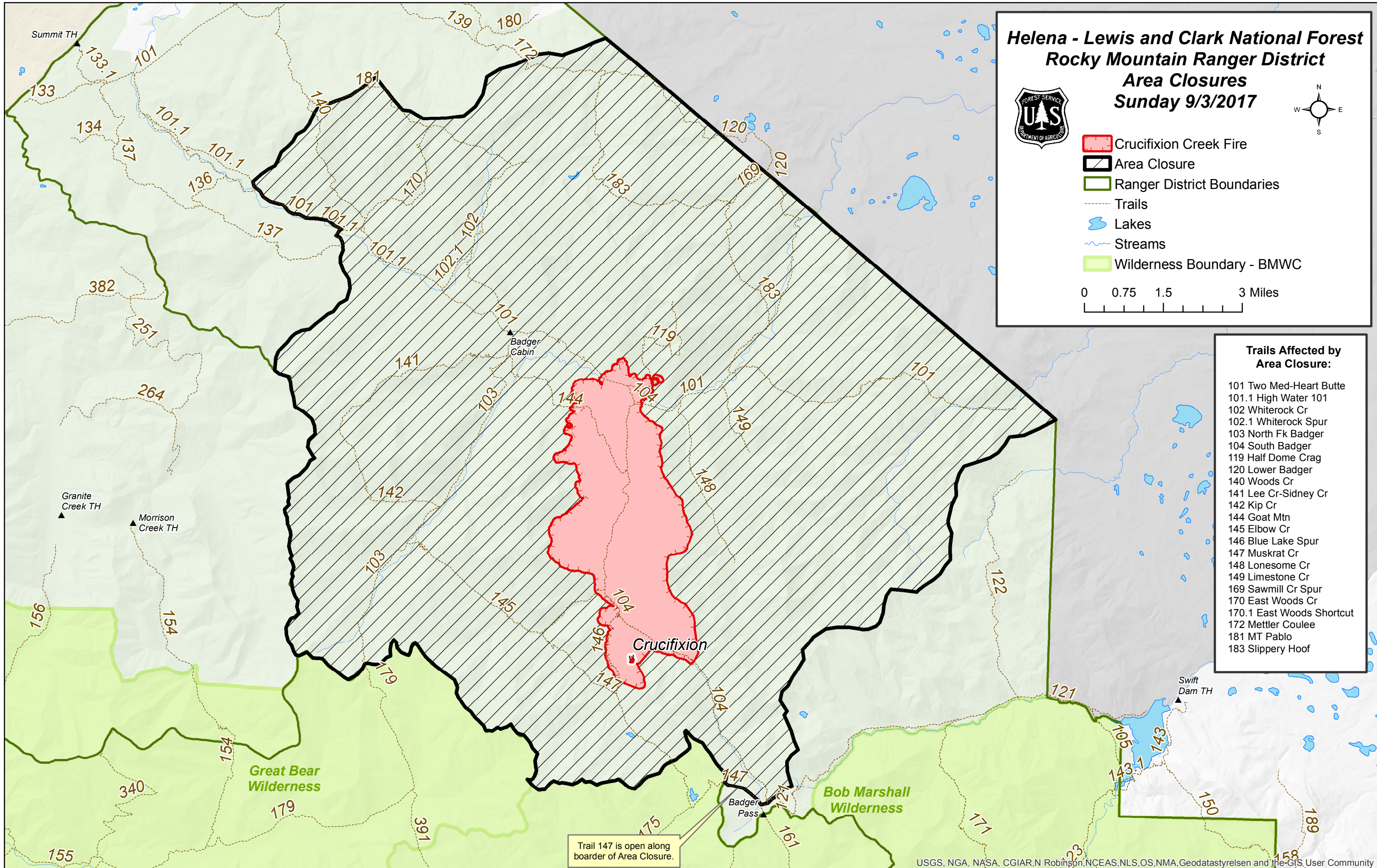


-  Crucifixion Creek Fire
-  Area Closure
-  Ranger District Boundaries
-  Trails
-  Lakes
-  Streams
-  Wilderness Boundary - BMWC



**Trails Affected by
Area Closure:**

- 101 Two Med-Heart Butte
- 101.1 High Water 101
- 102 Whiterock Cr
- 102.1 Whiterock Spur
- 103 North Fk Badger
- 104 South Badger
- 119 Half Dome Crag
- 120 Lower Badger
- 140 Woods Cr
- 141 Lee Cr-Sidney Cr
- 142 Kip Cr
- 144 Goat Mtn
- 145 Elbow Cr
- 146 Blue Lake Spur
- 147 Muskrat Cr
- 148 Lonesome Cr
- 149 Limestone Cr
- 169 Sawmill Cr Spur
- 170 East Woods Cr
- 170.1 East Woods Shortcut
- 172 Mettler Coulee
- 181 MT Pablo
- 183 Slippery Hoof



Trail 147 is open along boarder of Area Closure.