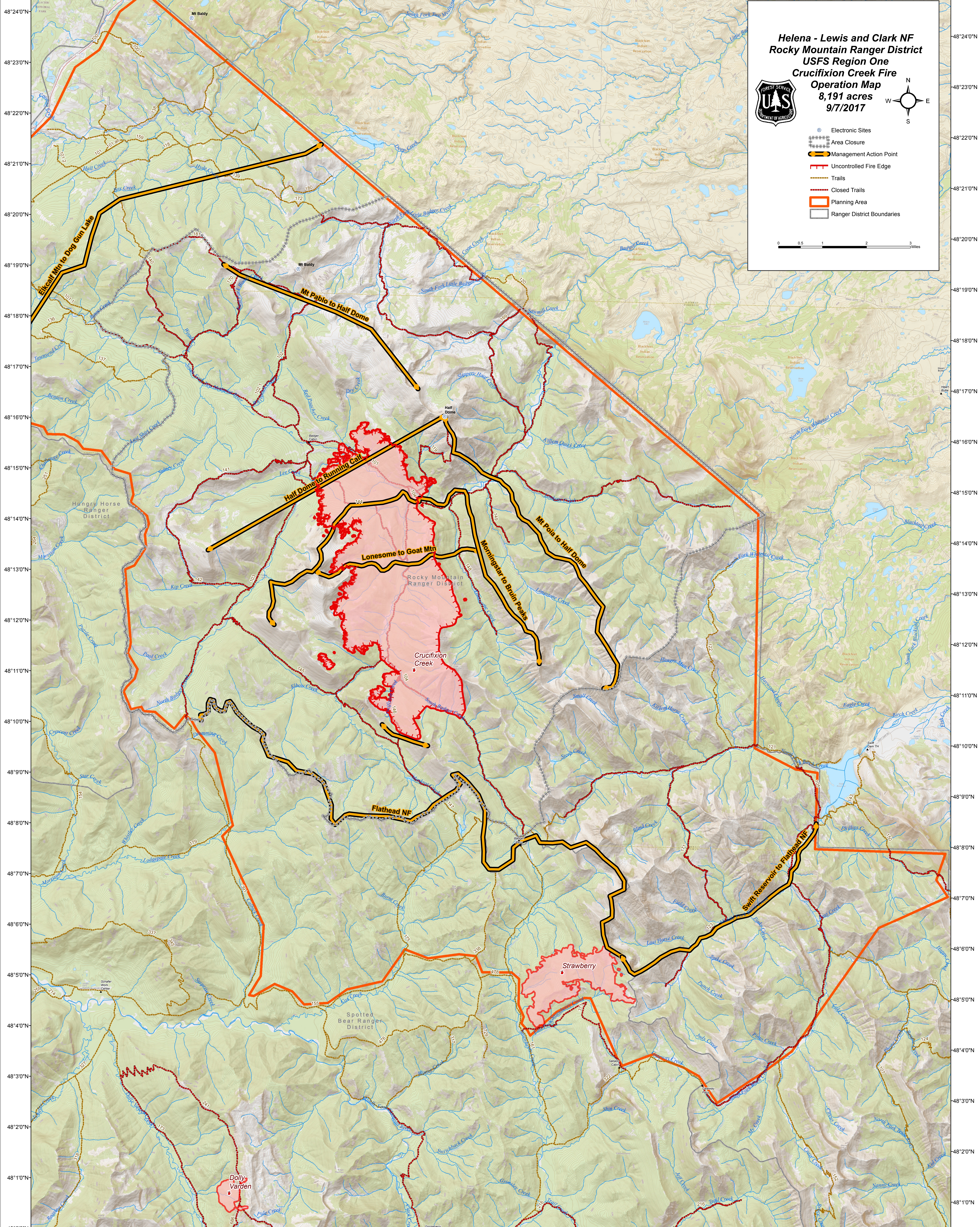
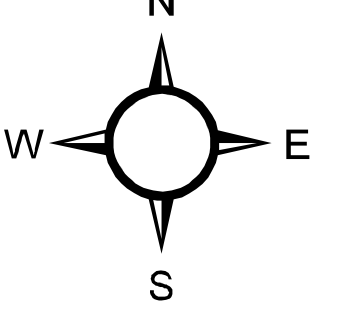



113°17'0"W 113°16'0"W 113°15'0"W 113°14'0"W 113°13'0"W 113°12'0"W 113°11'0"W 113°10'0"W 113°9'0"W 113°8'0"W 113°7'0"W 113°6'0"W 113°5'0"W 113°4'0"W 113°3'0"W 113°2'0"W 113°1'0"W 113°0'0"W 112°59'0"W 112°58'0"W 112°57'0"W 112°56'0"W 112°55'0"W 112°54'0"W 112°53'0"W 112°52'0"W 112°51'0"W



Helena - Lewis and Clark NF
Rocky Mountain Ranger District
USFS Region One
Crucifixion Creek Fire
Operation Map
8,191 acres
9/7/2017



- Electronic Sites
- Area Closure
- Management Action Point
- Uncontrolled Fire Edge
- Trails
- Closed Trails
- Planning Area
- Ranger District Boundaries

0 0.5 1 2 3 Miles

113°16'0"W 113°15'0"W 113°14'0"W 113°13'0"W 113°12'0"W 113°11'0"W 113°10'0"W 113°9'0"W 113°8'0"W 113°7'0"W 113°6'0"W 113°5'0"W 113°4'0"W 113°3'0"W 113°2'0"W 113°1'0"W 113°0'0"W 112°59'0"W 112°58'0"W 112°57'0"W 112°56'0"W 112°55'0"W 112°54'0"W 112°53'0"W 112°52'0"W 112°51'0"W 112°50'0"W