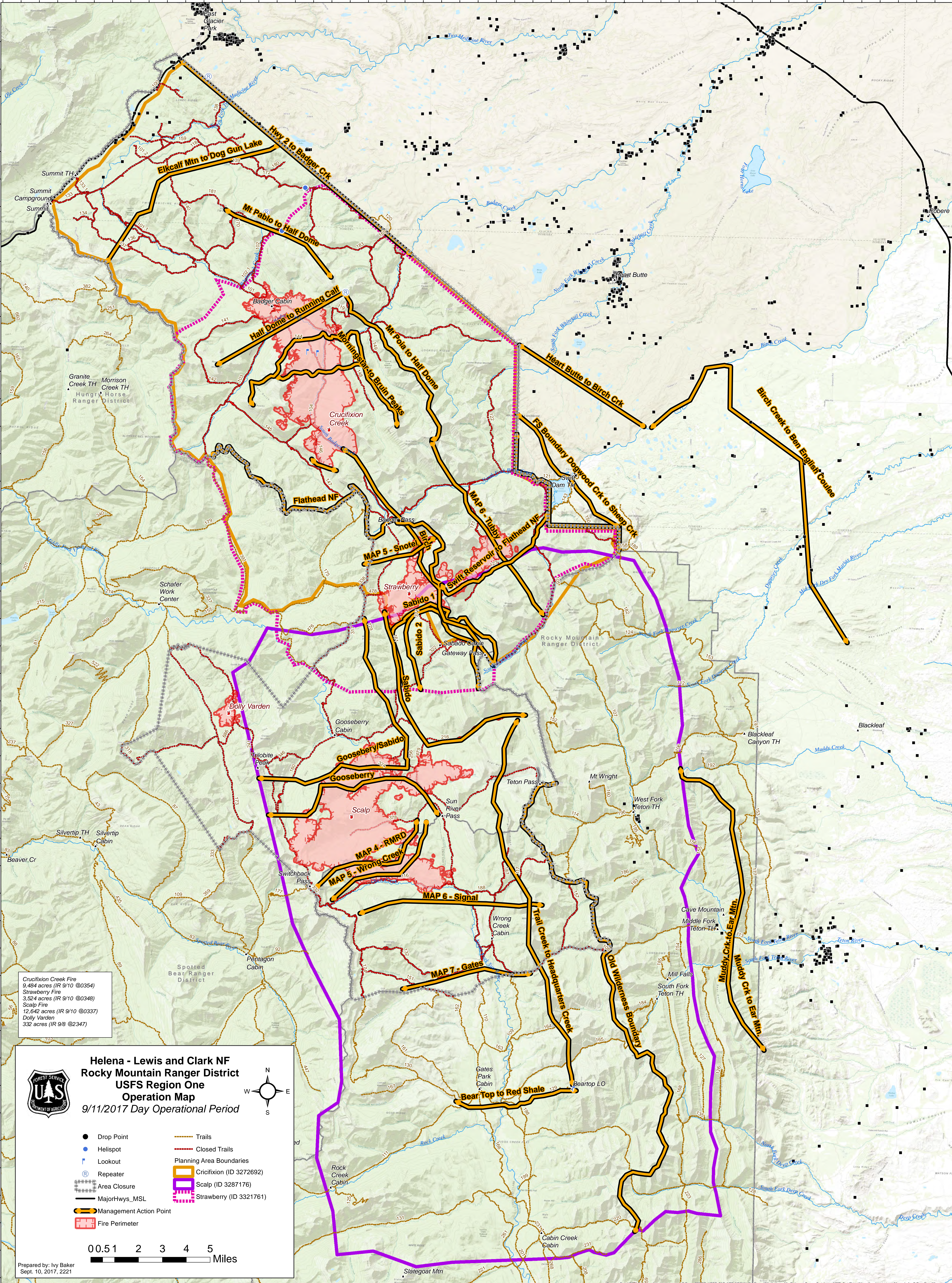


113°23'0"W 113°21'0"W 113°19'0"W 113°17'0"W 113°15'0"W 113°13'0"W 113°11'0"W 113°9'0"W 113°7'0"W 113°5'0"W 113°3'0"W 113°1'0"W 112°59'0"W 112°57'0"W 112°55'0"W 112°53'0"W 112°51'0"W 112°49'0"W 112°47'0"W 112°45'0"W 112°43'0"W 112°41'0"W 112°39'0"W 112°37'0"W 112°35'0"W 112°33'0"W


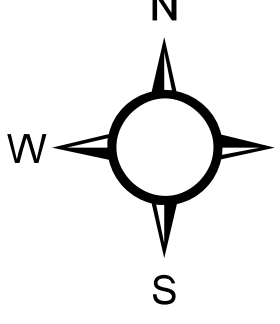


48°26'0"N 48°25'0"N 48°24'0"N 48°23'0"N 48°22'0"N 48°21'0"N 48°20'0"N 48°19'0"N 48°18'0"N 48°17'0"N 48°16'0"N 48°15'0"N 48°14'0"N 48°13'0"N 48°12'0"N 48°11'0"N 48°10'0"N 48°9'0"N 48°8'0"N 48°7'0"N 48°6'0"N 48°5'0"N 48°4'0"N 48°3'0"N 48°2'0"N 48°1'0"N 47°59'0"N 47°58'0"N 47°57'0"N 47°56'0"N 47°55'0"N 47°54'0"N 47°53'0"N 47°52'0"N 47°51'0"N 47°50'0"N 47°49'0"N 47°48'0"N 47°47'0"N 47°46'0"N 47°45'0"N 47°44'0"N 47°43'0"N 47°42'0"N 47°41'0"N 47°40'0"N

48°27'0"N 48°26'0"N 48°25'0"N 48°24'0"N 48°23'0"N 48°22'0"N 48°21'0"N 48°20'0"N 48°19'0"N 48°18'0"N 48°17'0"N 48°16'0"N 48°15'0"N 48°14'0"N 48°13'0"N 48°12'0"N 48°11'0"N 48°10'0"N 48°9'0"N 48°8'0"N 48°7'0"N 48°6'0"N 48°5'0"N 48°4'0"N 48°3'0"N 48°2'0"N 48°1'0"N 47°59'0"N 47°58'0"N 47°57'0"N 47°56'0"N 47°55'0"N 47°54'0"N 47°53'0"N 47°52'0"N 47°51'0"N 47°50'0"N 47°49'0"N 47°48'0"N 47°47'0"N 47°46'0"N 47°45'0"N 47°44'0"N 47°43'0"N 47°42'0"N 47°41'0"N

Cricifixion Creek Fire  
9,484 acres (IR 9/10 @0354)  
Strawberry Fire  
3,524 acres (IR 9/10 @0348)  
Scalp Fire  
12,642 acres (IR 9/10 @0337)  
Dolly Varden  
332 acres (IR 9/8 @2347)

**Helena - Lewis and Clark NF**  
**Rocky Mountain Ranger District**  
**USFS Region One**  
**Operation Map**  
**9/11/2017 Day Operational Period**

- Drop Point
- Helispot
- ⚡ Lookout
- Ⓜ Repeater
- ⊘ Area Closure
- MajorHwys\_MSL
- ➡ Management Action Point
- 🔥 Fire Perimeter
- Trails
- Closed Trails
- Planning Area Boundaries
- Cricifixion (ID 3272692)
- Scalp (ID 3287176)
- Strawberry (ID 3321761)

0 0.5 1 2 3 4 5 Miles

Prepared by: Ivy Baker  
Sept. 10, 2017, 2221

113°21'0"W 113°19'0"W 113°17'0"W 113°15'0"W 113°13'0"W 113°11'0"W 113°9'0"W 113°7'0"W 113°5'0"W 113°3'0"W 113°1'0"W 112°59'0"W 112°57'0"W 112°55'0"W 112°53'0"W 112°51'0"W 112°49'0"W 112°47'0"W 112°45'0"W 112°43'0"W 112°41'0"W 112°39'0"W 112°37'0"W 112°35'0"W 112°33'0"W 112°31'0"W