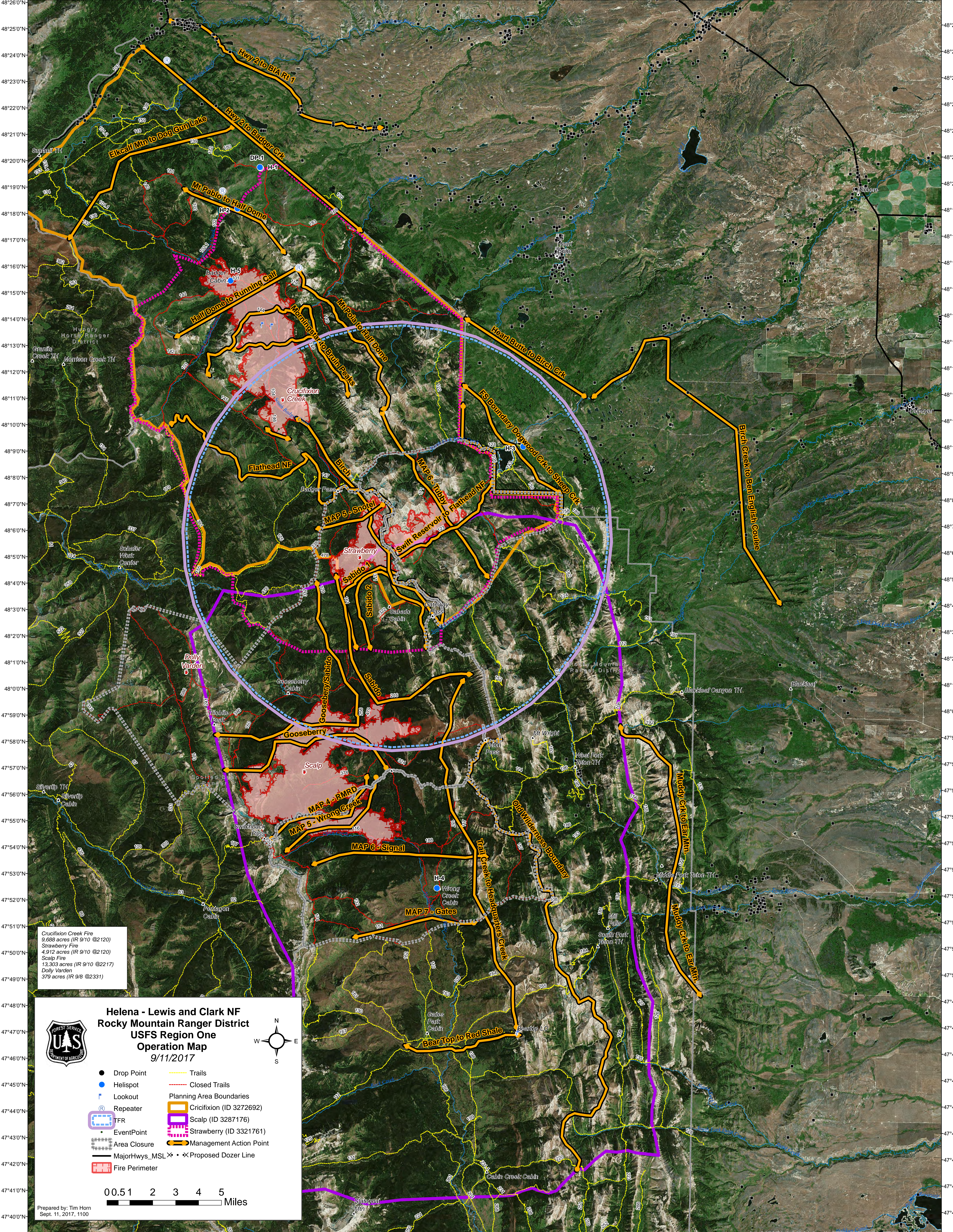


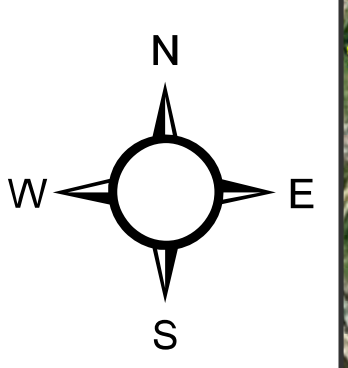
113°19'0"W 113°17'0"W 113°15'0"W 113°13'0"W 113°11'0"W 113°9'0"W 113°7'0"W 113°5'0"W 113°3'0"W 113°1'0"W 112°59'0"W 112°57'0"W 112°55'0"W 112°53'0"W 112°51'0"W 112°49'0"W 112°47'0"W 112°45'0"W 112°43'0"W 112°41'0"W 112°39'0"W 112°37'0"W 112°35'0"W 112°33'0"W 112°31'0"W 112°29'0"W



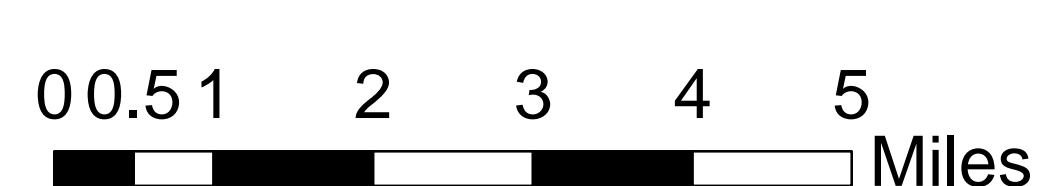
Crucifixion Creek Fire
9,888 acres (IR 9/10 @2120)
Strawberry Fire
4,912 acres (IR 9/10 @2120)
Scalp Fire
13,303 acres (IR 9/10 @2217)
Dolly Varden
379 acres (IR 9/8 @2331)



Helena - Lewis and Clark NF Rocky Mountain Ranger District USFS Region One Operation Map 9/11/2017



- Drop Point
- Helispot
- ⚡ Lookout
- Ⓜ Repeater
- Ⓜ TFR
- Ⓜ Event Point
- Ⓜ Area Closure
- Ⓜ Major Hwys_MSL
- Ⓜ Fire Perimeter
- Trails
- Closed Trails
- Planning Area Boundaries
- Crificixion (ID 3272692)
- Scalp (ID 3287176)
- Strawberry (ID 3321761)
- Management Action Point
- Proposed Dozer Line



Prepared by: Tim Horn
Sept. 11, 2017, 1100

113°17'0"W 113°15'0"W 113°13'0"W 113°11'0"W 113°9'0"W 113°7'0"W 113°5'0"W 113°3'0"W 113°1'0"W 112°59'0"W 112°57'0"W 112°55'0"W 112°53'0"W 112°51'0"W 112°49'0"W 112°47'0"W 112°45'0"W 112°43'0"W 112°41'0"W 112°39'0"W 112°37'0"W 112°35'0"W 112°33'0"W 112°31'0"W 112°29'0"W